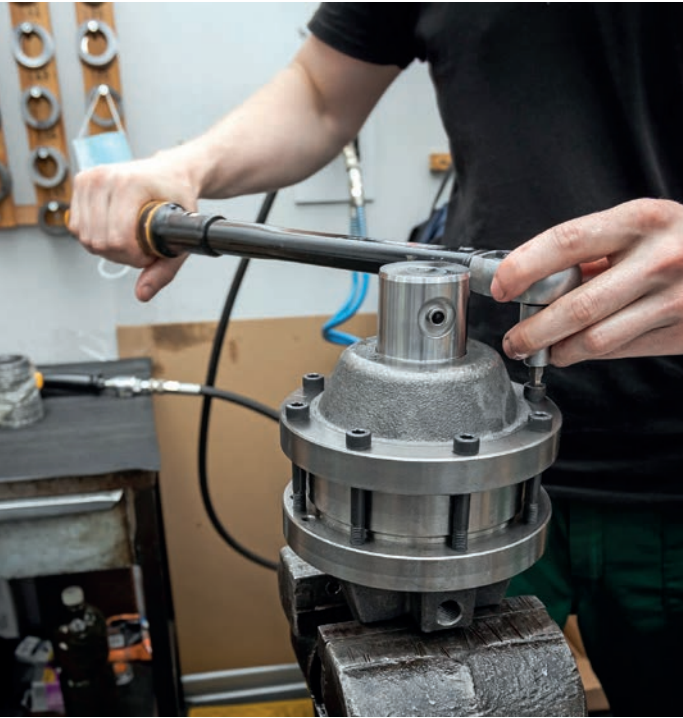


HYDRAULIC ROTATORS

| | |
|----|--|
| 5 | HYDRAULIC 1T ROTATOR Small forestry ATV trailer or paving equipment in the road construction |
| 6 | HYDRAULIC 3T ROTATOR Lighter forestry and agriculture applications |
| 14 | HYDRAULIC 4.5T ROTATOR Medium forestry and agriculture applications |
| 20 | HYDRAULIC 5.5T ROTATOR Forestry and agriculture equipment for higher loads and intensive use |
| 33 | HYDRAULIC 6T ROTATOR Ideal for professional forestry and general cargo handling |
| 48 | HYDRAULIC 10T ROTATOR Heavy forestry and general cargo handling |
| 51 | HYDRAULIC 16T ROTATOR Heavy duty machinery to meet highest demands for quality and reliability |
| 57 | HYDRAULIC 16T HARVESTER Developed for professional and intensive use on harvester heads |
| 58 | LINK FHL 01 WITHOUT BRAKE Compatible from 1T to 5.5T rotators |
| 59 | LINK FHL 01B WITH BRAKE Compatible from 3T to 5.5T rotators |
| 60 | LINK FHL 04 WITHOUT BRAKE Compatible from 3T to 5.5T rotators |
| 62 | LINK FHL 04B WITH BRAKE Compatible from 3T to 5.5T rotators |
| 64 | LINK FHL 05 WITHOUT BRAKE Compatible from 3T to 5.5T rotators |
| 65 | LINK FHL 05B WITH BRAKE Compatible from 3T to 5.5T rotators |
| 66 | LINK FHL 02 WITHOUT BRAKE Compatible from 6T to 10T rotators |
| 67 | LINK FHL 02B WITH BRAKE Compatible from 6T to 10T rotators |
| 68 | LINK FHL 03 WITHOUT BRAKE Compatible from 16T rotators |



SHARE EXPERIENCE

To get a good quality product for affordable price is everyone's daily challenge.

To produce a good quality product and offer it in the market for the best price was a challenge for three highly experienced professionals, who in 2012 decided to attempt a solution for this puzzle.

Leading player in Latvian and Baltic metal trading industry, Ocumachinery and technology dealer in Baltic states and the Latvian pioneer in manufacturing of hydraulic rotators created the platform for experience exchange to achieve the common aim: good quality product for best price. They named it FORMIKO.

The success story of this union was the common knowledge, mind of extremely wide scope and deep understanding of all stages of supply / production / sales.

Understanding how to get the most relevant material with highest quality level for the best price.

Understanding how to process the raw materials and kind of technology to apply for producing the highest quality parts.

Understanding the market demand and correlations to offer the most desired product in right time and right place.

2100 m²
production area

25 CNC
machinery units

Team of **70**
professionals

17 000 m²
leading metal warehouse next door

THE ABILITY TO PRODUCE COST-EFFECTIVE PRODUCT WITH UNCOMPROMISED QUALITY

Our main products are hydraulic rotators for material handling in forestry, agriculture, road and building construction, general cargo and recycling industry

Customizes solutions for our most particular customers.

Engineering support for our customers.

Continuous improvement of existing products.

We confirm the reliability of FHR rotators.

Continuously growing market share

Market share dynamics

| | |
|------|--|
| 2023 | |
| 2022 | |
| 2021 | |
| 2020 | |
| 2019 | |

By following the market demands and our customer requests, we are continuously expanding our offer of hydraulic rotators within the range of

1t–16t load capacity.

On second quarter of 2024 our offer consisted of 53 hydraulic rotator.

Developing strong dealer and distributor network

A lot of energy today is devoted to establish strong worldwide dealer and distributor network to increase the product availability and decrease the delivery time for the end user.

Diversified product range for risk reduction.

Formiko develops and manufactures high quality Jig&Fixtures for CNC machinery producers (e.g. **AMADA**).

Continuous cost reduction by increasing batch and improving production efficiency.

Transfer these savings to our customer through consistent price policy.

Our long-term benefits are increased customer base and increased sales volume due to recommendations and customer shared experience.

| | 1t | 3t | 4.5t | 5t | 6t | 10t | 16t |
|--|-----------------|--|---|--|--|--------------------------------------|---|
| | FHR 1.000L | FHR 3L FHR 3LH FHR 3SF FHR 3SFH FHR 3RF-01 FHR 3FL FHR 3FL4 FHR 3FF | FHR 4.5L FHR 4.5LH FHR 4.5SF FHR 4.5SFH FHR 4.5RF FHR 4.5RFH | FHR 4.500L-68 FHR 4.5L-68H FHR 5.500L FHR 5.5LH FHR 5.5LH FHR 5.5LH FHR 5.5L-02 FHR 5.5L-02H FHR 5.5L68H FHR 5.500SF FHR 5.5SFH FHR 5.500F6 FHR 5.5F6H | FHR 6LD1-68 FHR 6LD1-68H FHR 6LD1-69 FHR 6LD1-69H FHR 6LD1-78 FHR 6LD1-78H FHR 6FD1 FHR 6FD1H FHR 6LD2-68 FHR 6LD2-78 FHR 6FD2 FHR 6FF2S FHR 6FF2R FHR 6FF2X FHR 6FF4X | FHR 10FD1 FHR 10FD1H FHR 10FD2 | FHR 16FD1 FHR 16FD1H FHR 16FD1-203 FHR 16FD1-203H FHR 16FD1-A8 FHR 16FD1-A8H FHH 16 |
| | 10kN | 30kN | 45kN | 55kN | 60kN | 100kN | 160kN |
| | 350Nm | 900Nm | 1200Nm | 1300Nm | 1850Nm | 2800Nm | 3400Nm |
| | 5kN | 15kN | 25kN | 25kN | 30kN | 50kN | 80kN |
| | 10l/min | 20l/min | 20l/min | 22l/min | 25l/min | 30l/min | 40l/min |
| | | | | | | | |
| | MAX LOAD STATIC | TORQUE at 25MPa | MAX LOAD DYNAMIC | REC. OILFLOW | | | |

ROTATOR **FHR 1.000L**

**STATIC
LOAD**



10 kN

**DYNAMIC
LOAD**



5 kN

**TORQUE
at 25MPa**



350 Nm

OILFLOW



10 l/min

WEIGHT



12 kg

Grapple open

G1/4" Max 200 bar

Rotate left/right

G1/4" Max 250 bar

Rotator frame
L45 ø25

Fast maintenance
greasing nipple

Grapple close
G1/4" Max 300
bar

Resistant
iron hose
guard

Grapple open

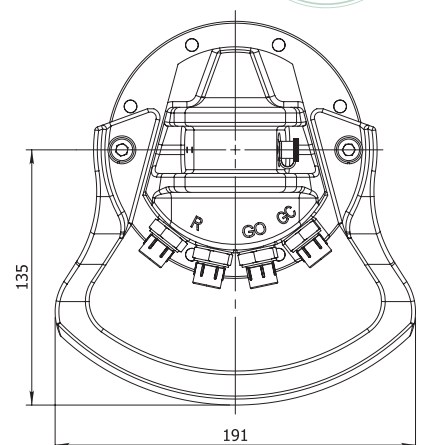
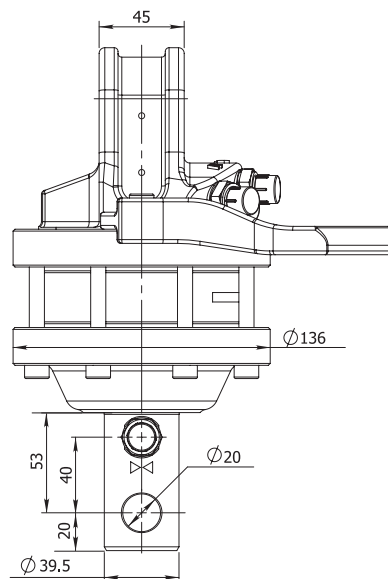
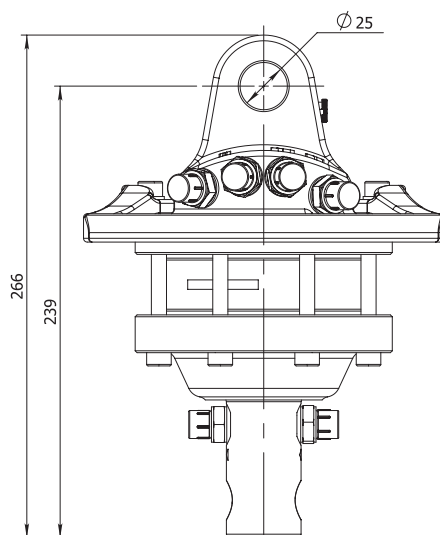
G1/4"

Reliable ø39.5 steel shaft
for fitting the grapple
with ø20 pin

Grapple close

G1/4"

! Formiko Hydraulics
FHR 1.000L is the
smallest rotator com-
monly used with the
forestry ATV trailer or
paving equipment in
the road construction.



FORESTRY



AGRICULTURE



CONSTRUCTION



GENERAL CARGO



RECYCLING



FHR 3L ROTATOR

STATIC LOAD



30 kN

DYNAMIC LOAD



15 kN

TORQUE at 25MPa



900 Nm

OILFLOW



20 l/min

WEIGHT



18 kg

Rotate left/right
G3/8" Max 250 bar

Grapple open
G3/8" Max 200 bar

Rotator frame
L60 ø25

Fast maintenance
greasing nipple

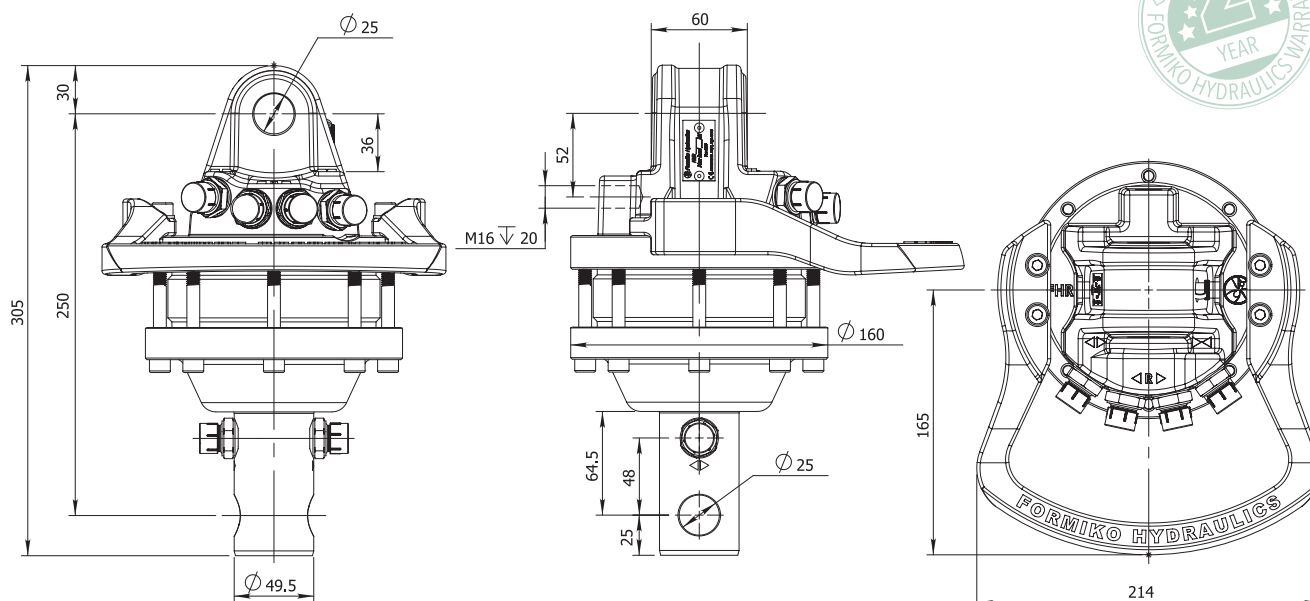
Grapple close
G3/8"
Max 300 bar

Iron 4 point
fitting system
hose guard

Grapple close
G3/8"

Grapple open
G3/8"

Reliable ø49.5 steel
shaft for fitting
the grapple with
ø25 pin



FORESTRY



AGRICULTURE



CONSTRUCTION



GENERAL CARGO



RECYCLING

**STATIC
LOAD**



30 kN

**DYNAMIC
LOAD**



15 kN

**TORQUE
at 25MPa**



900 Nm

OILFLOW



20 l/min

WEIGHT



18 kg

Rotate left/right
G3/8" Max 250 bar
Grapple open
G3/8" Max 200 bar

Rotator frame
L60 ø25

Fast maintenance
greasing nipple

Grapple close

G3/8"
Max 300 bar

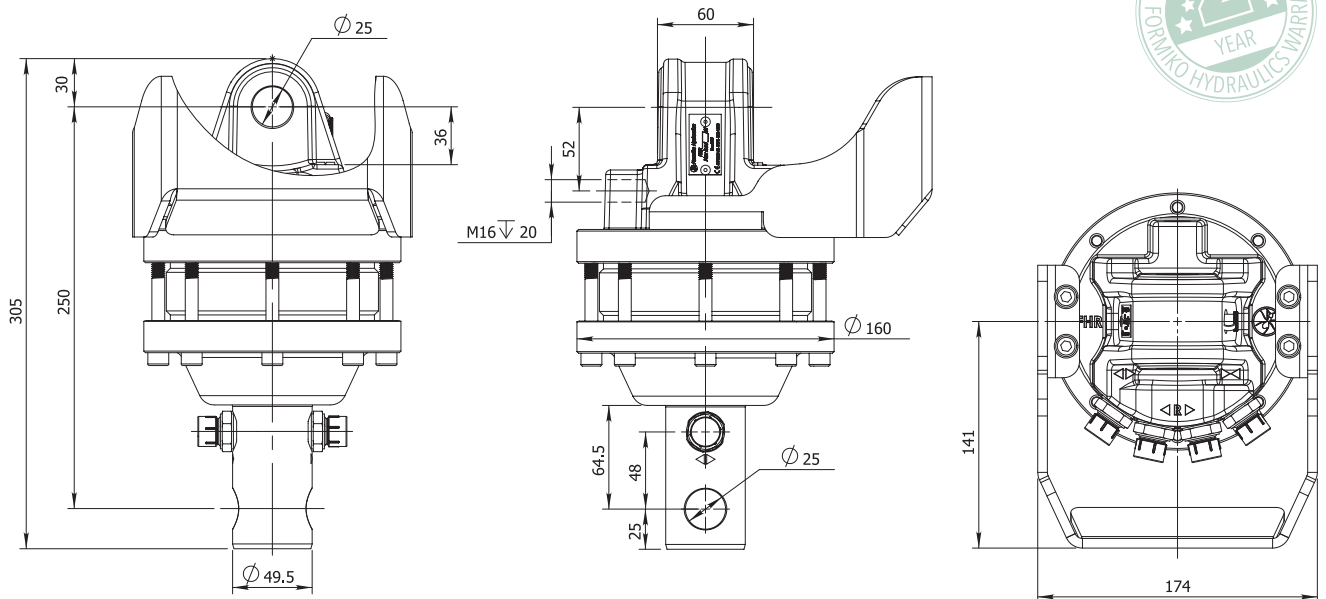
Steel 4 point
fitting system
hose guard

Grapple close

G3/8"

Reliable ø49.5
steel shaft for
fitting the grapple
with ø25 pin

Grapple open
G3/8"



FORESTRY



AGRICULTURE



CONSTRUCTION



GENERAL CARGO



RECYCLING



FHR 3SF

ROTATOR

STATIC
LOAD

30 kN

DYNAMIC
LOAD

15 kN

TORQUE
at 25MPa

900 Nm

OILFLOW

20 l/min

WEIGHT

24 kg



**FORGED
STEEL**

Rotate left/right
G3/8" Max 250 bar

Grapple open
G3/8" Max 200 bar

Rotator frame
L60 ø25

Fast maintenance
greasing nipple

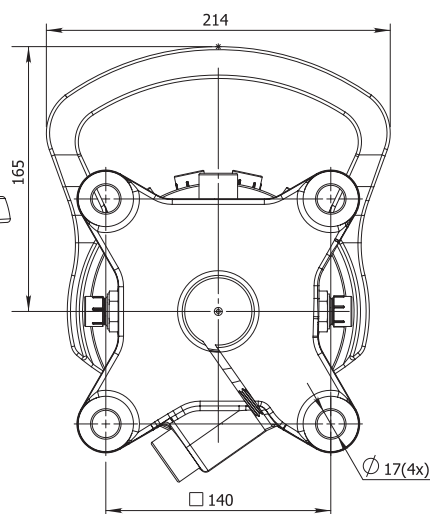
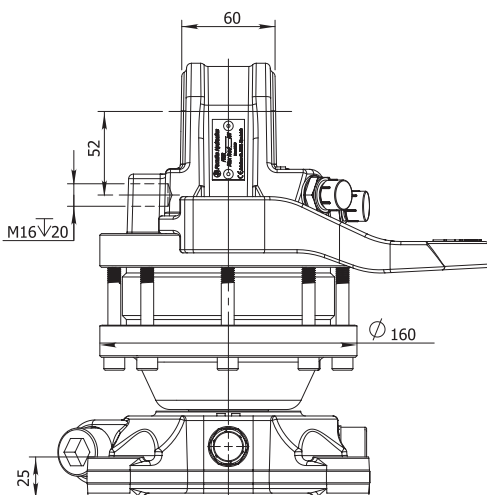
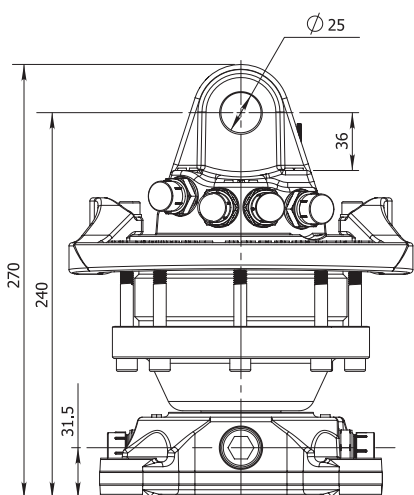
Grapple close
G3/8" Max 300 bar

Iron 4 point
fitting system
hose guard

Grapple open
G3/8"

Grapple close
G3/8"

Shock resistant FORGED
STEEL flange for reliable
fitting the grapple



FORESTRY



AGRICULTURE



CONSTRUCTION



GENERAL CARGO



RECYCLING



**FORGED
STEEL**

Rotate left/right
G3/8" Max 250 bar

Rotator frame
L60 ø25

Fast maintenance
greasing nipple

Grapple close
G3/8" Max 300 bar

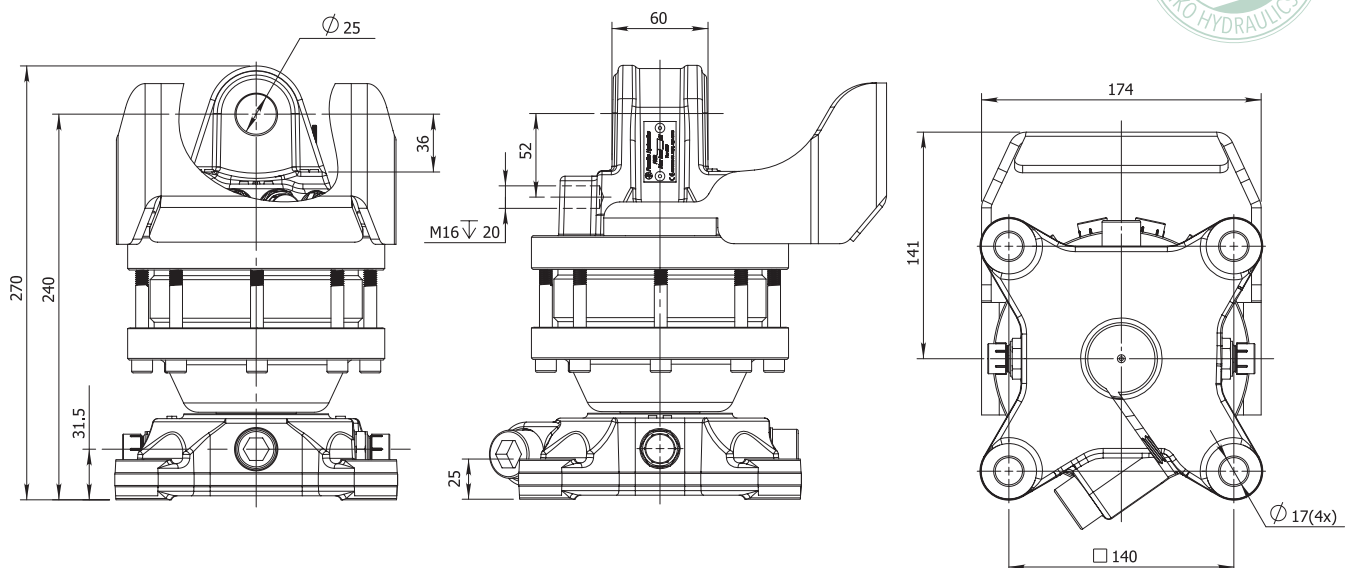
Steel 4
point fitting
system hose
guard

Grapple open
G3/8" Max 200 bar

Grapple open
G3/8"

Grapple close
G3/8"

Shock resistant FORGED
STEEL flange for reliable
fitting the grapple



FORESTRY



AGRICULTURE



CONSTRUCTION



GENERAL CARGO



RECYCLING



30 kN

15 kN

900 Nm

20 l/min

22 kg



Grapple open
G3/8" Max 200 bar

Fast maintenance greasing nipple

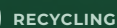
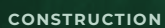
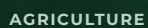
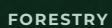
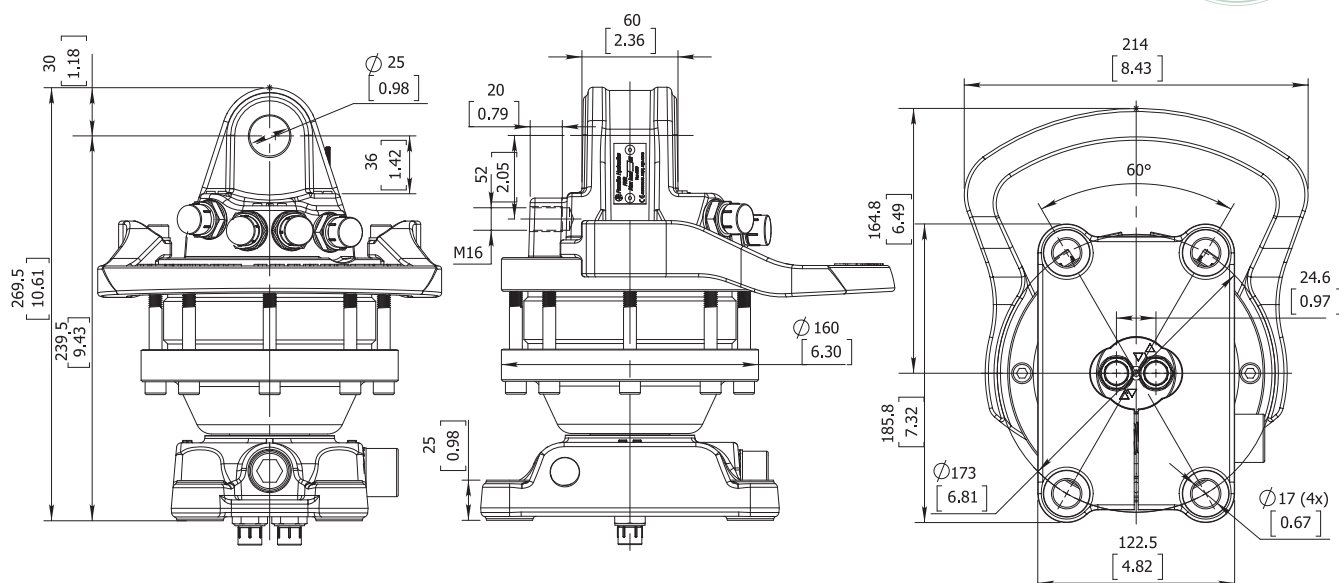
G3/8"
Max 300 bar

Iron 4 point
fitting system
hose guard

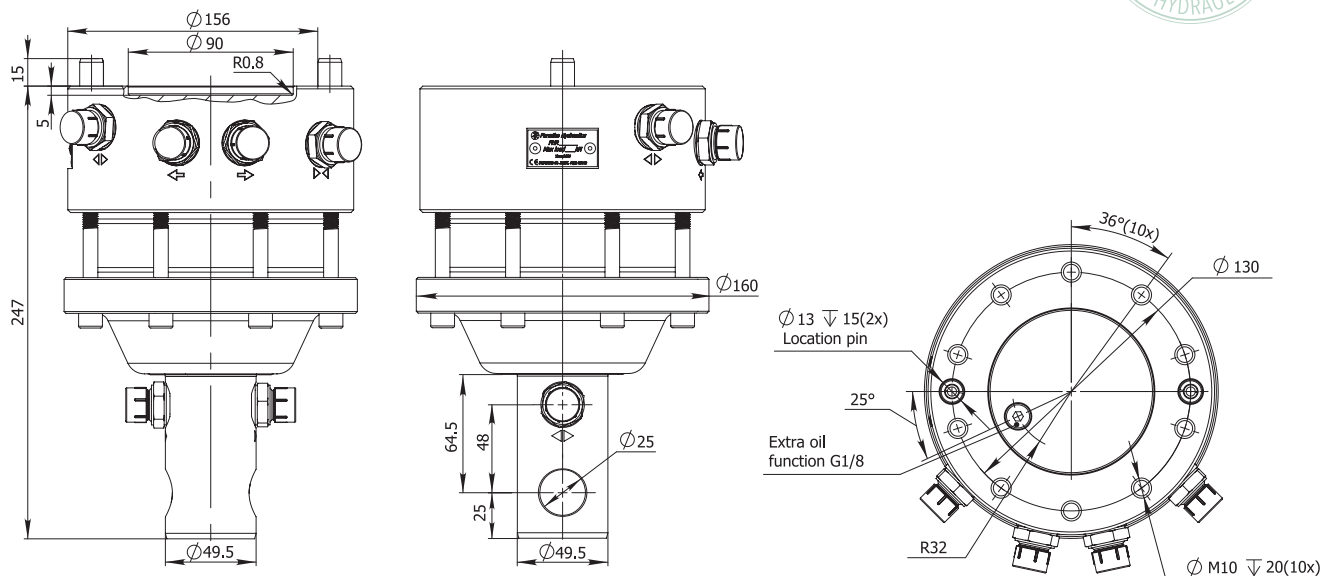
Grapple open

G1/4"

Grapple close
G1/4"



ROTATOR FHR 3FL



FORESTRY



AGRICULTURE



CONSTRUCTION



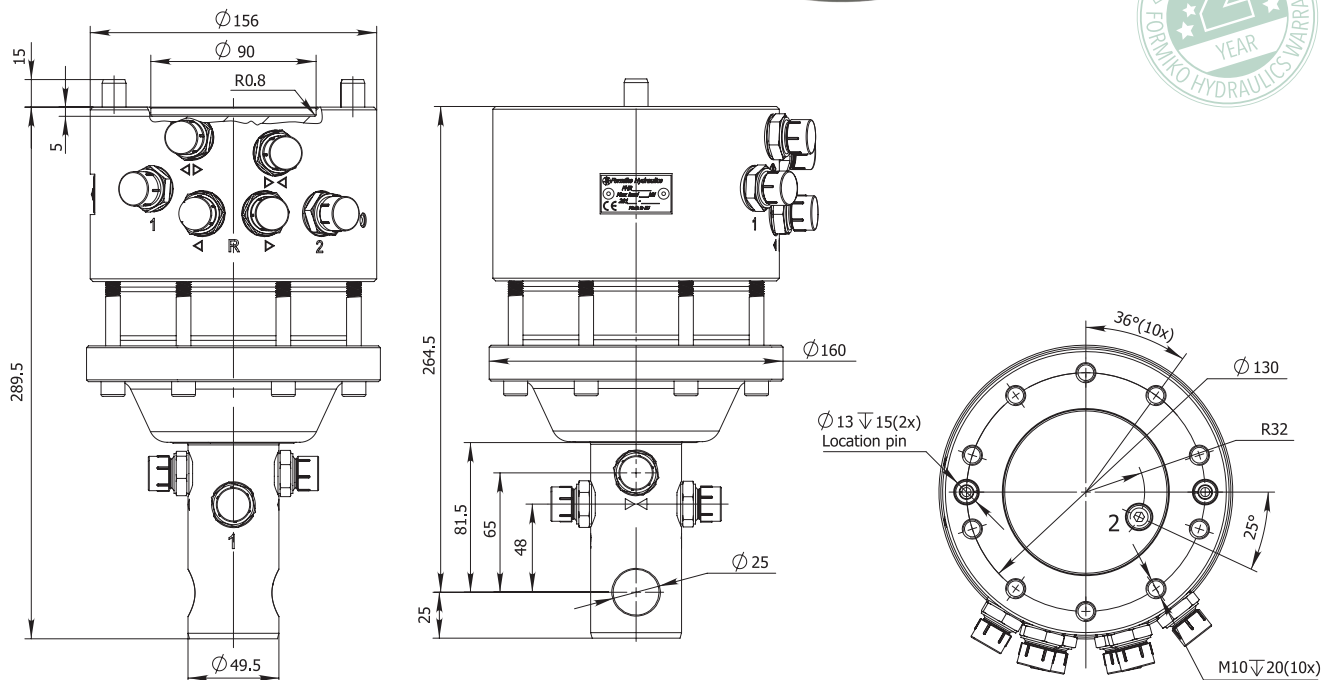
GENERAL CARGO



RECYCLING



FHR 3FL4 ROTATOR



FORESTRY



AGRICULTURE



CONSTRUCTION

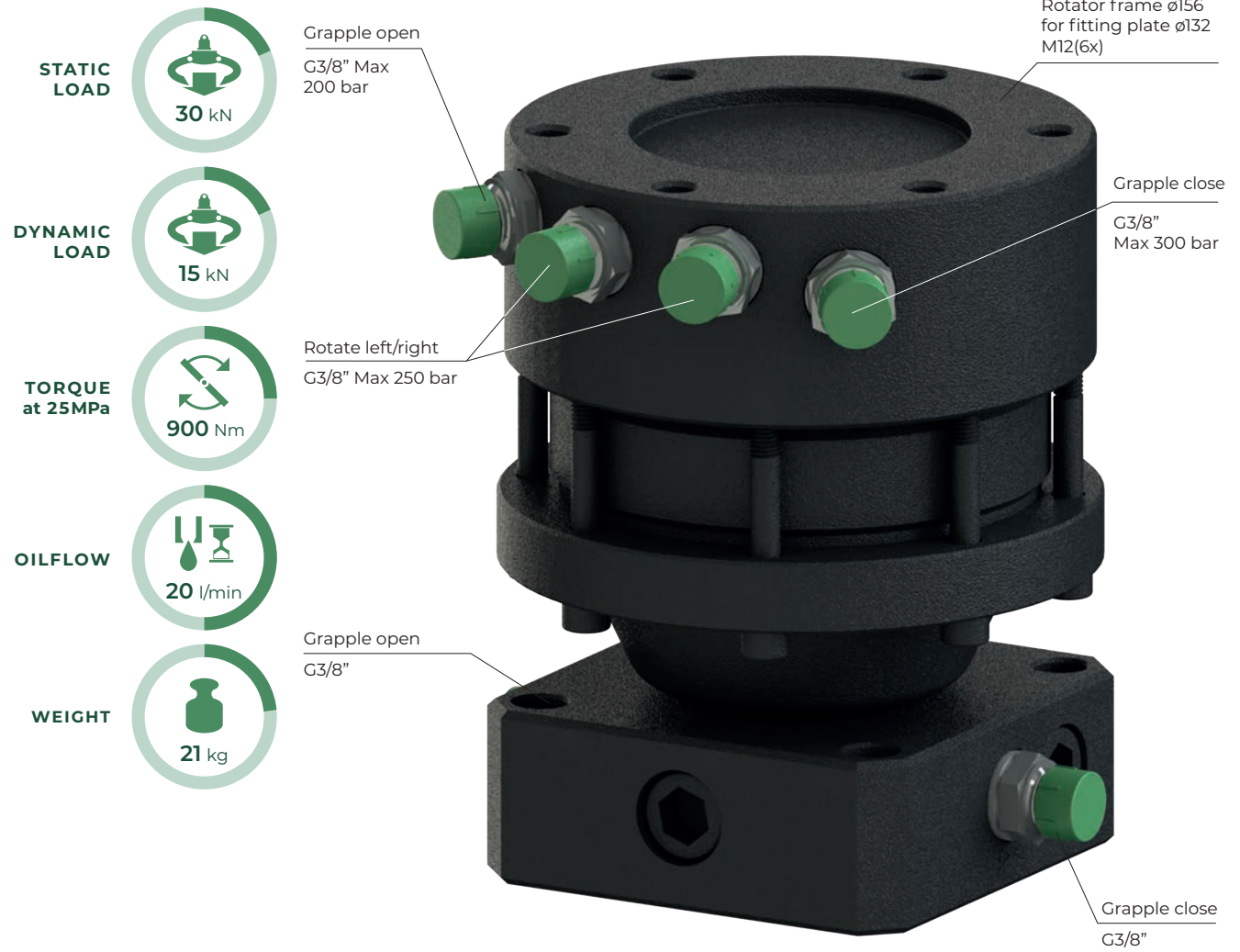


GENERAL CARGO



RECYCLING

ROTATOR FHR 3FF



**STATIC
LOAD**



30 kN

**DYNAMIC
LOAD**



15 kN

**TORQUE
at 25MPa**



900 Nm

OILFLOW

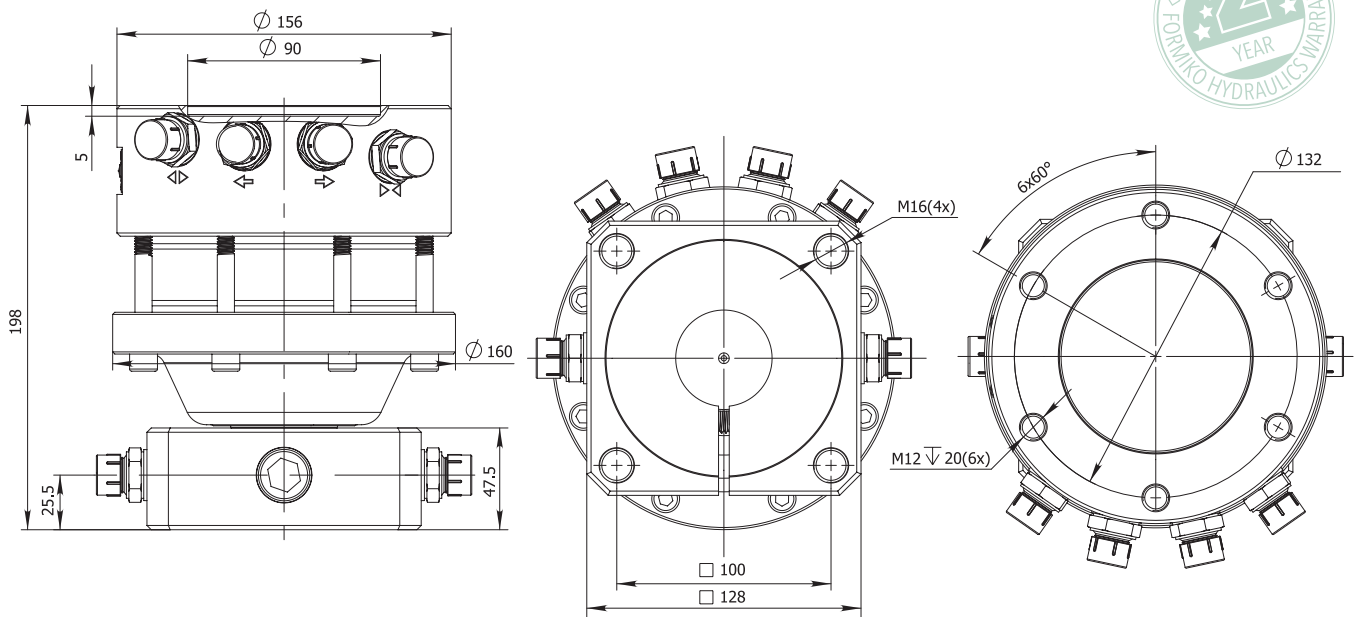


20 l/min

WEIGHT



21 kg



FORESTRY



AGRICULTURE



CONSTRUCTION



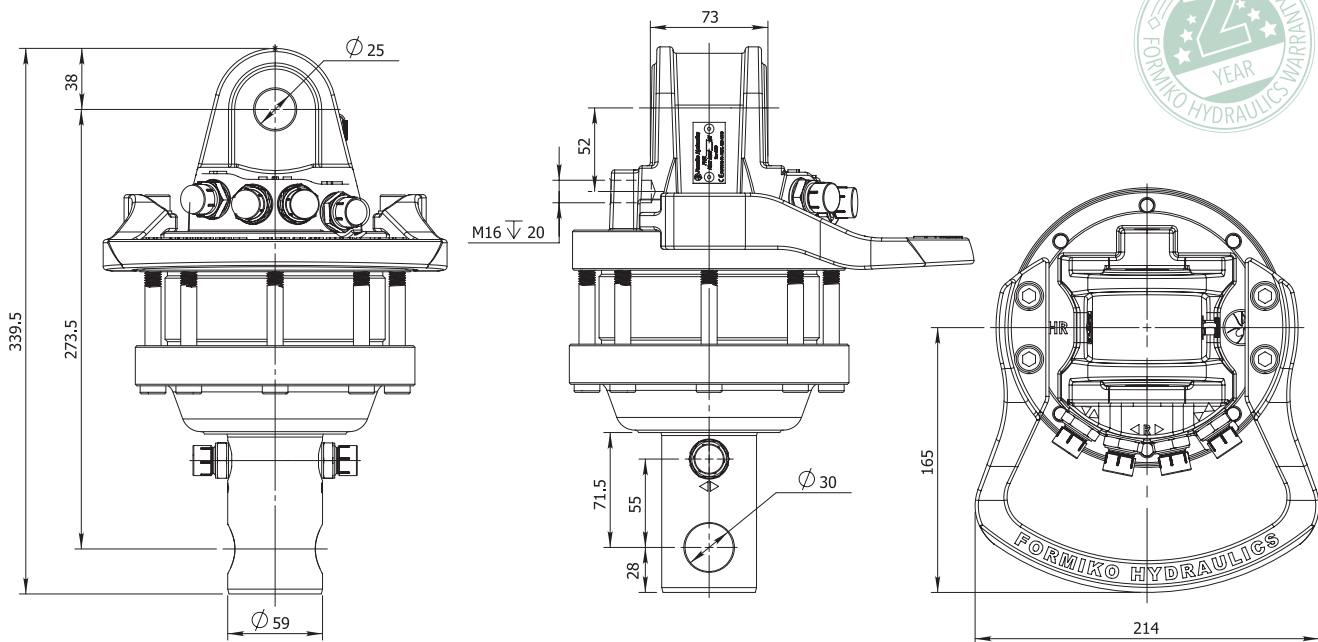
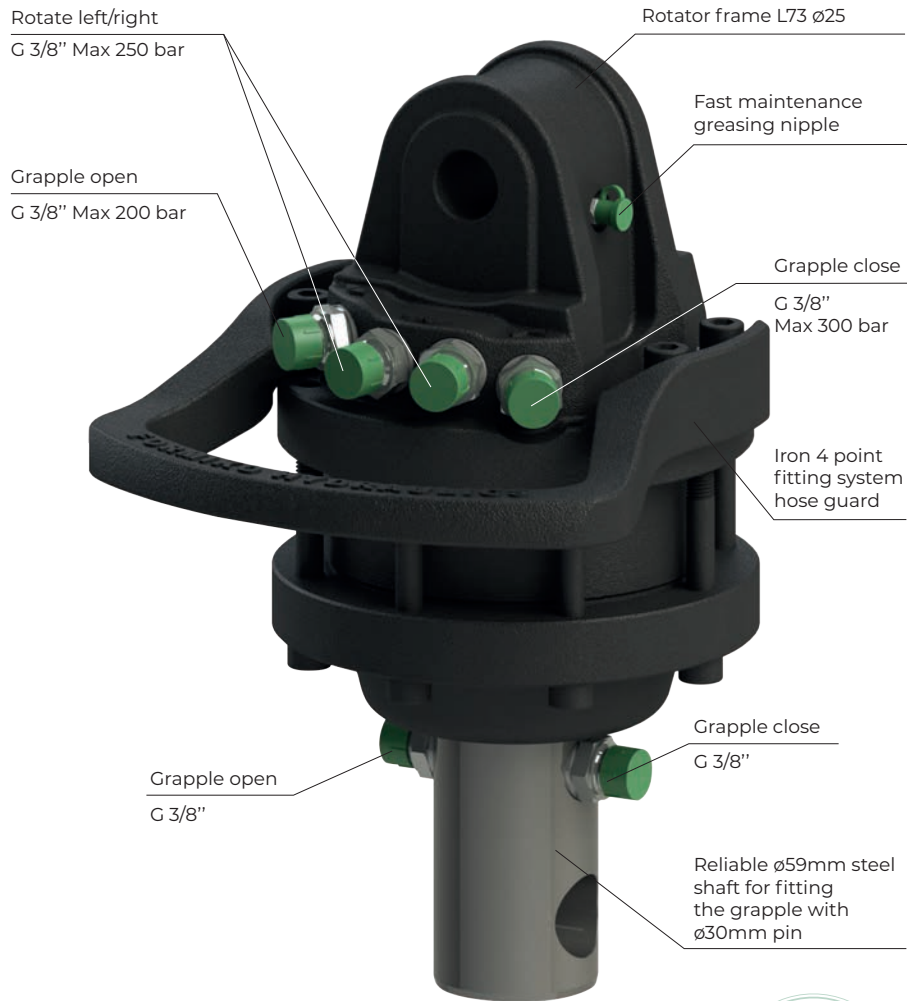
GENERAL CARGO



RECYCLING



FHR 4.5L ROTATOR



ROTATOR FHR 4.5LH

STATIC
LOAD



DYNAMIC
LOAD



TORQUE
at 25MPa



OILFLOW



WEIGHT

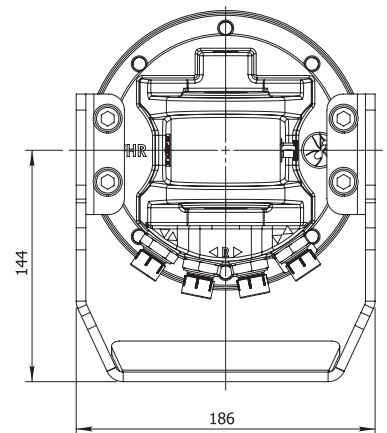
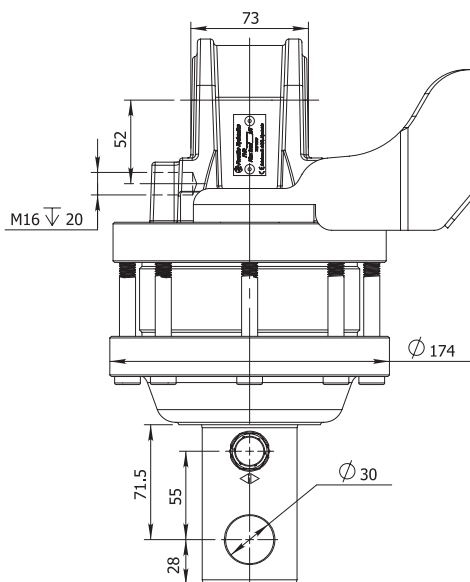
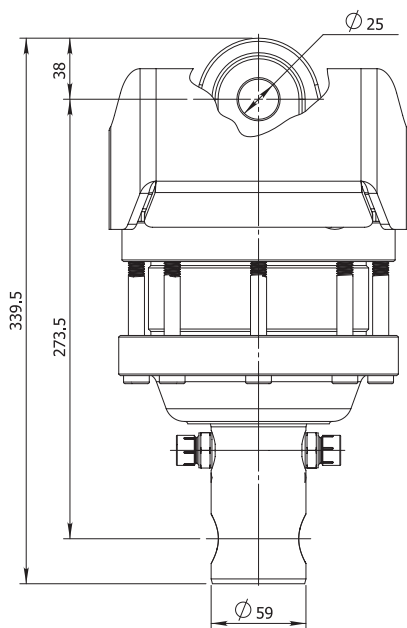
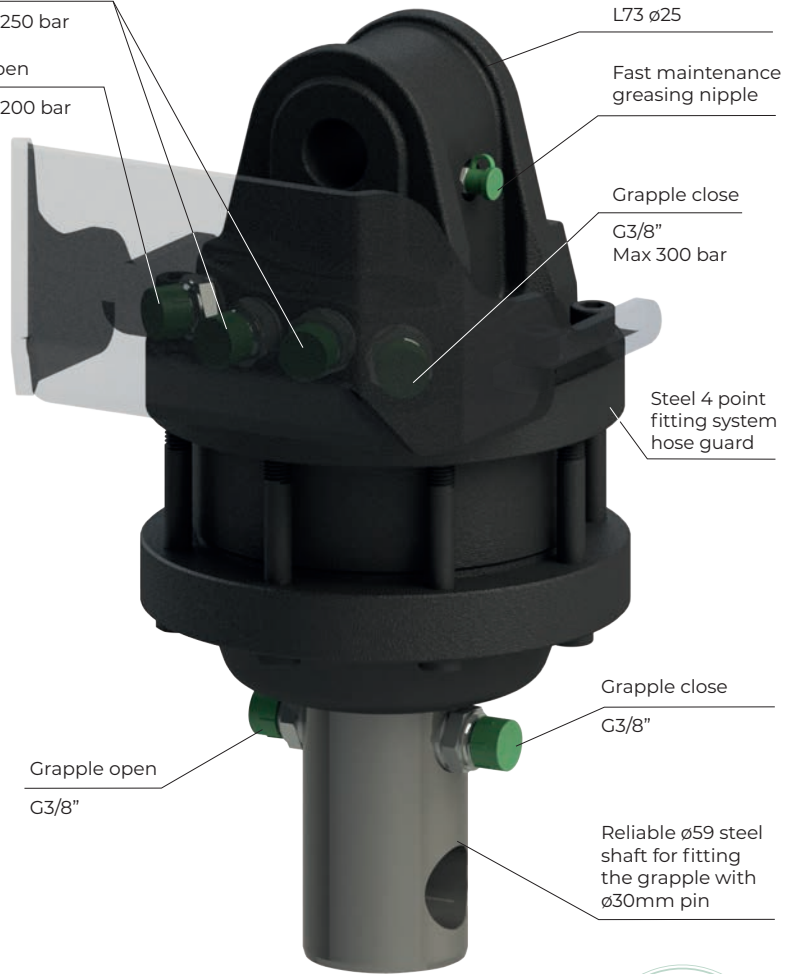


Rotate left/right
G3/8" Max 250 bar
Grapple open
G3/8" Max 200 bar

Rotator frame
L73 ø25
Fast maintenance
greasing nipple

Grapple close
G3/8"
Max 300 bar

Steel 4 point
fitting system
hose guard



FORESTRY



AGRICULTURE



CONSTRUCTION



GENERAL CARGO



RECYCLING



FHR 4.5SF ROTATOR

STATIC
LOAD



45 kN

DYNAMIC
LOAD



25 kN

TORQUE
at 25MPa



1200 Nm

OILFLOW



20 l/min

WEIGHT



29 kg



**FORGED
STEEL**

Rotate left/right

G3/8" Max 250 bar

Grapple open

G3/8" Max 200 bar

Rotator frame
L73 ø25

Fast maintenance
greasing nipple

Grapple close

G3/8"
Max 300 bar

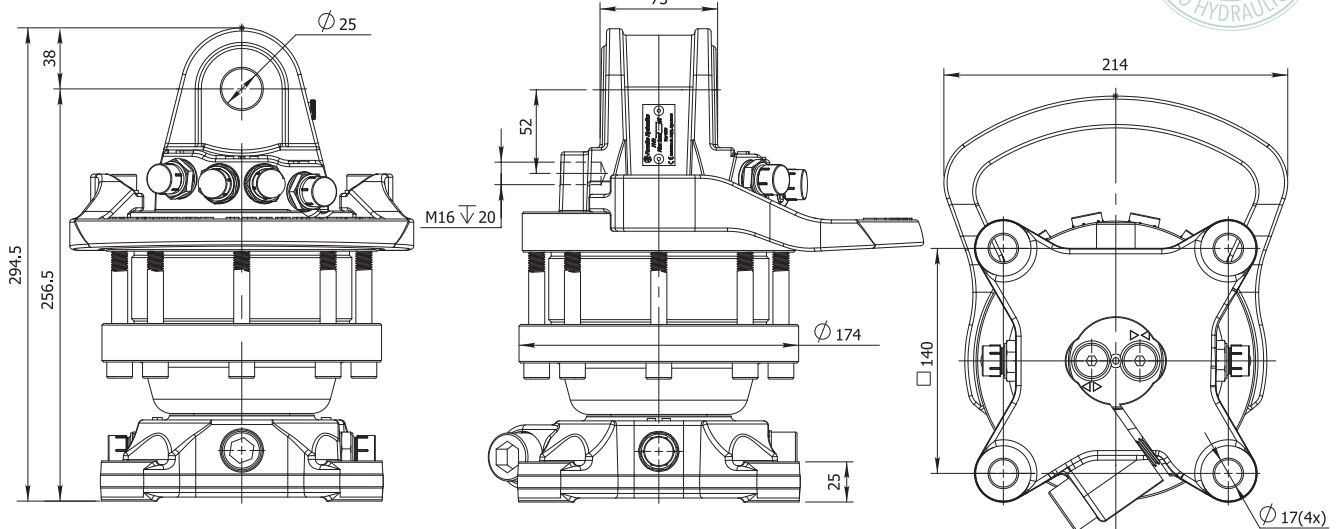
Iron 4 point
fitting system
hose guard

Grapple open
G3/8"

Grapple close
G3/8"

Optional open/close
channels

Shock resistant FORGED
STEEL flange for reliable
fitting the grapple



FORESTRY



AGRICULTURE



CONSTRUCTION



GENERAL CARGO



RECYCLING

ROTATOR FHR 4.5SFH

STATIC
LOAD



DYNAMIC
LOAD



TORQUE
at 25MPa



OILFLOW



WEIGHT



**FORGED
STEEL**

Rotate left/right
G3/8" Max 250 bar

Rotator frame
L73 ø25

Fast maintenance
greasing nipple

Grapple close
G3/8" Max 300 bar

Grapple open
G3/8" Max 200 bar

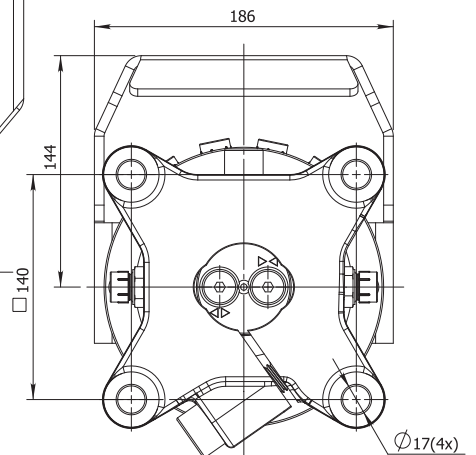
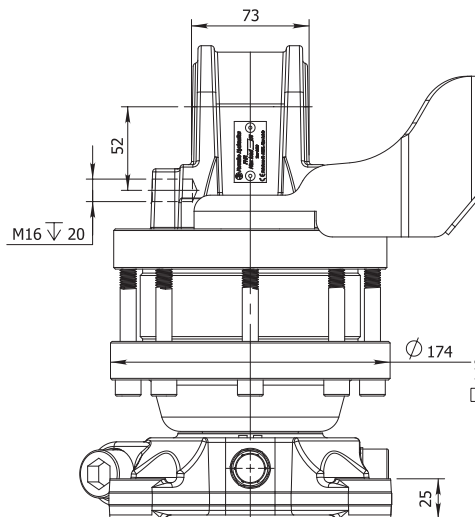
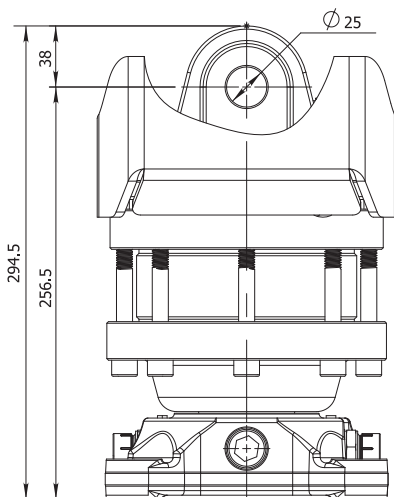
Steel
4 point fitting
system hose
guard

Grapple open
G3/8"

Grapple
close
G3/8"

Optional open/close
channels

Shock resistant FORGED
STEEL flange for reliable
fitting the grapple



FORESTRY



AGRICULTURE



CONSTRUCTION



GENERAL CARGO



RECYCLING



FHR 4.5RF ROTATOR

STATIC
LOAD



45 kN

DYNAMIC
LOAD



25 kN

TORQUE
at 25MPa



1200 Nm

OILFLOW



20 l/min

WEIGHT



28 kg



**FORGED
STEEL**

Rotate left/right
G3/8" Max 250 bar

Grapple open
G3/8" Max 200 bar

Rotator frame
L73 ø25

Fast maintenance
greasing nipple

Grapple close
G3/8"
Max 300 bar

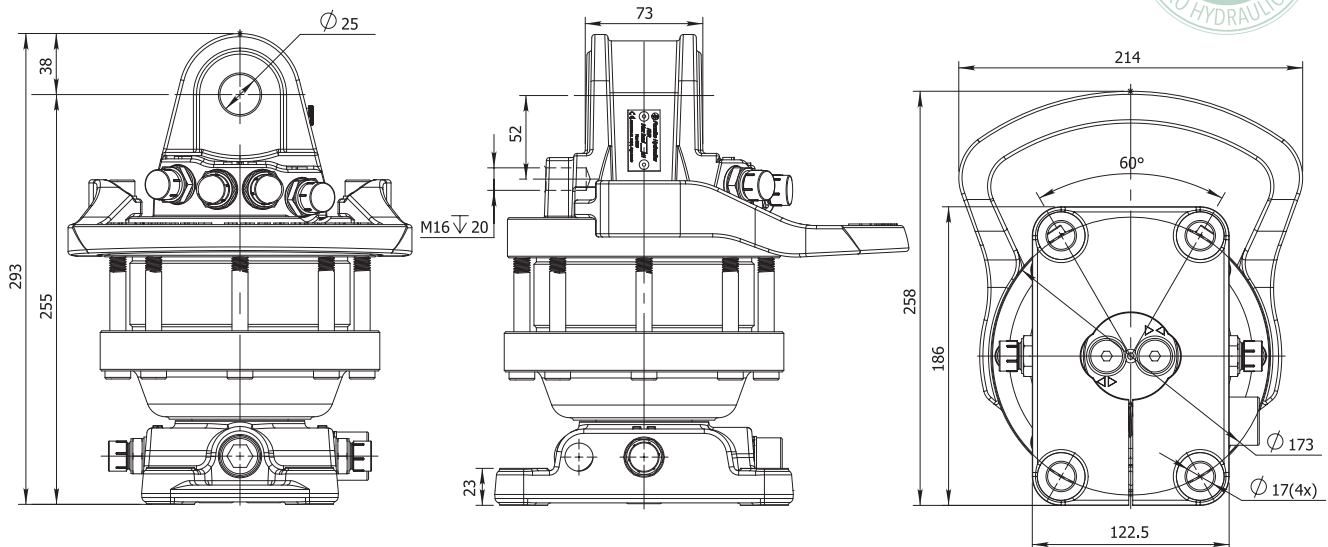
Iron 4 point
fitting system
hose guard

Grapple open
G3/8"

Grapple close
G3/8"

Optional open/close
channels

Shock resistant FORGED
STEEL flange for reliable
fitting the grapple



FORESTRY



AGRICULTURE



CONSTRUCTION



GENERAL CARGO



RECYCLING

STATIC
LOAD



DYNAMIC
LOAD



TORQUE
at 25MPa



OILFLOW



WEIGHT



**FORGED
STEEL**

Rotate left/right
G3/8" Max 250 bar

Rotator frame
L73 ø25

Fast maintenance
greasing nipple

Grapple close
G3/8" Max 300 bar

Grapple open
G3/8" Max 200 bar

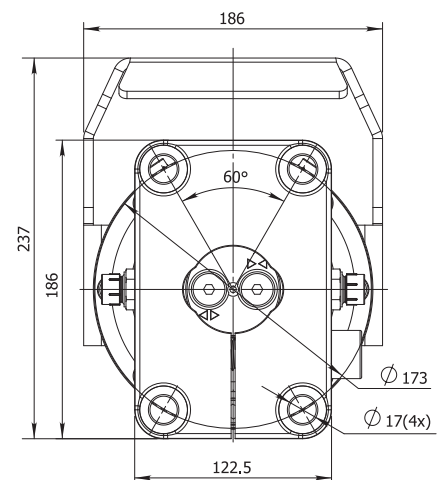
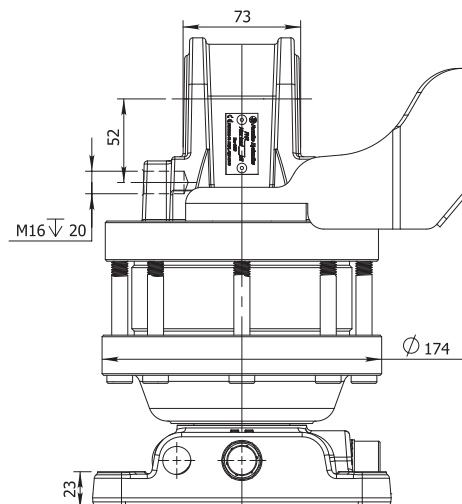
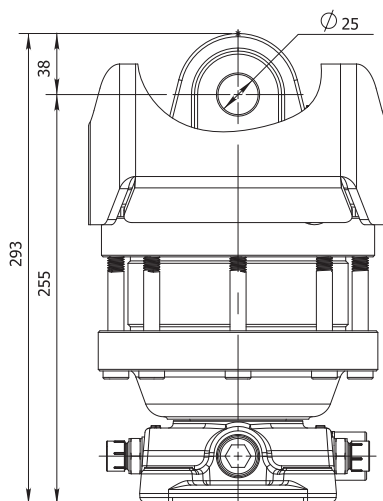
Steel 4 point
fitting system
hose guard

Grapple open
G3/8"

Grapple close
G3/8"

Optional open/close
channels

Shock resistant
FORGED STEEL
flange for reliable
fitting the grapple



FORESTRY



AGRICULTURE



CONSTRUCTION



GENERAL CARGO



RECYCLING



FHR 4.500L-68 ROTATOR

STATIC LOAD

55 kN

DYNAMIC LOAD

25 kN

TORQUE at 25MPa

1300 Nm

OILFLOW

22 l/min

WEIGHT

28 kg

Rotate left/right

G 3/8" Max 250 bar

Grapple open

G 3/8" Max 200 bar

Rotator frame L73 Ø25

Fast maintenance greasing nipple

Grapple close

G 3/8" Max 300 bar

Iron 4 point fitting system hose guard

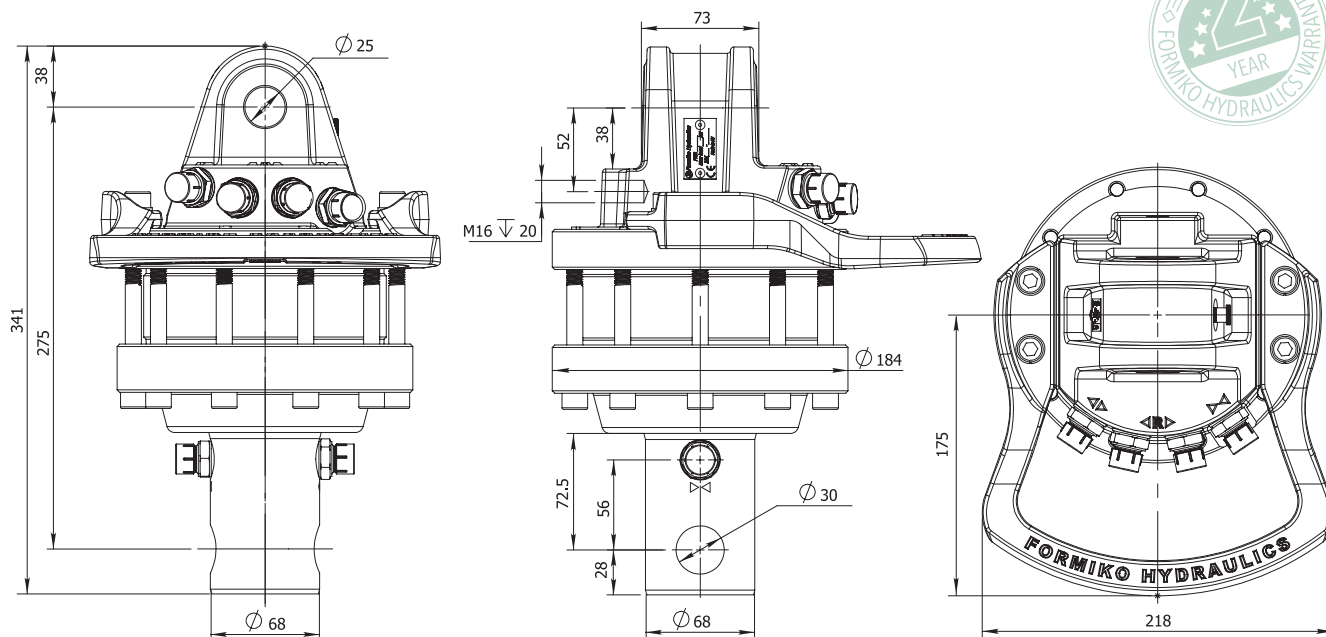
Grapple close

G 3/8"

Grapple open

G 3/8"

Reliable Ø68mm steel shaft for fitting the grapple with Ø30mm pin



FORESTRY



AGRICULTURE



CONSTRUCTION



GENERAL CARGO



RECYCLING

STATIC
LOAD



DYNAMIC
LOAD



TORQUE
at 25MPa



OILFLOW



WEIGHT



Rotate left/right

G3/8" Max 250 bar

Grapple open

G3/8" Max 200 bar

Rotator frame
L73 ø25

Fast maintenance
greasing nipple

Grapple close

G3/8"
Max 300 bar

Steel 4 point
fitting system
hose guard

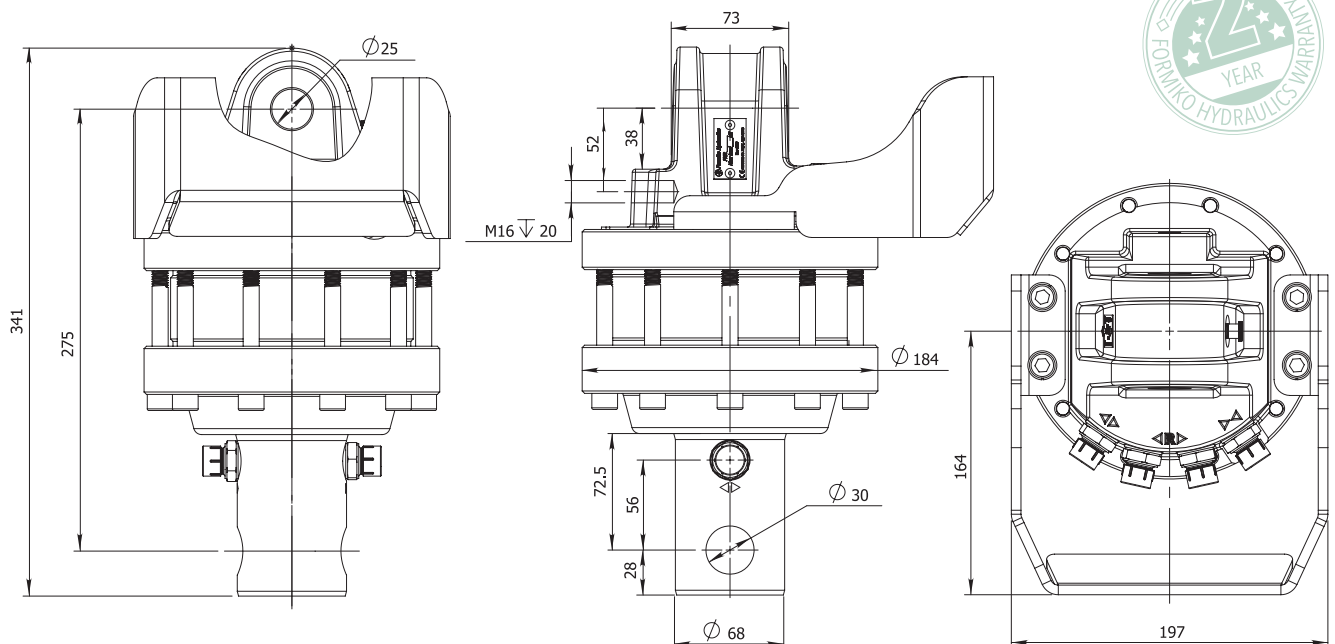
Grapple close

G3/8"

Grapple open

G 3/8"

Reliable ø68 steel shaft
for fitting the
grapple with ø25 pin



FORESTRY



AGRICULTURE



CONSTRUCTION



GENERAL CARGO



RECYCLING



FHR 5.500L ROTATOR

STATIC
LOAD

55 kN

DYNAMIC
LOAD

25 kN

TORQUE
at 25MPa

1300 Nm

OILFLOW

22 l/min

WEIGHT

29 kg

Rotate left/right
G 3/8" Max 250 bar

Grapple open
G 3/8" Max 200 bar

Rotator frame
L73 ø30

Fast maintenance
greasing nipple

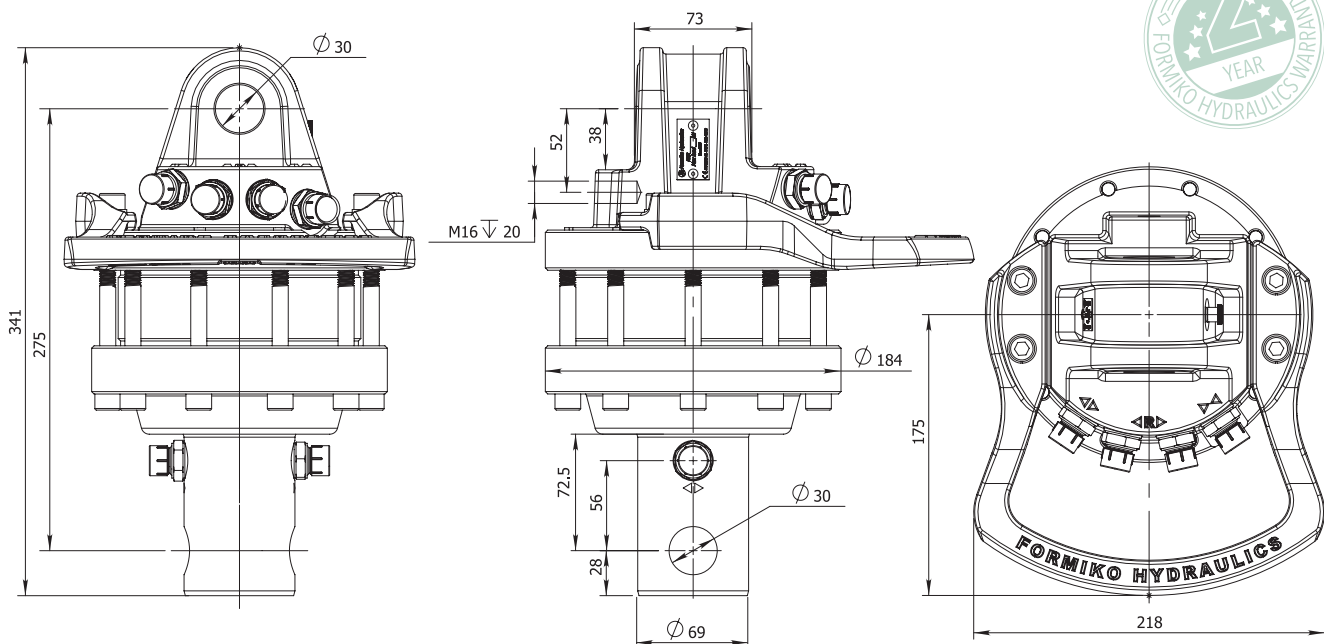
Grapple close
G 3/8"
Max 300 bar

Iron 4 point
fitting system
hose guard

Grapple close
G 3/8"

Grapple open
G 3/8"

Reliable ø69 mm steel
shaft for fitting
the grapple with
ø30mm pin



FORESTRY



AGRICULTURE



CONSTRUCTION



GENERAL CARGO



RECYCLING

ROTATOR FHR 5.5LH

STATIC
LOAD



55 kN

DYNAMIC
LOAD



25 kN

TORQUE
at 25MPa



1300 Nm

OILFLOW



22 l/min

WEIGHT



29 kg

Rotate left/right
G3/8" Max 250 bar

Grapple open
G3/8" Max 200 bar

Rotator frame
L73 ø30

Fast maintenance
greasing nipple

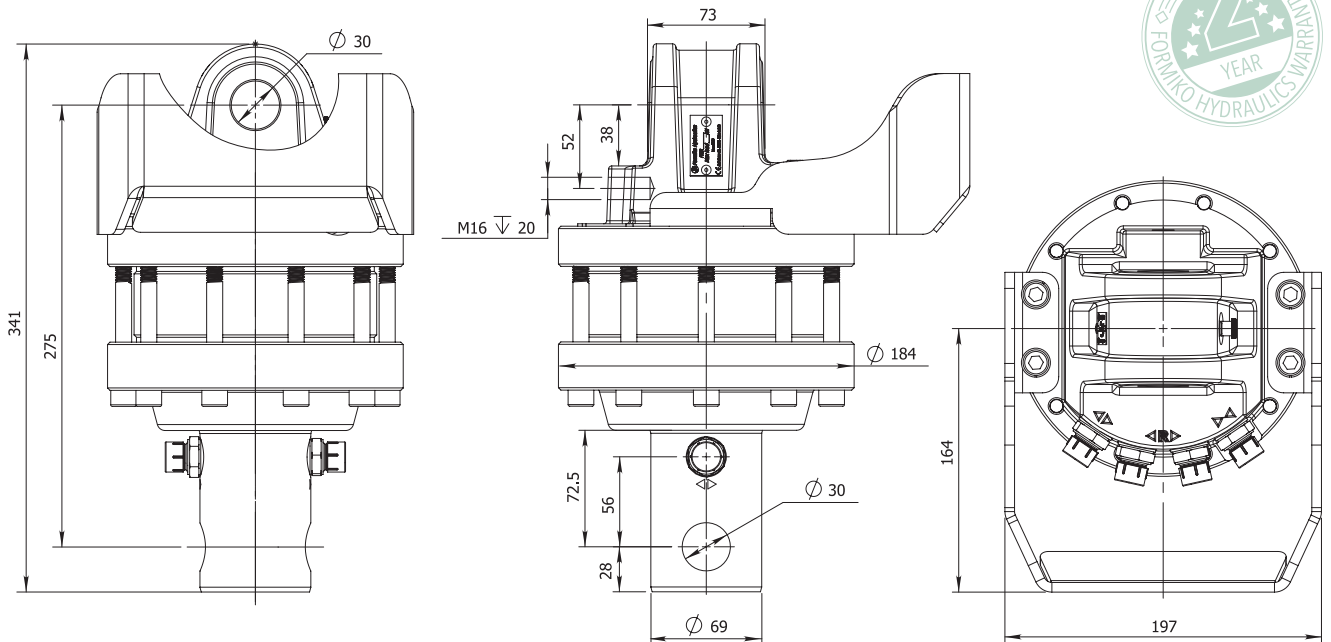
Grapple close
G3/8" Max 300 bar

Steel 4 point
fitting system
hose guard

Grapple close
G3/8"

Grapple open
G3/8"

Reliable ø69 steel
shaft for fitting
the grapple with
ø30 pin



FORESTRY



AGRICULTURE



CONSTRUCTION



GENERAL CARGO



RECYCLING



FHR 5.5L1H ROTATOR

STATIC
LOAD



55 kN

DYNAMIC
LOAD



25 kN

TORQUE
at 25MPa



1300 Nm

OILFLOW



22 l/min

WEIGHT



29 kg

Rotate left/right
G 3/8" Max 250 bar

Grapple open
G 3/8" Max 200 bar

Rotator frame
L73 ø30

Fast maintenance
greasing nipple

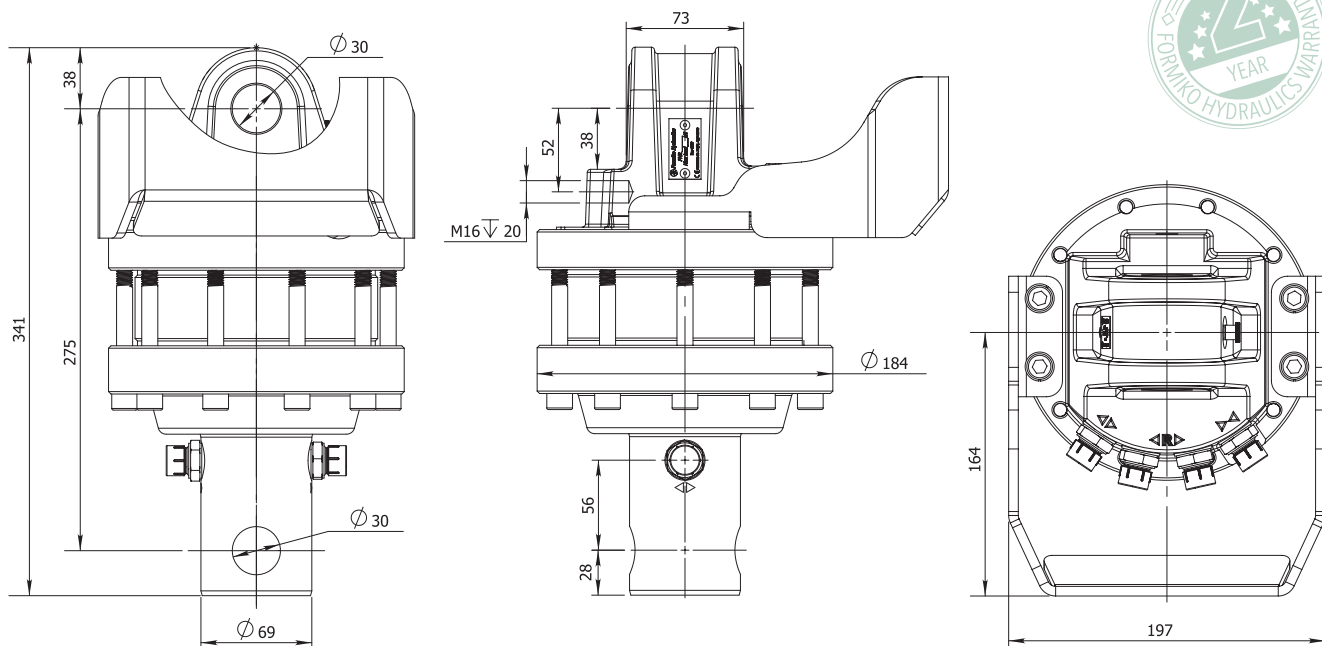
Grapple close
G 3/8"
Max 300 bar

Iron 4 point
fitting system
hose guard

Grapple close
G 3/8"

Grapple open
G 3/8"

Reliable ø69 mm steel
shaft for fitting
the grapple with
ø30mm pin



FORESTRY



AGRICULTURE



CONSTRUCTION



GENERAL CARGO



RECYCLING

ROTATOR FHR 5.5L-02

STATIC
LOAD



55 kN

DYNAMIC
LOAD



25 kN

TORQUE
at 25MPa



1300 Nm

OILFLOW



22 l/min

WEIGHT



29 kg

Rotate left/right
G3/8" Max 250 bar

Grapple open
G3/8" Max 200 bar

Rotator frame
L73 ø30

Fast maintenance
greasing nipple

Grapple close

G3/8"
Max 300 bar

Steel 4 point
fitting system
hose guard

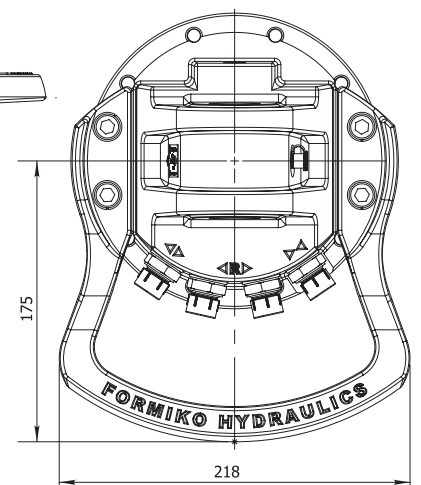
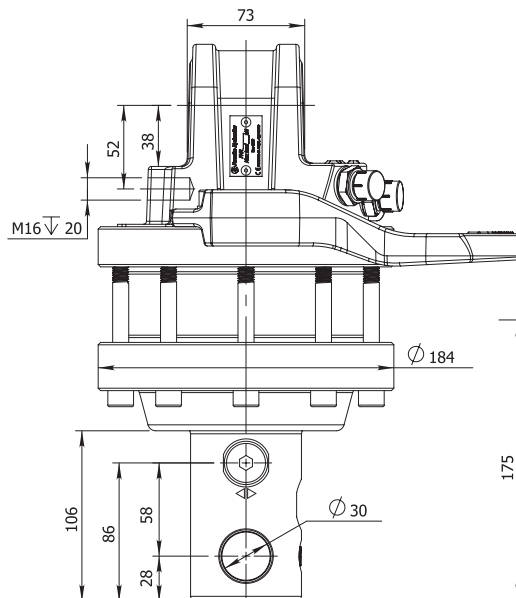
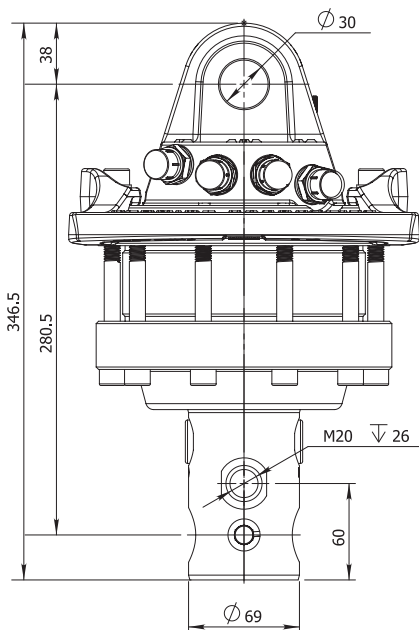
Grapple close

G1/2"

Grapple open

G1/2"

Reliable ø69 steel
shaft for fitting
the grapple with
ø30 pin



FORESTRY



AGRICULTURE



CONSTRUCTION



GENERAL CARGO



RECYCLING



FHR 5.5L-02H ROTATOR

STATIC
LOAD



55 kN

DYNAMIC
LOAD



25 kN

TORQUE
at 25MPa



1300 Nm

OILFLOW



22 l/min

WEIGHT



29 kg

Rotate left/right
G 3/8" Max 250 bar

Grapple open
G 3/8" Max 200 bar

Rotator frame
L73 Ø30

Fast maintenance
greasing nipple

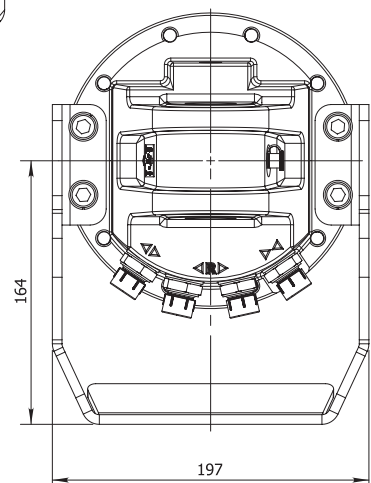
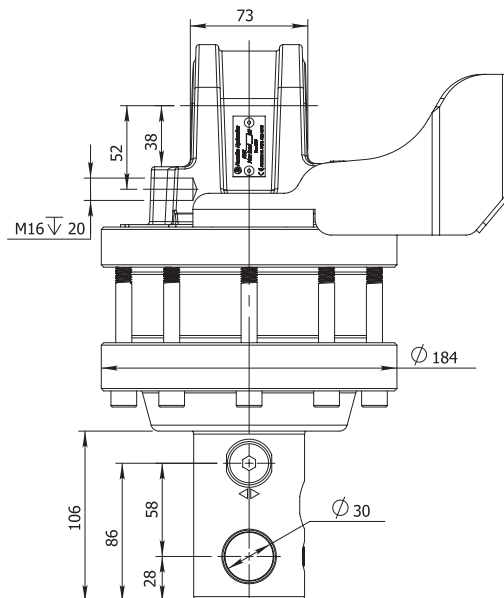
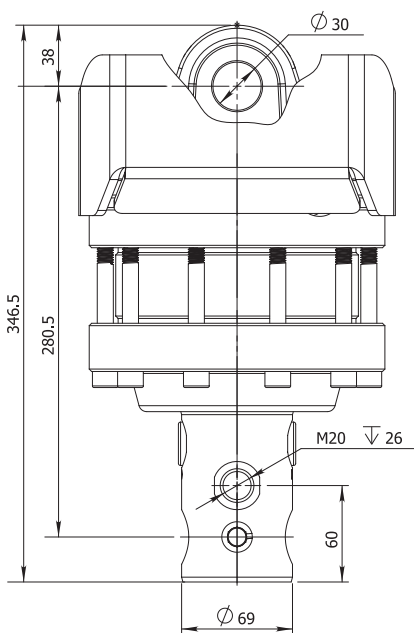
Grapple close
G 3/8" Max 300 bar

Iron 4 point
fitting system
hose guard

Grapple close
G1/2"

Grapple open
G1/2"

Reliable Ø69 mm steel
shaft for fitting
the grapple with
Ø30mm pin



FORESTRY



AGRICULTURE



CONSTRUCTION



GENERAL CARGO



RECYCLING

ROTATOR **FHR 5.5L68H**

**STATIC
LOAD**



**DYNAMIC
LOAD**



**TORQUE
at 25MPa**



OILFLOW

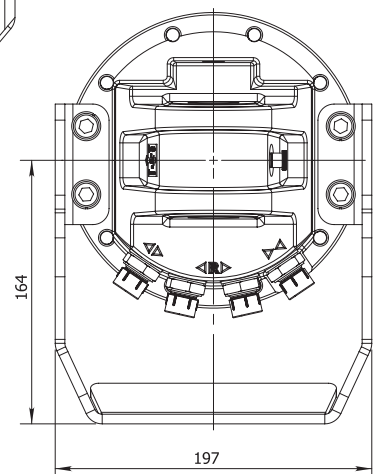
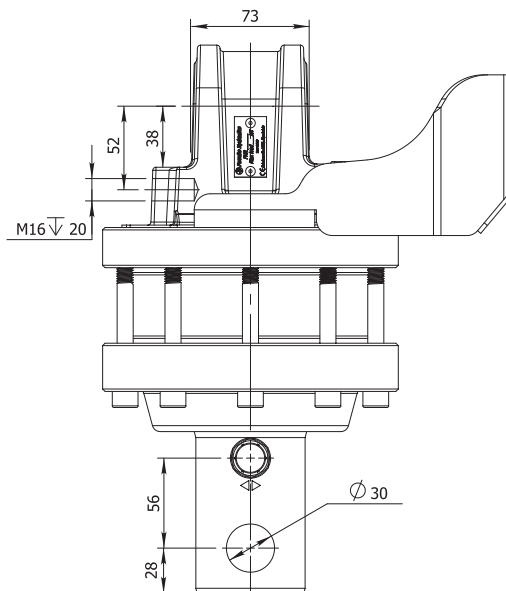
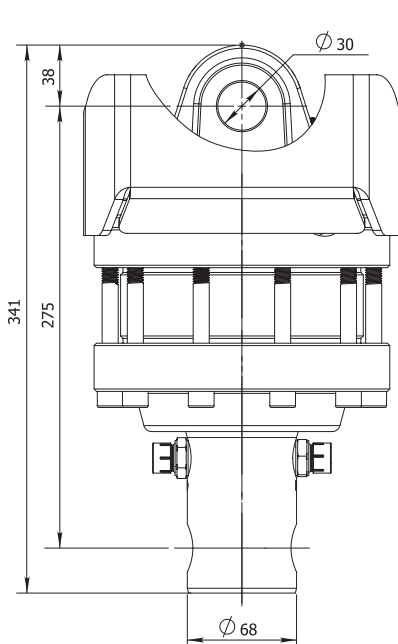
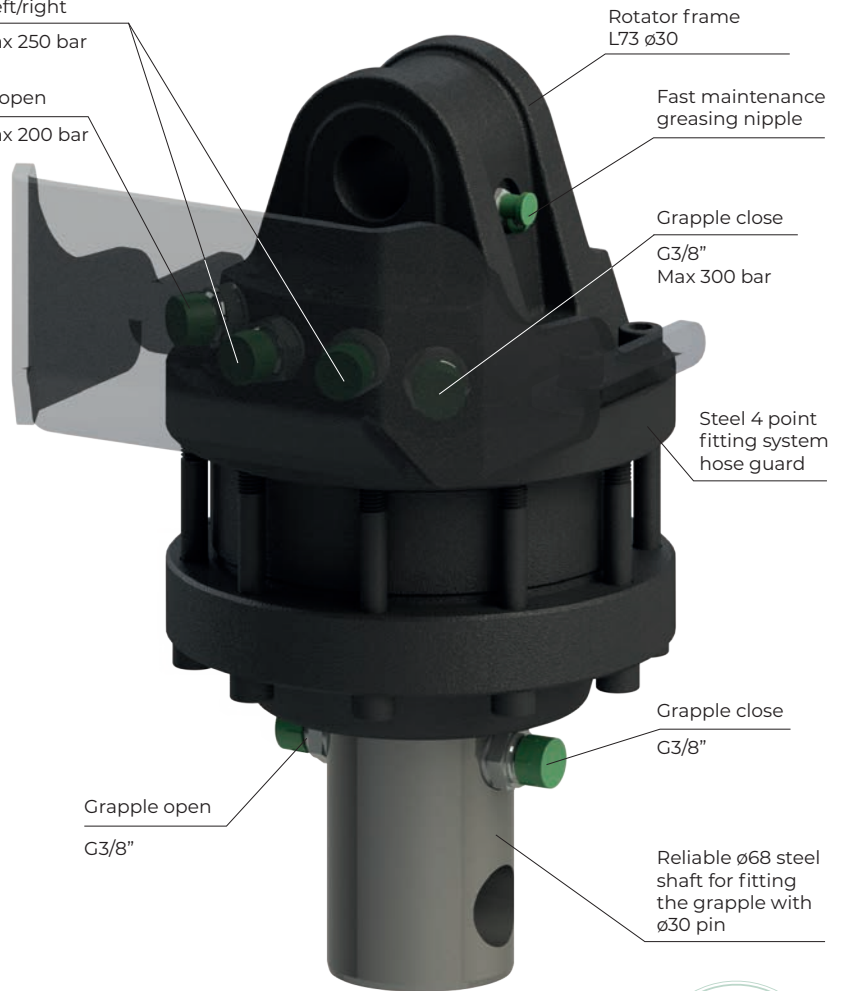


WEIGHT



Rotate left/right
G3/8" Max 250 bar

Grapple open
G3/8" Max 200 bar



FORESTRY



AGRICULTURE



CONSTRUCTION



GENERAL CARGO



RECYCLING



FHR 5.5L168H ROTATOR

STATIC
LOAD

55 kN

DYNAMIC
LOAD

25 kN

TORQUE
at 25MPa

1300 Nm

OILFLOW

22 l/min

WEIGHT

29 kg

Rotate left/right
G 3/8" Max 250 bar

Grapple open
G 3/8" Max 200 bar

Rotator frame
L73 ø30

Fast maintenance
greasing nipple

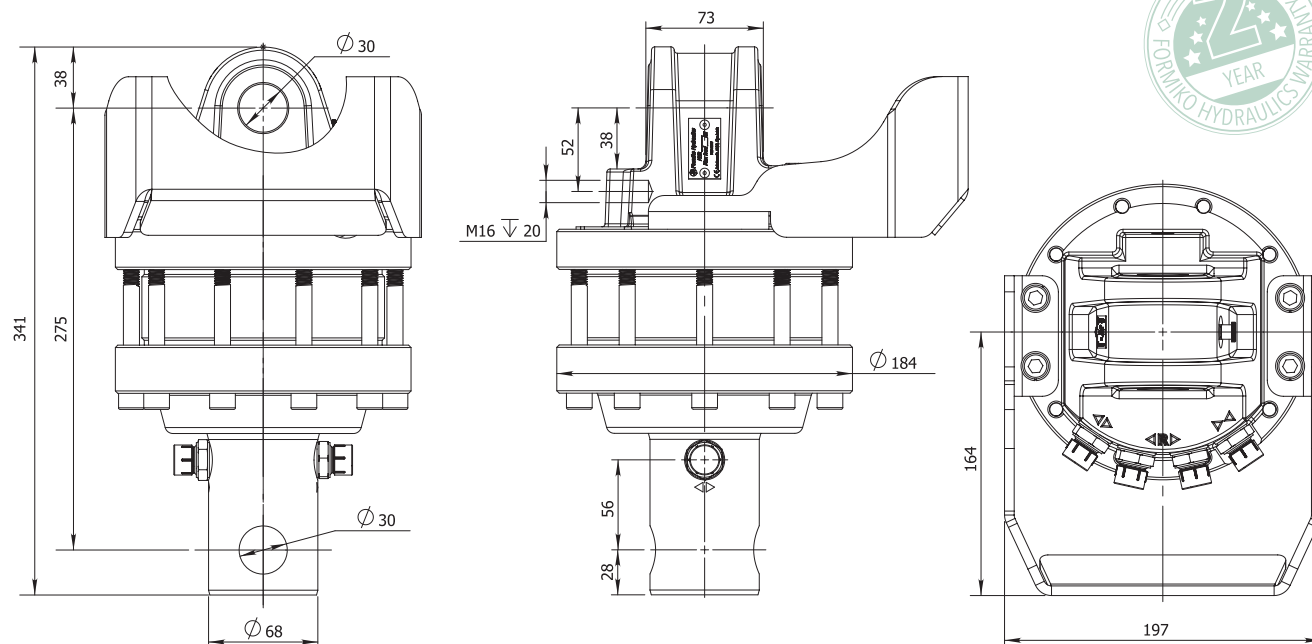
Grapple close
G 3/8"
Max 300 bar

Iron 4 point
fitting system
hose guard

Grapple close
G 3/8"

Grapple open
G 3/8"

Reliable ø68 mm steel
shaft for fitting
the grapple with
ø30mm pin



FORESTRY



AGRICULTURE



CONSTRUCTION



GENERAL CARGO



RECYCLING

ROTATOR FHR 5.500SF

STATIC
LOAD

55 kN

DYNAMIC
LOAD

25 kN

TORQUE
at 25MPa

1300 Nm

OILFLOW

22 l/min

WEIGHT

36 kg

Rotate left/right
G3/8" Max 250 bar

Grapple open
G3/8" Max 200 bar

Rotator frame
L73 ø30

Fast maintenance
greasing nipple

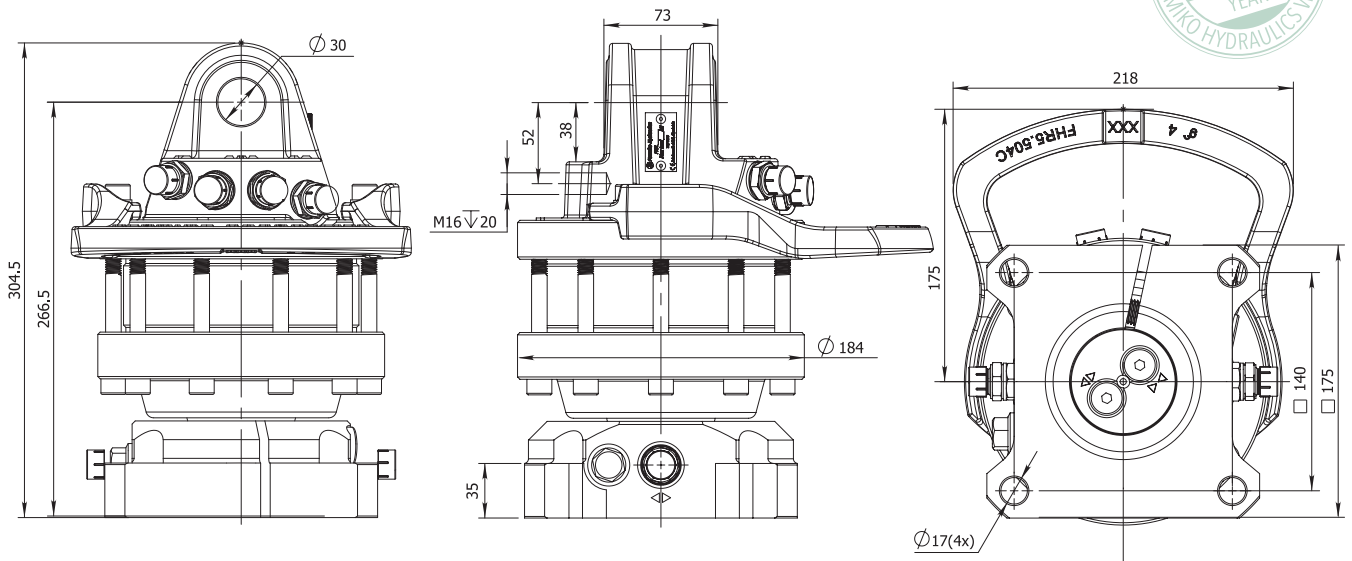
Grapple close
G3/8"
Max 300 bar

Iron 4 point
fitting system
hose guard

Grapple open
G3/8"

Grapple close
G3/8"

Optional open/close
channels



FORESTRY



AGRICULTURE



CONSTRUCTION



GENERAL CARGO



RECYCLING



FHR 5.5SFH ROTATOR

STATIC
LOAD

55 kN

DYNAMIC
LOAD

25 kN

TORQUE
at 25MPa

1300 Nm

OILFLOW

22 l/min

WEIGHT

36 kg

Rotate left/right
G3/8" Max 250 bar

Grapple open
G3/8" Max 200 bar

Rotator frame
L73 ø30

Fast maintenance
greasing nipple

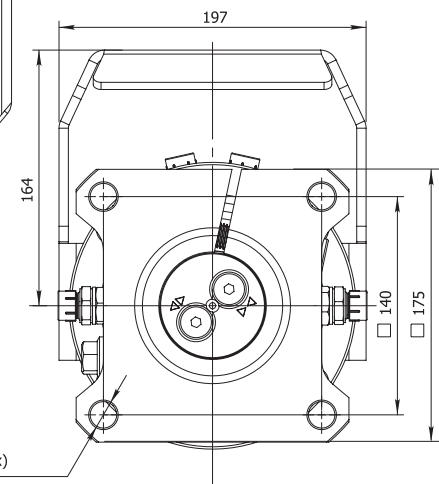
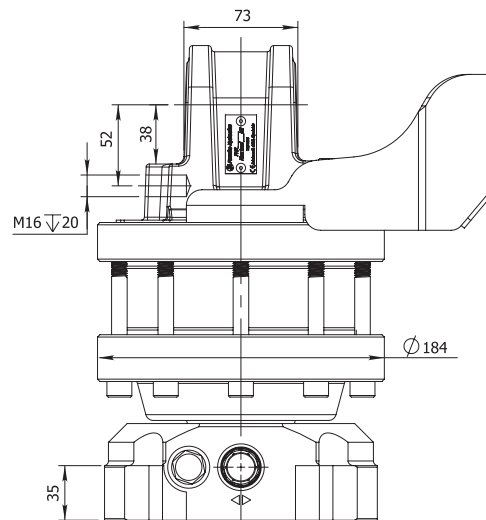
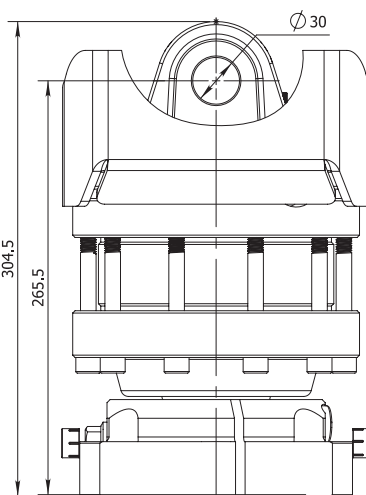
Grapple close
G3/8" Max 300 bar

Steel 4 point
fitting system
hose guard

Grapple open
G3/8"

Grapple close
G3/8"

Optional open/close
channels



FORESTRY



AGRICULTURE



CONSTRUCTION



GENERAL CARGO



RECYCLING

ROTATOR FHR 5.500F6

STATIC
LOAD



DYNAMIC
LOAD



TORQUE
at 25MPa



OILFLOW



WEIGHT



**FORGED
STEEL**

Rotate left/right
G3/8" Max 250 bar

Grapple open
G3/8" Max 200 bar

Rotator frame
L73 ø30

Fast maintenance
greasing nipple

Grapple close
G3/8"
Max 300 bar

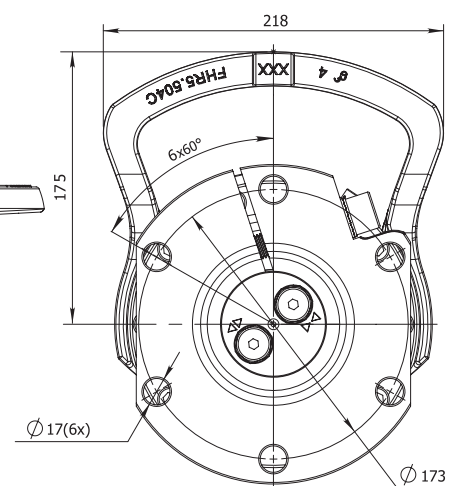
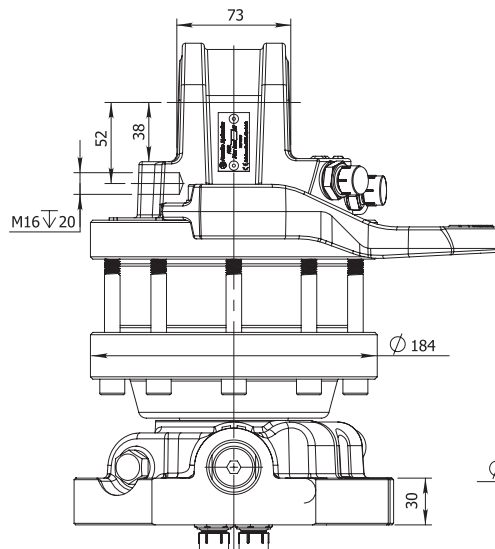
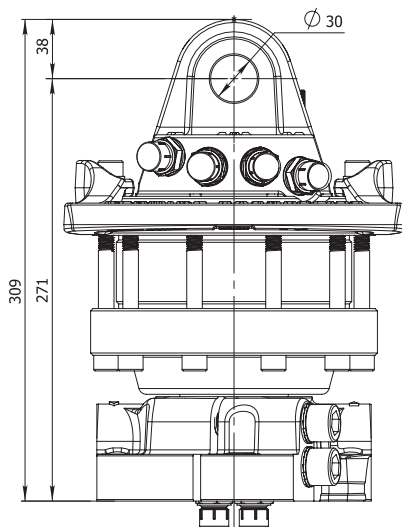
Iron 4 point
fitting system
hose guard

Grapple open
G1/2"

Grapple close
G1/2"

Optional open/close
channels G3/8

Robust and
shock resistant
steel flange for
fitting the grapple
in standard pattern
with 6xM16 bolts



FORESTRY



AGRICULTURE



CONSTRUCTION



GENERAL CARGO



RECYCLING



FHR 5.5F6H ROTATOR



FORGED STEEL

Rotate left/right
G3/8" Max 250 bar

Grapple open
G3/8" Max 200 bar

Grapple open
G1/2"

Optional open/close
channels G3/8

Rotator frame
L73 ø30

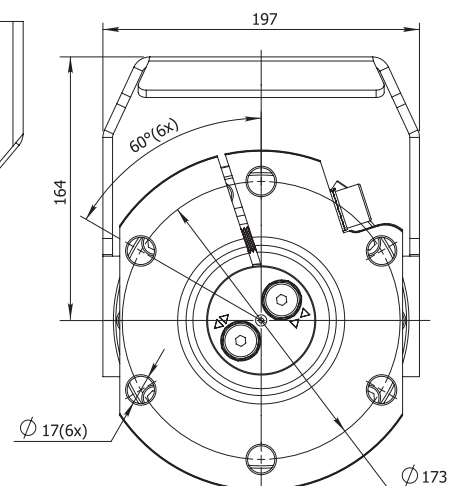
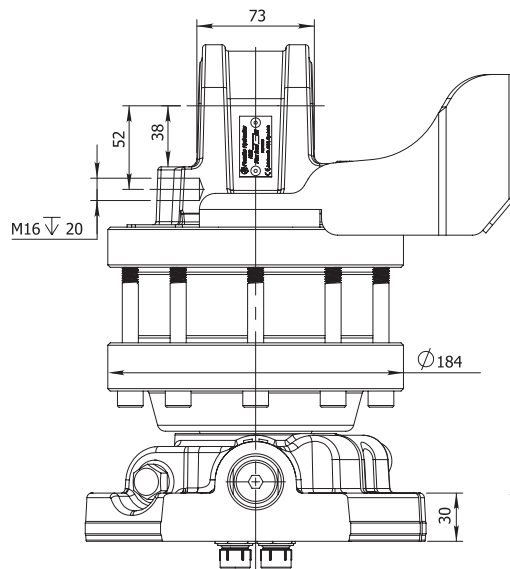
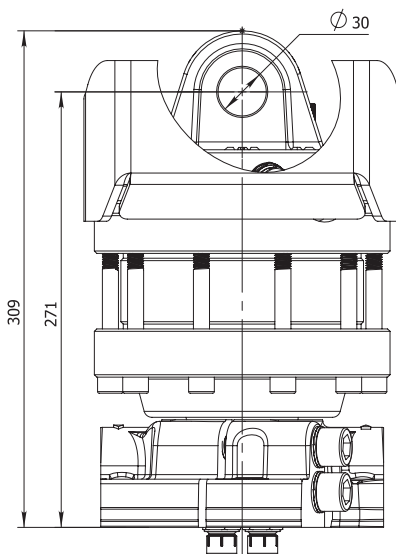
Fast maintenance
greasing nipple

Grapple close
G3/8"
Max 300 bar

Iron 4 point
fitting system
hose guard

Grapple close
G1/2"

Robust and shock resistant
steel flange for fitting the
grapple in standard pattern
with 6xM16 bolts



FORESTRY



AGRICULTURE



CONSTRUCTION



GENERAL CARGO



RECYCLING

ROTATOR FHR 6LD1-68

STATIC
LOAD

60 kN

DYNAMIC
LOAD

30 kN

TORQUE
at 25MPa

1850 Nm

OILFLOW

25 l/min

WEIGHT

37 kg



DOUBLE
BEARING

Grapple open
G1/2" Max 250 bar

Rotate left/right
G1/2" Max 250 bar

Rotator frame L80 ø35

Grapple close
G1/2" Max 300 bar

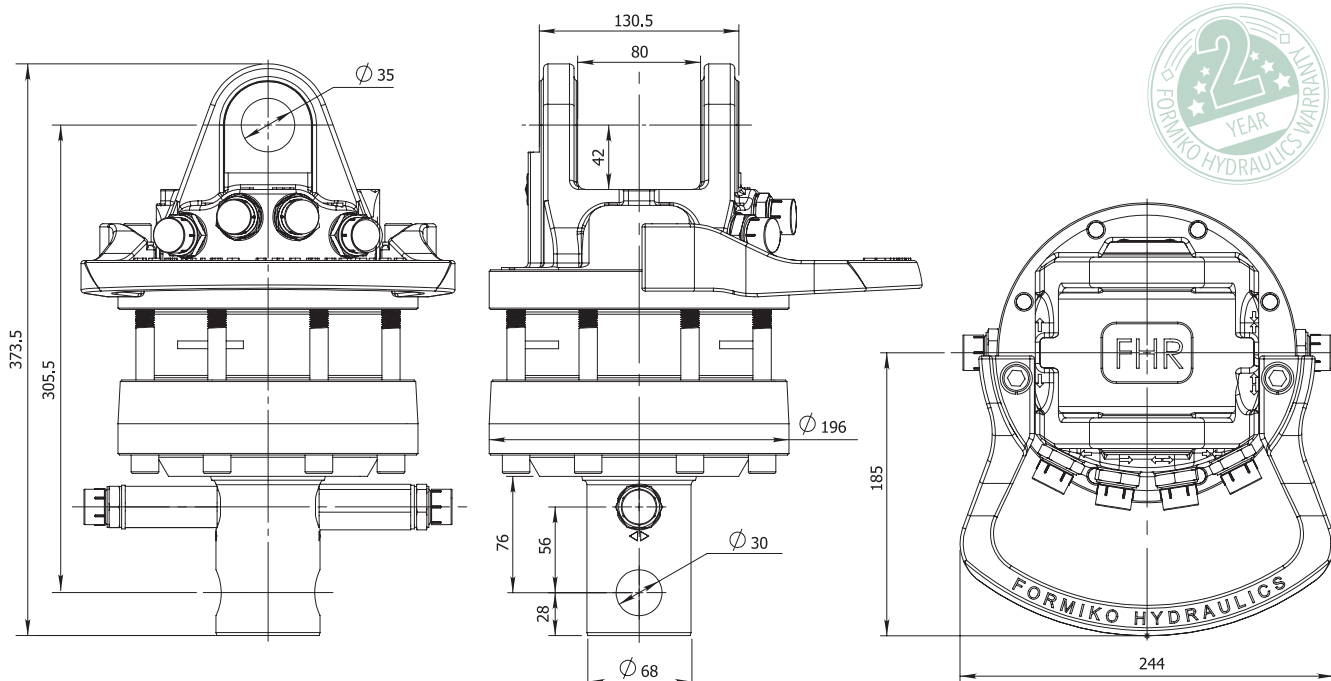
Rotator with
two bearings
to withstand
compression
and stretching
forces

Rotator designed
for intensive
professional use
and extended
long lifetime

Grapple close
G1/2"

Grapple open
G1/2"

Reliable ø68 steel shaft
for fitting the grapple
with ø30 pin



FORESTRY



AGRICULTURE



CONSTRUCTION



GENERAL CARGO



RECYCLING



FHR 6LD1-68H ROTATOR

STATIC
LOAD

60 kN

DYNAMIC
LOAD

30 kN

TORQUE
at 25MPa

1850 Nm

OILFLOW

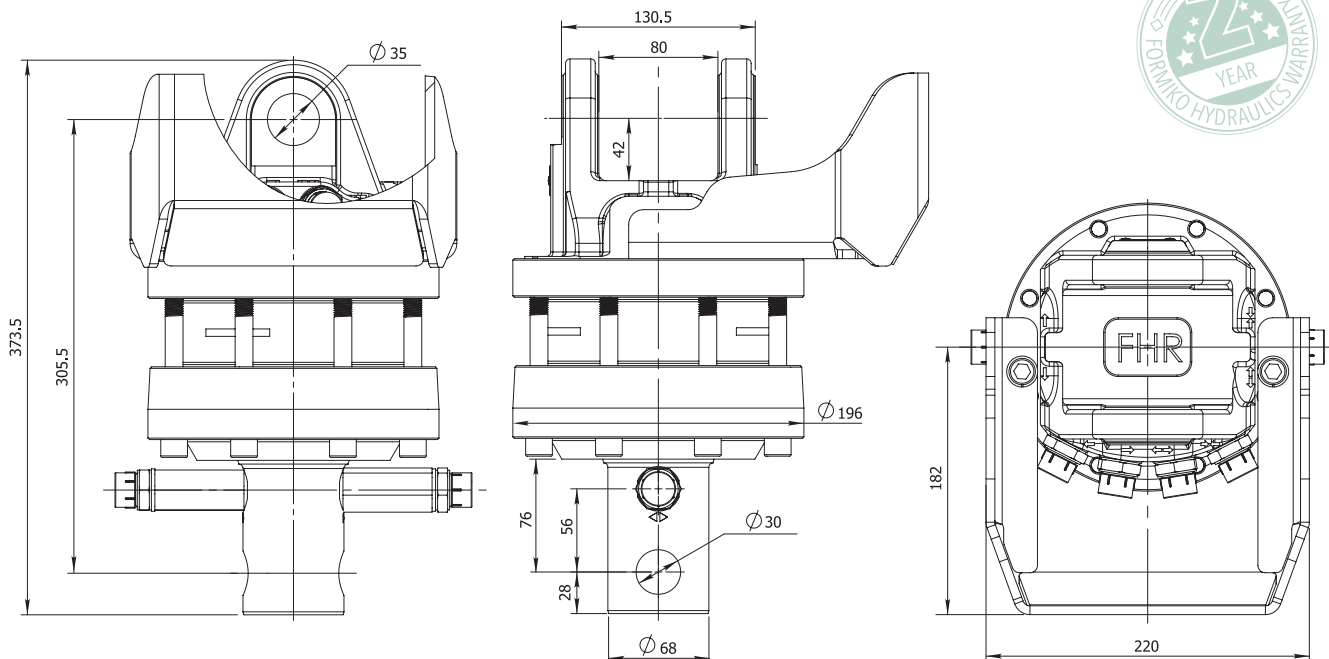
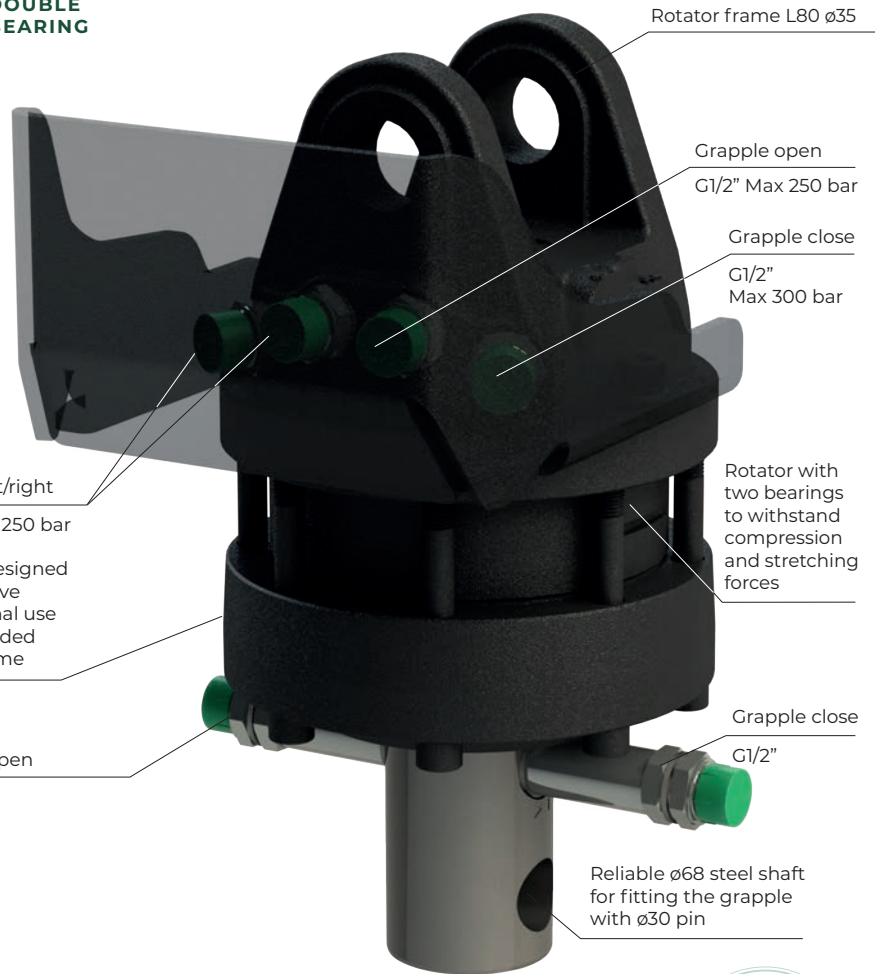
25 l/min

WEIGHT

37 kg



DOUBLE
BEARING



FORESTRY



AGRICULTURE



CONSTRUCTION



GENERAL CARGO



RECYCLING

STATIC
LOAD



60 kN

DYNAMIC
LOAD



30 kN

TORQUE
at 25MPa



1850 Nm

OILFLOW



25 l/min

WEIGHT



37 kg



**DOUBLE
BEARING**

Grapple open
G1/2" Max 250 bar

Rotate left/right
G1/2" Max 250 bar

Rotator frame L80 ø35

Grapple close
G1/2" Max 300 bar

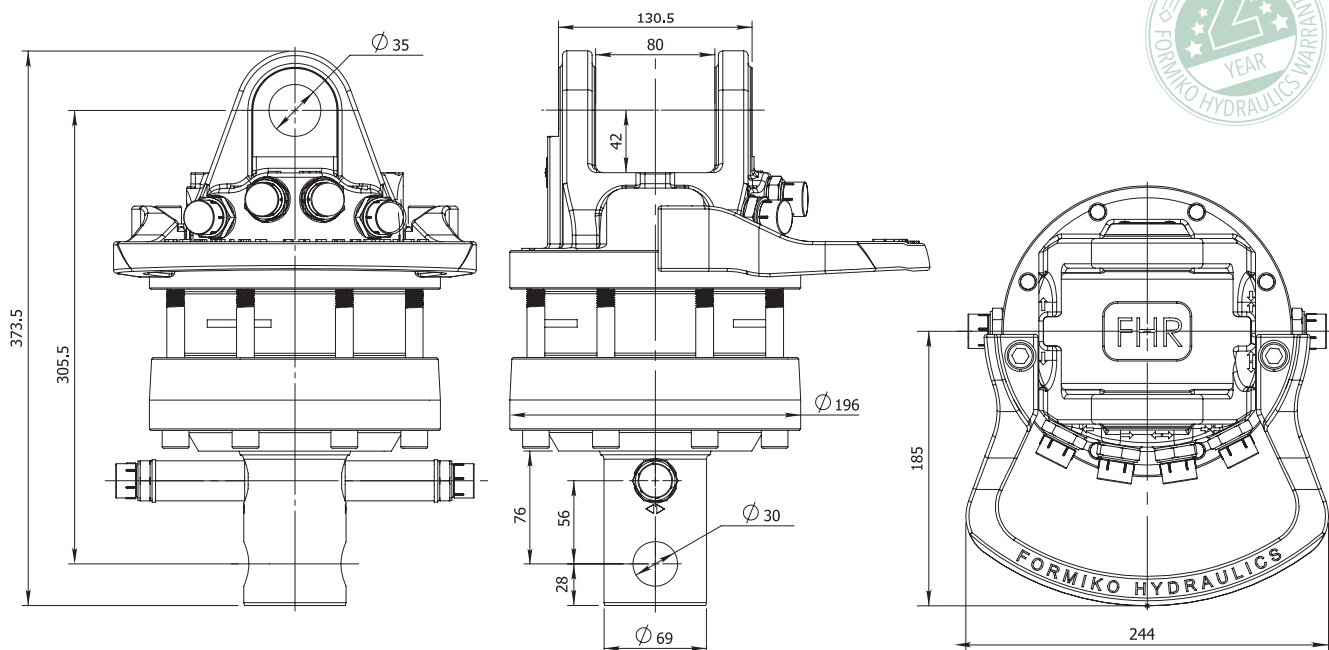
Rotator with two bearings to withstand compression and stretching forces

Rotator designed for intensive professional use and extended long lifetime

Grapple open
G1/2"

Grapple close
G1/2"

Reliable ø69 steel shaft for fitting the grapple with ø30 pin



FORESTRY



AGRICULTURE



CONSTRUCTION



GENERAL CARGO



RECYCLING



FHR 6LD1-69H ROTATOR

STATIC
LOAD

60 kN

DYNAMIC
LOAD

30 kN

TORQUE
at 25MPa

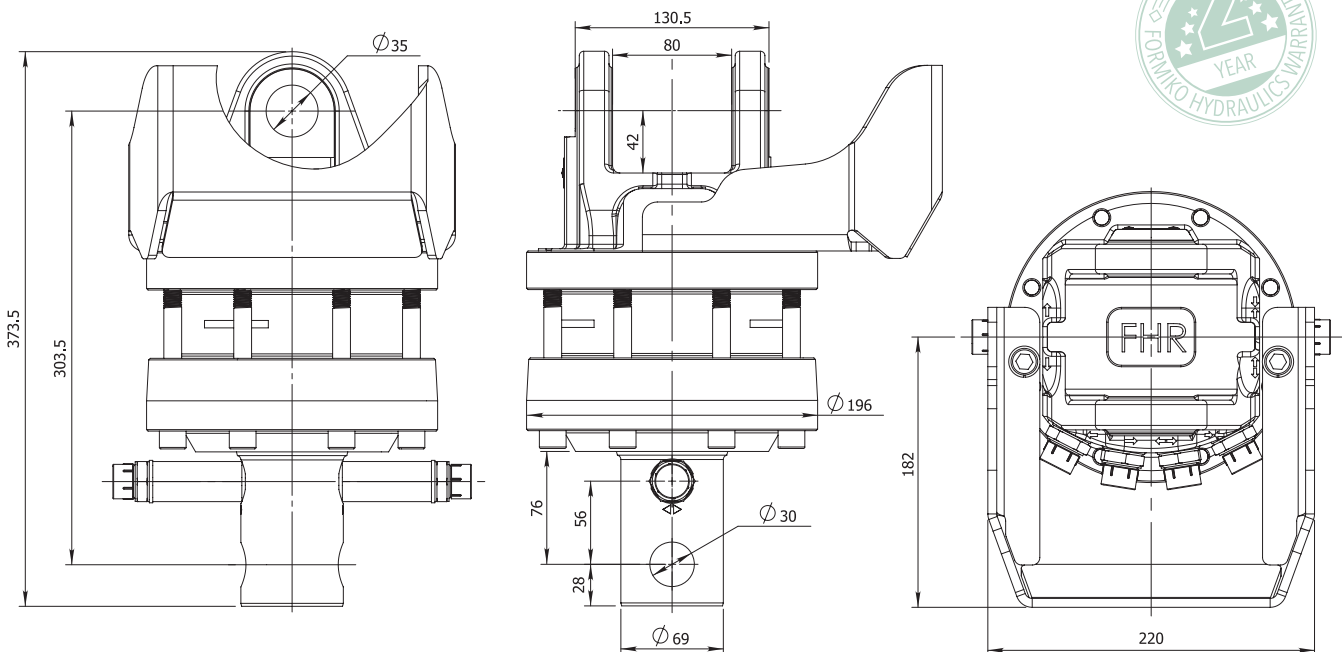
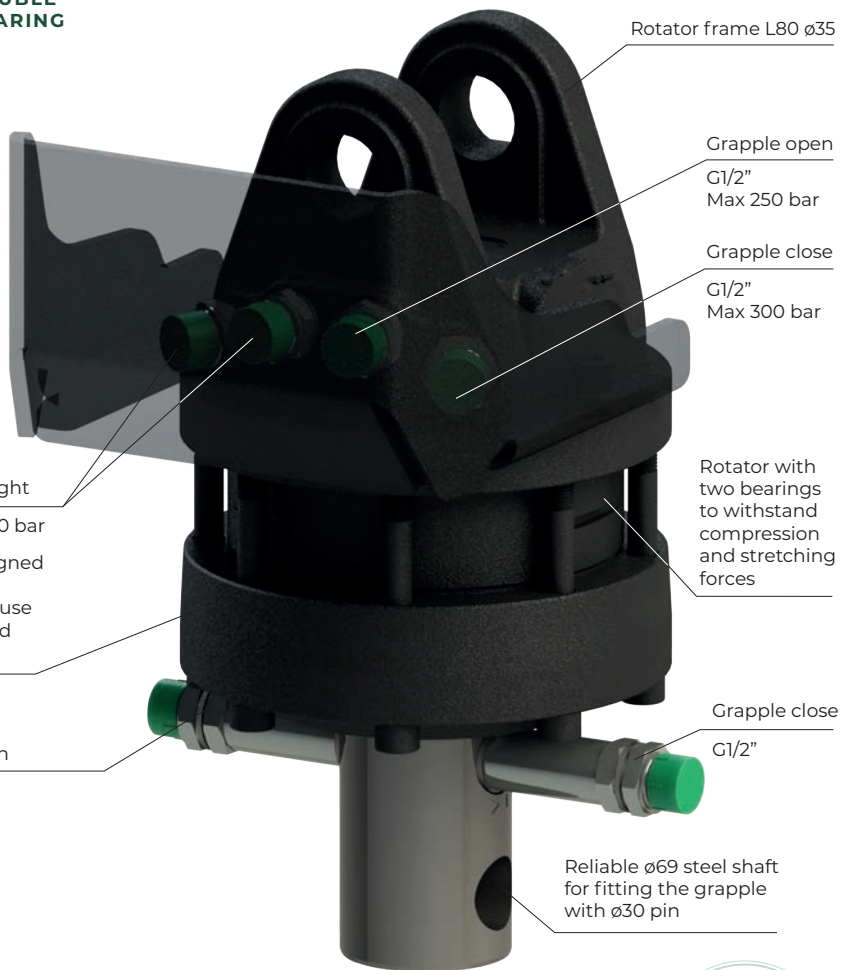
1850 Nm

OILFLOW

25 l/min

WEIGHT

38 kg



FORESTRY



AGRICULTURE



CONSTRUCTION



GENERAL CARGO



RECYCLING

STATIC
LOAD

60 kN

DYNAMIC
LOAD

30 kN

TORQUE
at 25MPa

1850 Nm

OILFLOW

25 l/min

WEIGHT

39 kg



DOUBLE
BEARING

Grapple open
G1/2" Max 250 bar

Rotate left/right
G1/2" Max 250 bar

Rotator frame L80 ø35

Grapple close
G1/2" Max 300 bar

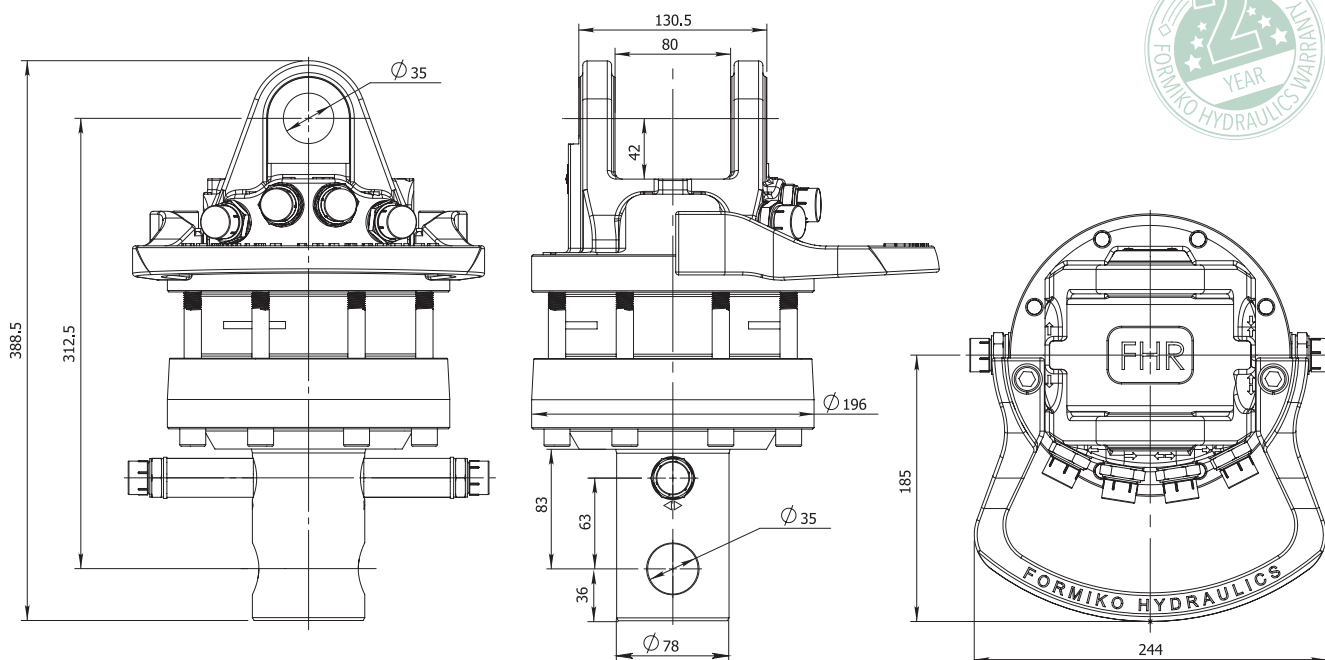
Rotator with
two bearings
to withstand
compression and
stretching forces

Rotator designed
for intensive
professional use
and extended
long lifetime

Grapple open
G1/2"

Grapple close
G1/2"

Reliable ø78 steel shaft
for fitting the grapple
with ø35 pin



FORESTRY



AGRICULTURE



CONSTRUCTION



GENERAL CARGO



RECYCLING



FHR 6LD1-78H ROTATOR

STATIC
LOAD

60 kN

DYNAMIC
LOAD

30 kN

TORQUE
at 25MPa

1850 Nm

OILFLOW

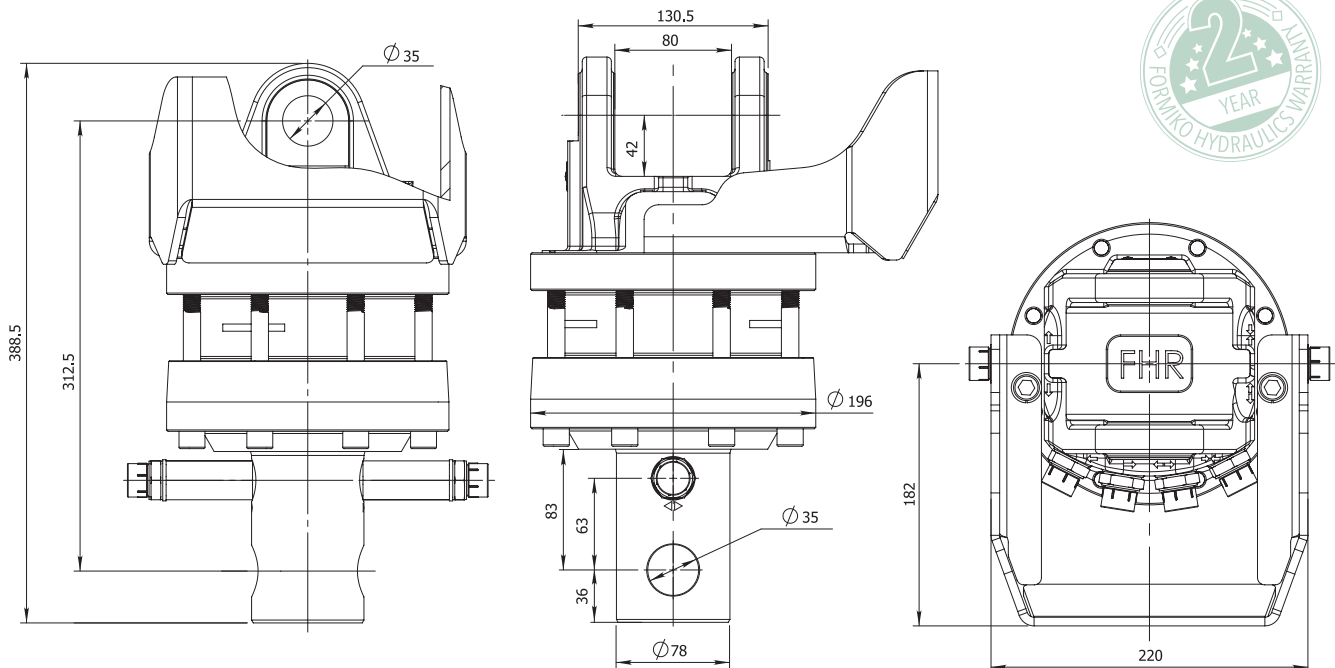
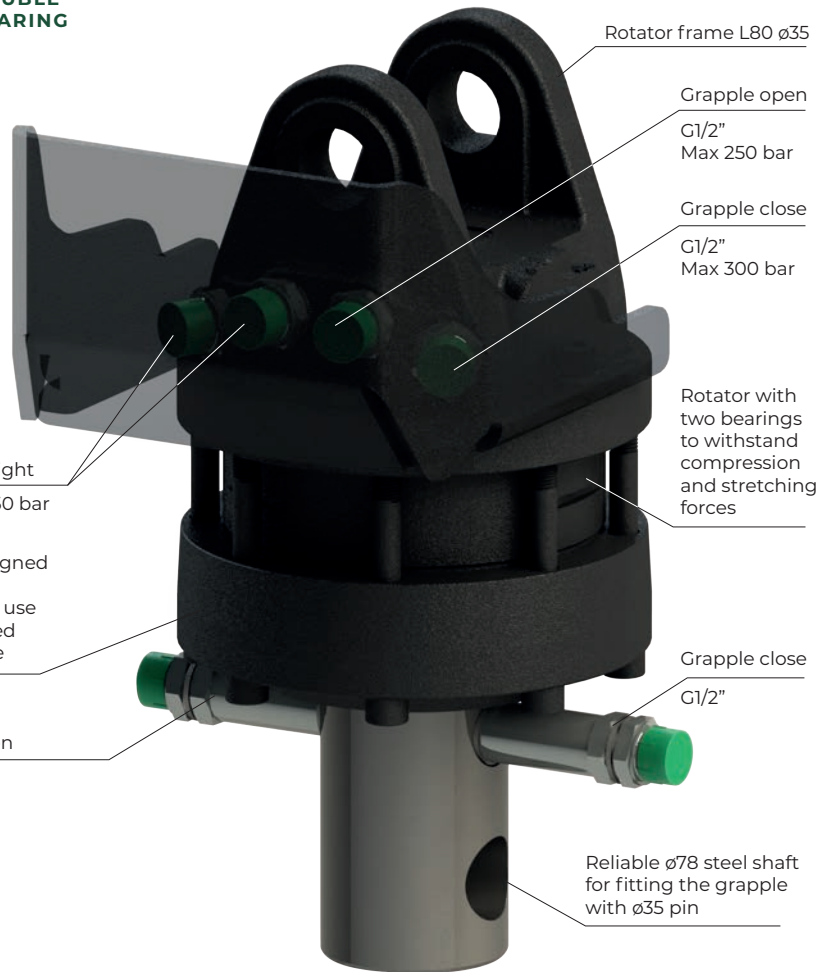
25 l/min

WEIGHT

40 kg



DOUBLE
BEARING



FORESTRY



AGRICULTURE



CONSTRUCTION



GENERAL CARGO



RECYCLING

ROTATOR FHR 6FD1

STATIC
LOAD



60 kN

DYNAMIC
LOAD



30 kN

TORQUE
at 25MPa



1850 Nm

OILFLOW



25 l/min

WEIGHT



45 kg



DOUBLE
BEARING



FORGED
STEEL

Grapple open
G1/2" Max 250 bar

Rotate left/right
G1/2" Max 250 bar

Rotator frame L80 ø35

Grapple close
G1/2" Max 300 bar

Rotator designed for intensive professional use and extended long lifetime

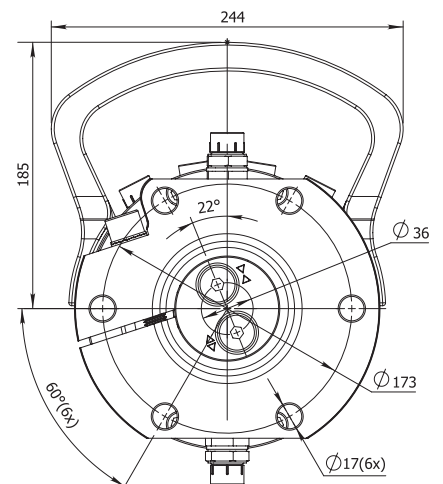
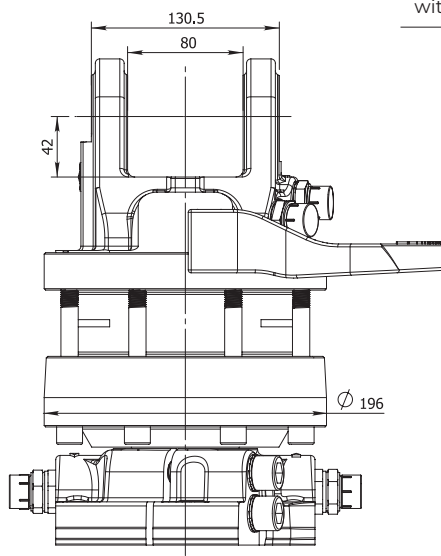
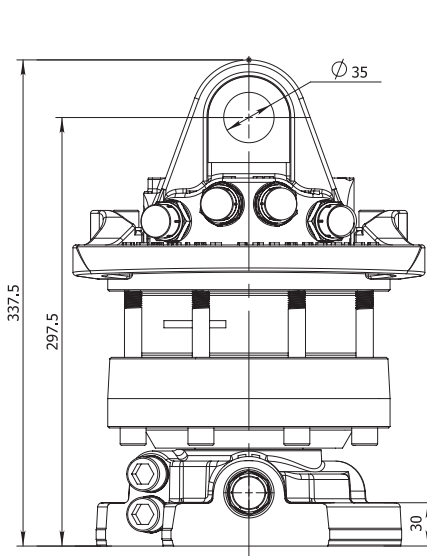
Rotator with two bearings to withstand compression and stretching forces

Grapple open
G1/2"

Grapple close
G1/2"

Optional open/close channels

Robust and shock resistant steel flange for fitting the grapple in standard pattern with 6xM16 bolts



FORESTRY



AGRICULTURE



CONSTRUCTION



GENERAL CARGO



RECYCLING



FHR 6FD1H ROTATOR

STATIC
LOAD

60 kN

DYNAMIC
LOAD

30 kN

TORQUE
at 25MPa

1850 Nm

OILFLOW

25 l/min

WEIGHT

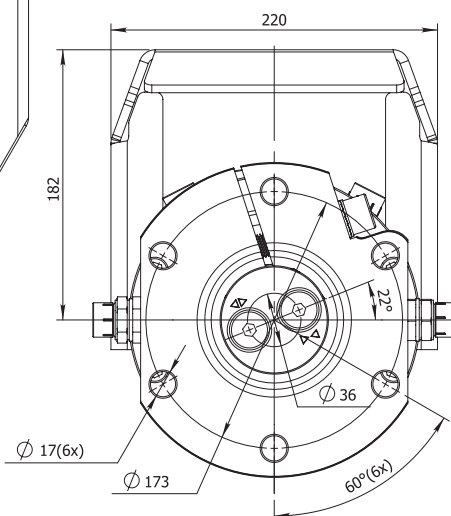
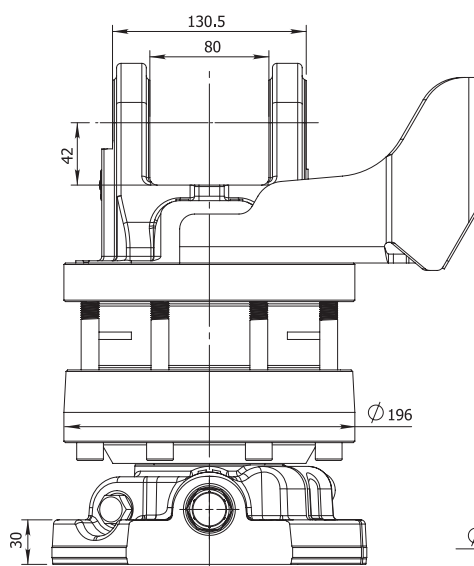
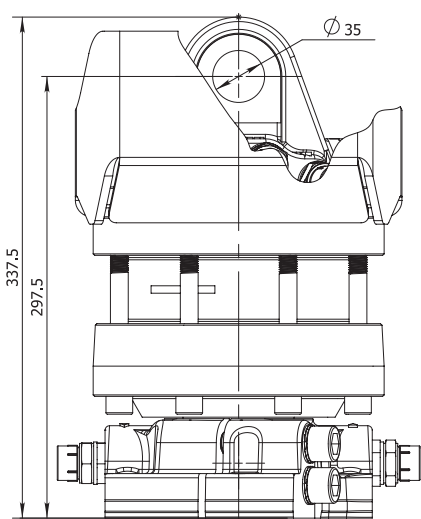
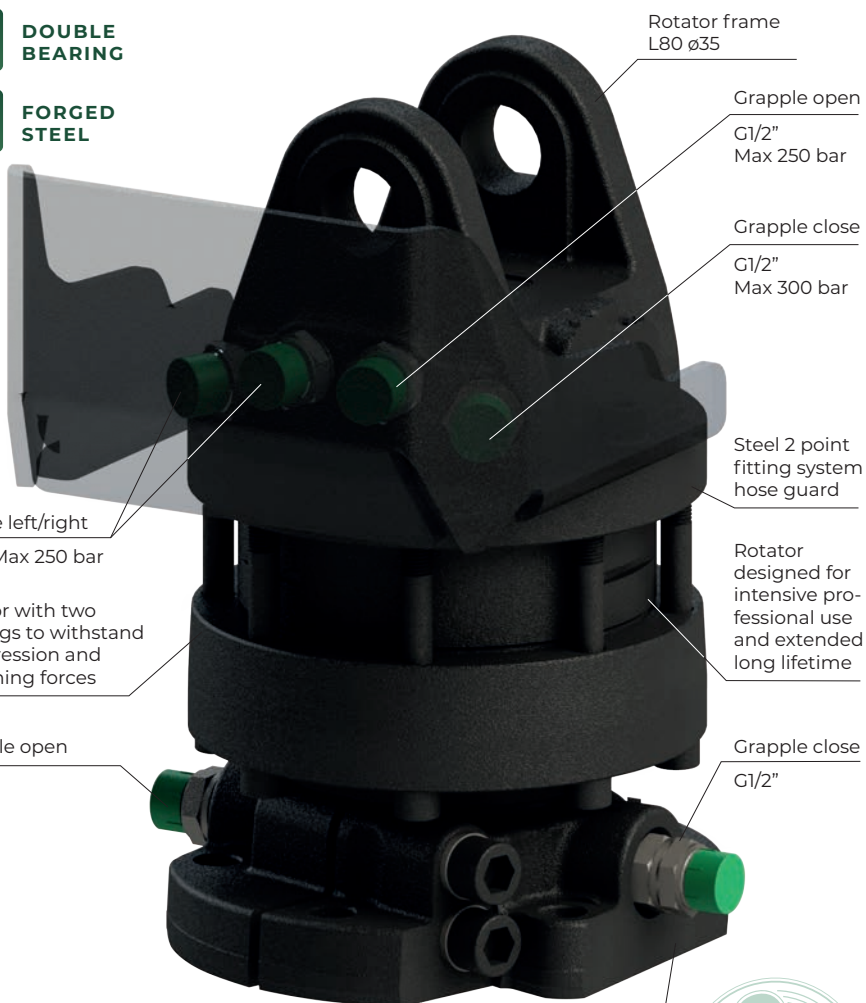
46 kg



DOUBLE
BEARING



FORGED
STEEL



FORESTRY



AGRICULTURE



CONSTRUCTION



GENERAL CARGO



RECYCLING

STATIC
LOAD

60 kN

DYNAMIC
LOAD

30 kN

TORQUE
at 25MPa

1850 Nm

OILFLOW

25 l/min

WEIGHT

39 kg



OPPOSITE HOSE
CONNECTION



DOUBLE
BEARING

Grapple close
G1/2" Max 300 bar
Grapple open
G1/2"
Max 250 bar

Rotator designed
for intensive
professional use
and extended
long lifetime

Rotator frame
L80 ø35

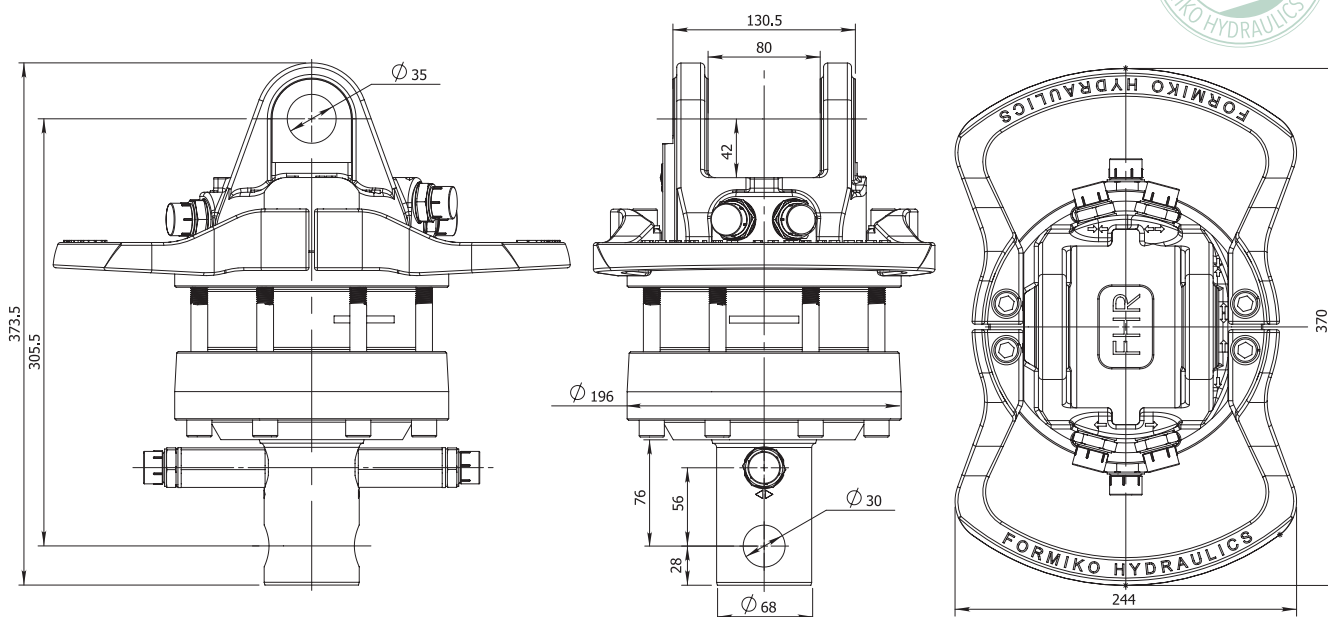
Rotate left/right
G1/2" Max 250 bar

Rotator with
two bearings
to withstand
compression
and stretching
forces

Grapple close

G1/2"
Reliable ø68 steel shaft
for fitting the grapple
with ø30 pin

Grapple open
G1/2"



FORESTRY



AGRICULTURE



CONSTRUCTION



GENERAL CARGO



RECYCLING



FHR 6LD2-78 ROTATOR

STATIC
LOAD

60 kN

DYNAMIC
LOAD

30 kN

TORQUE
at 25MPa

1850 Nm

OILFLOW

25 l/min

WEIGHT

41 kg



OPPOSITE HOSE
CONNECTION



DOUBLE
BEARING

Grapple close

G1/2" Max 300 bar

Grapple open

G1/2"
Max 250 bar

Rotator frame
L80 ø35

Rotate left/right

G1/2" Max 250 bar

Rotator designed
for intensive
professional use
and extended
long lifetime

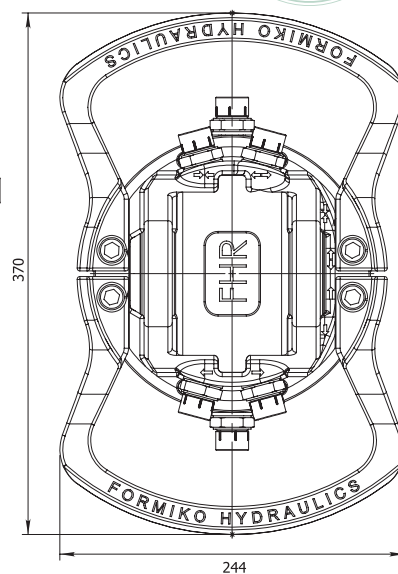
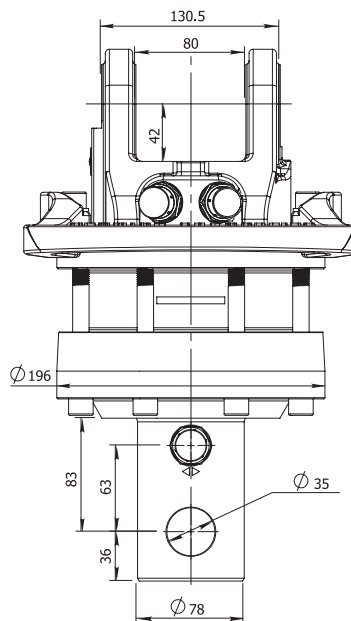
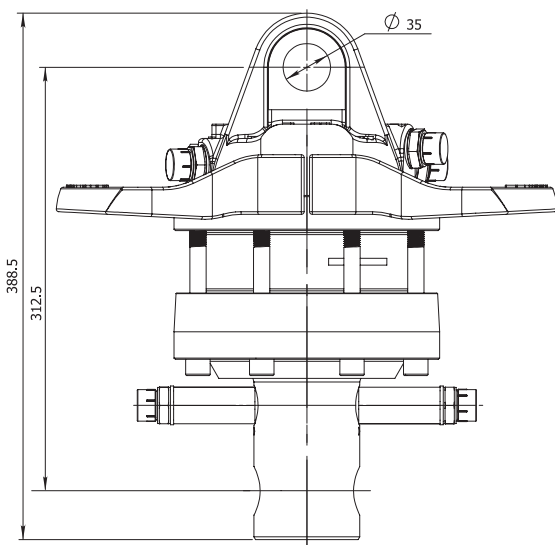
Rotator with
two bearings
to withstand
compression and
stretching forces

Grapple close

G1/2"

Reliable ø78 steel shaft
for fitting the grapple
with ø35 pin

Grapple open
G1/2"



FORESTRY



AGRICULTURE



CONSTRUCTION



GENERAL CARGO



RECYCLING

ROTATOR FHR 6FD2

STATIC
LOAD



DYNAMIC
LOAD



TORQUE
at 25MPa



OILFLOW



WEIGHT



OPPOSITE HOSE
CONNECTION



DOUBLE
BEARING



FORGED
STEEL

Grapple open
G1/2"
Max 250 bar

Grapple close
G1/2" Max 300 bar

Rotator designed for
intensive professional use
and extended long lifetime

Grapple open
G1/2"

Rotator frame L80 ø35

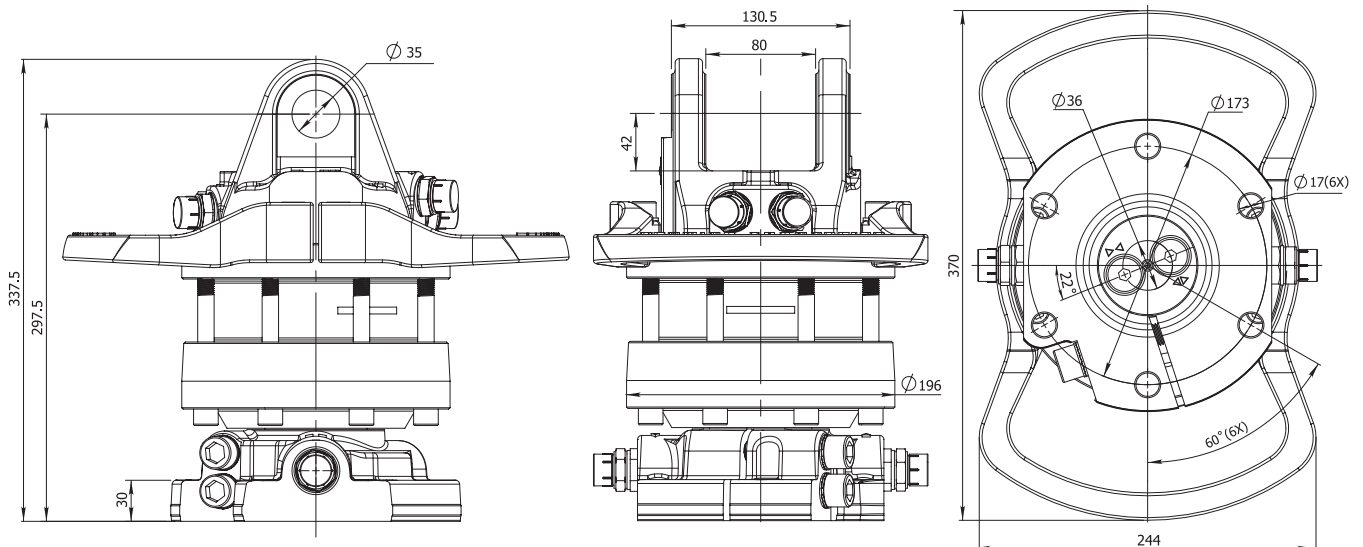
Rotate left/right
G1/2" Max 250 bar

Rotator with two bearings
to withstand
compression and
stretching forces

Grapple close
G1/2"

Optional open/close channels

Robust and shock resistant
steel flange for fitting
the grapple in standard
pattern with 6xM16 bolts



FORESTRY



AGRICULTURE



CONSTRUCTION



GENERAL CARGO



RECYCLING



FHR 6FF2S ROTATOR

STATIC LOAD

 **60 kN**

DYNAMIC LOAD

 **30 kN**

TORQUE at 25MPa

 **1850 Nm**

OILFLOW

 **25 l/min**

WEIGHT

 **47 kg**

DOUBLE BEARING

Grapple open
G3/8"
Max 250 bar

Grapple close
G3/8"
Max 300 bar

Rotate left/right
G3/8"
Max 250 bar

Rotator with two bearings to withstand compression and stretching forces

Grapple open
G3/8"

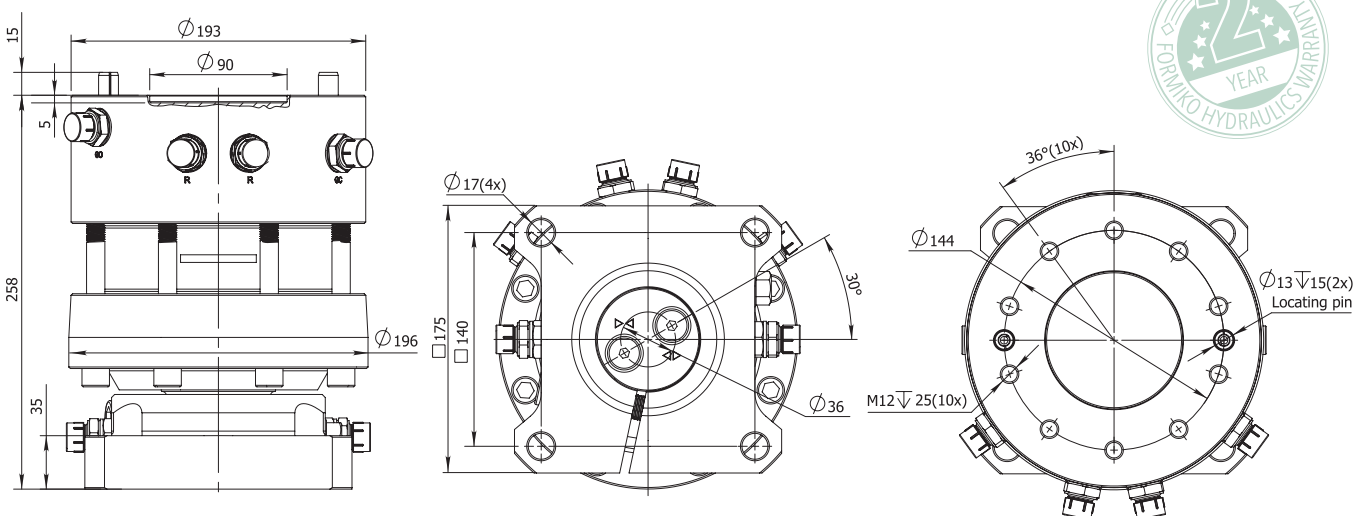
Grapple close
G3/8"

Optional open/close channels

Robust and shock resistant steel flange for fitting the grapple in standard pattern

Rotator frame Ø193 for fitting plate Ø144 M12(10x)

Rotator designed for intensive professional use and extended long lifetime

FORESTRY



AGRICULTURE



CONSTRUCTION

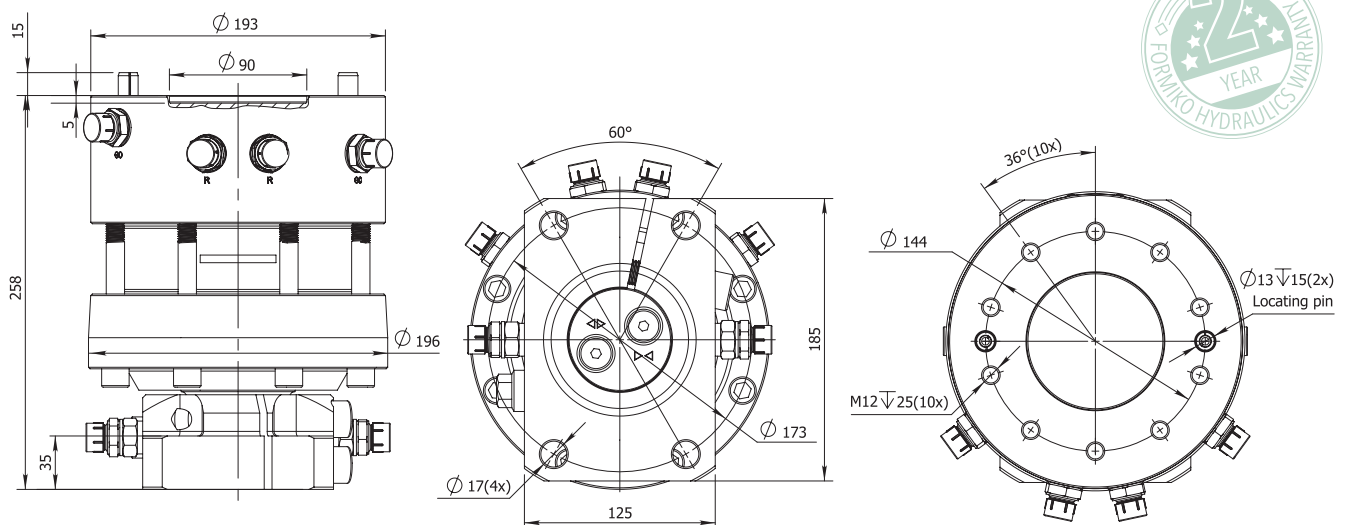


GENERAL CARGO



RECYCLING

ROTATOR FHR 6FF2R



FORESTRY



AGRICULTURE



CONSTRUCTION



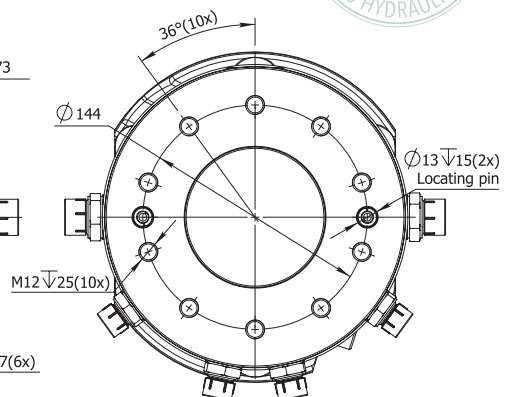
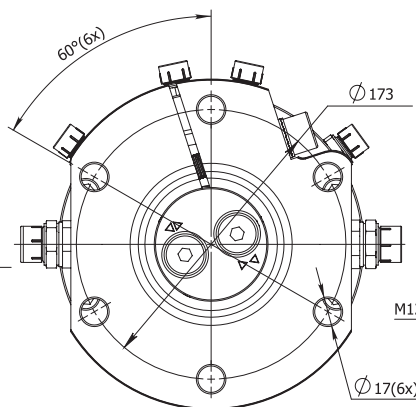
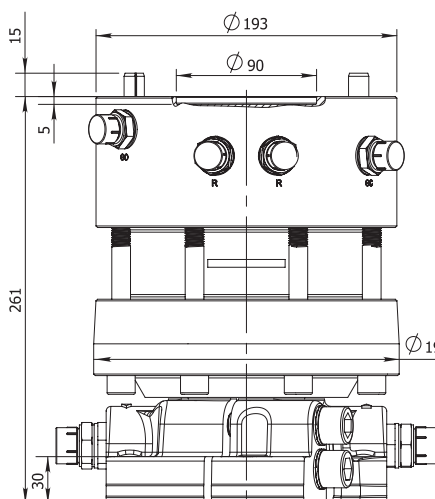
GENERAL CARGO



RECYCLING



FHR 6FF2X ROTATOR



FORESTRY



AGRICULTURE



CONSTRUCTION



GENERAL CARGO



RECYCLING

ROTATOR FHR 6FF4X

STATIC LOAD

60 kN

DYNAMIC LOAD

30 kN

TORQUE at 25MPa

1850 Nm

OILFLOW

25 l/min

WEIGHT

57 kg

DOUBLE BEARING

FORGED STEEL

Grapple open
G1/2" Max 250 bar

Grapple close
G1/2" Max 300 bar

1 Extra oil function
G1/2" Max 300 bar

Rotate left/right
G1/2" Max 250 bar

Rotator with two bearings to withstand compression and stretching forces

2 Extra oil function

Rotator frame Ø193 for fitting plate Ø144 M12(10x)

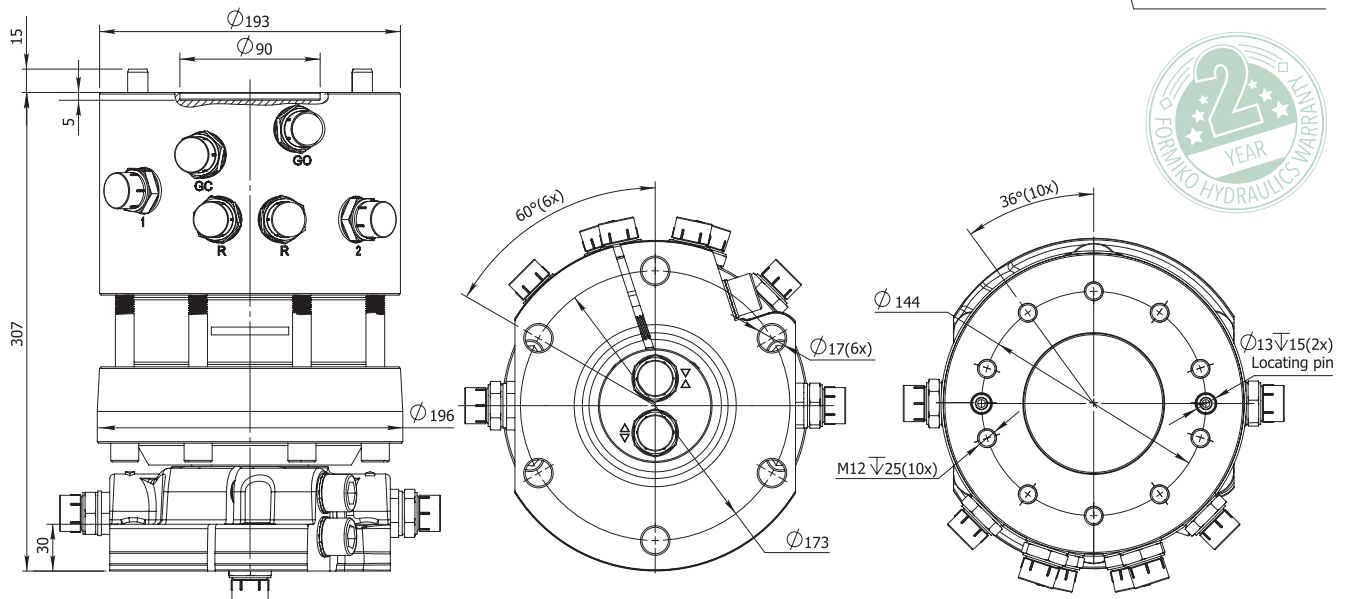
2 Extra oil function
G1/2" Max 300 bar

Rotator designed for intensive professional use and extended long lifetime

1 Extra oil function

Robust and shock resistant steel flange for fitting the grapple in standard pattern with 6xM16 bolts

G1/2" open/close channels



FORESTRY



AGRICULTURE



CONSTRUCTION



GENERAL CARGO



RECYCLING



FHR 10FD1 ROTATOR

STATIC
LOAD



DYNAMIC
LOAD



TORQUE
at 25MPa



OILFLOW



WEIGHT



**DOUBLE
BEARING**



**FORGED
STEEL**

Grapple open
G1/2" Max 250 bar
Rotate left/right
G1/2" Max 250 bar

Rotator frame L80 ø35

Grapple close
G1/2" Max 300 bar

Rotator designed for intensive professional use and extended long lifetime

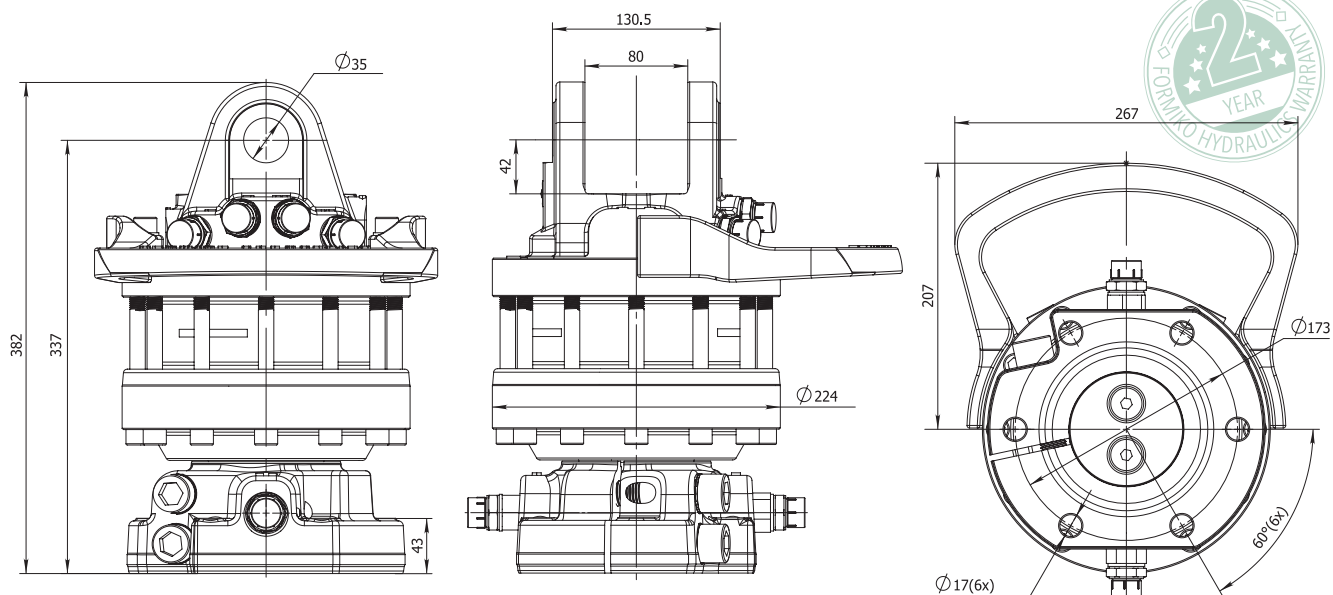
Rotator with two bearings to withstand compression and stretching forces

Grapple open
G1/2"

Grapple close
G1/2"

Robust and shock resistant steel flange for fitting the grapple in standard pattern with 6xM16 bolts

Optional open/close channels



FORESTRY



AGRICULTURE



CONSTRUCTION



GENERAL CARGO



RECYCLING

STATIC
LOAD



100 kN

DYNAMIC
LOAD



50 kN

TORQUE
at 25MPa



2800 Nm

OILFLOW



30 l/min

WEIGHT



66 kg



DOUBLE
BEARING



FORGED
STEEL

Rotator frame L80 ø35

Grapple open

G1/2" Max 250 bar

Grapple close

G1/2" Max 300 bar

Steel 2 point
fitting system
hose guard

Rotator
designed
for intensive
professional use
and extended
long lifetime

Rotate left/right
G1/2" Max 250 bar

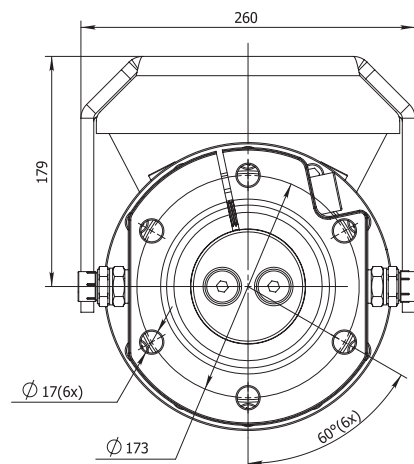
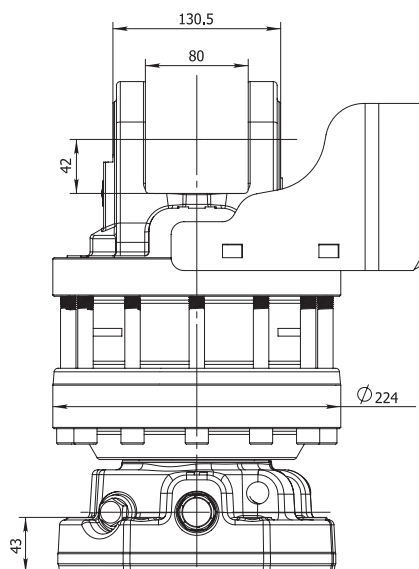
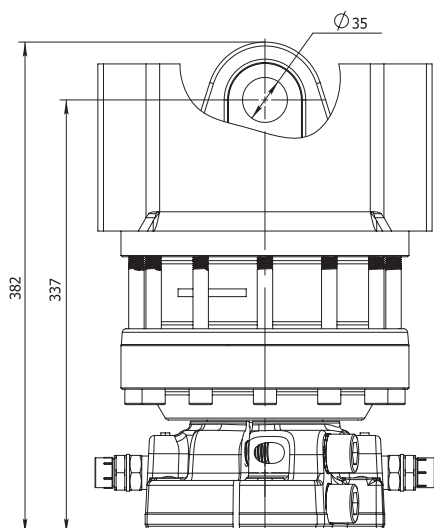
Rotator with two
bearings to withstand
compression and
stretching forces

Grapple open
G1/2"

Grapple close
G1/2"

Optional open/close channels

Robust and shock
resistant steel
flange for fitting
the grapple in
standard pattern
with 6xM16 bolts



FORESTRY



AGRICULTURE



CONSTRUCTION



GENERAL CARGO



RECYCLING



FHR 10FD2 ROTATOR

STATIC
LOAD

100 kN

DYNAMIC
LOAD

50 kN

TORQUE
at 25MPa

2800 Nm

OILFLOW

30 l/min

WEIGHT

64 kg



OPPOSITE HOSE
CONNECTION



DOUBLE
BEARING



FORGED
STEEL

Grapple open
G1/2"
Max 250 bar

Grapple close
G1/2"
Max 300 bar

Rotator designed
for intensive
professional use
and extended
long lifetime

Grapple close
G1/2"

Optional open/close channels

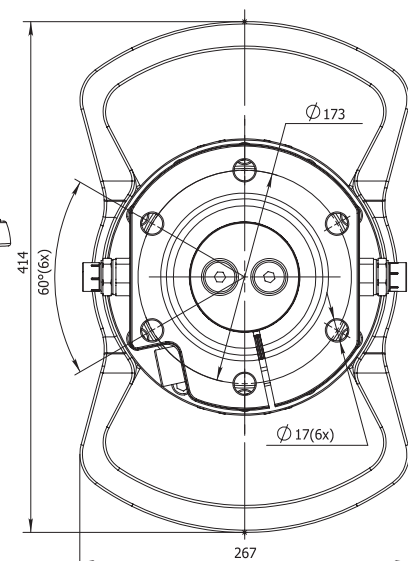
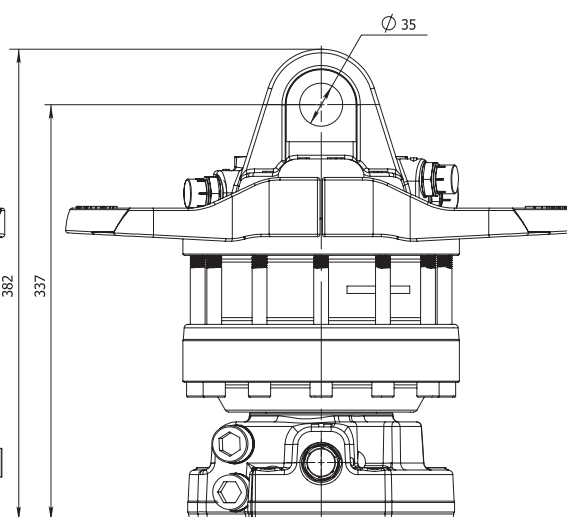
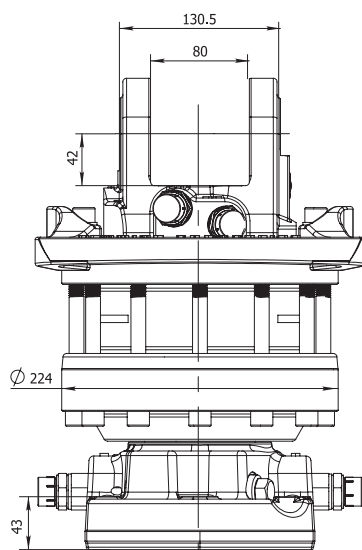
Robust and shock resistant
steel flange for fitting the
grapple in standard pattern
with 6xM16 bolts

Rotator frame L80 ø35

Rotate left/right
G1/2" Max 250 bar

Rotator with
two bearings
to withstand
compression
and stretching
forces

Grapple open
G1/2"



FORESTRY



AGRICULTURE



CONSTRUCTION



GENERAL CARGO



RECYCLING

ROTATOR FHR 16FD1

STATIC
LOAD



DYNAMIC
LOAD



TORQUE
at 25MPa



OILFLOW



WEIGHT



**DOUBLE
BEARING**

**FORGED
STEEL**

Grapple open
G1/2" Max 300 bar
Rotate left/right
G1/2"
Max 250 bar

Rotator with two bearings to withstand compression and stretching forces

Grapple close
G1/2"

Rotator frame L100.5 D45

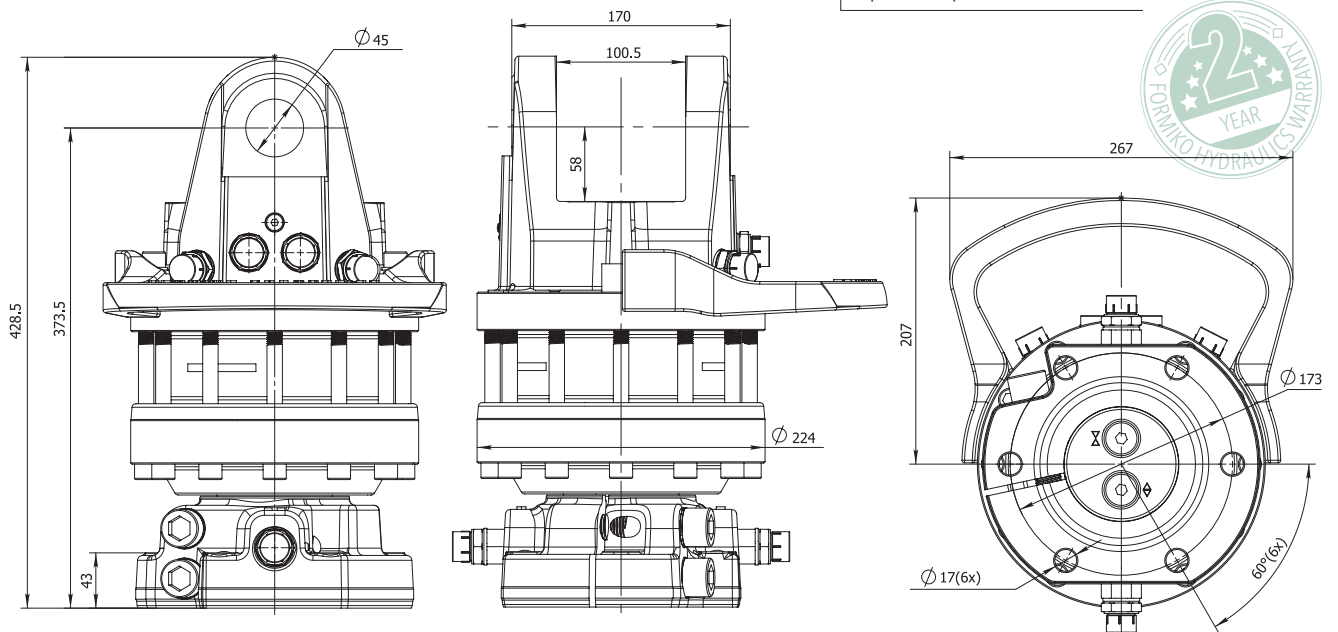
Grapple close
G1/2"
Max 300 bar

Rotator designed for intensive professional use and extended long lifetime

Grapple open
G1/2"

Robust and shock resistant steel flange for fitting the grapple in standard pattern

Optional open/close channels



FORESTRY



AGRICULTURE



CONSTRUCTION



GENERAL CARGO



RECYCLING



FHR 16FD1H ROTATOR

STATIC
LOAD



160 kN

DYNAMIC
LOAD



80 kN

TORQUE
at 25MPa



3400 Nm

OILFLOW



40 l/min

WEIGHT



76 kg



DOUBLE
BEARING



FORGED
STEEL

Rotate left/right
G1/2" Max 250 bar

Rotator with
two bearings
to withstand
compression and
stretching forces

Grapple close
G1/2"

Optional open/close
channels

Rotator frame
L100.5 D45

Grapple open
G1/2" Max 300 bar

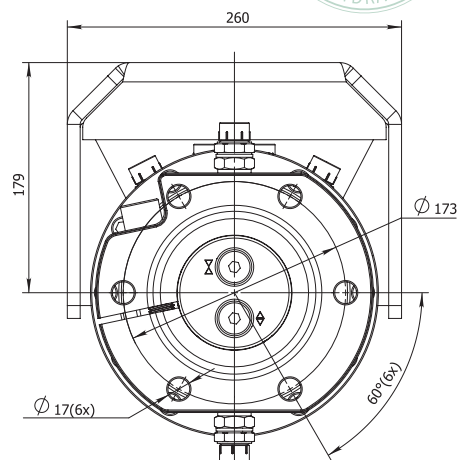
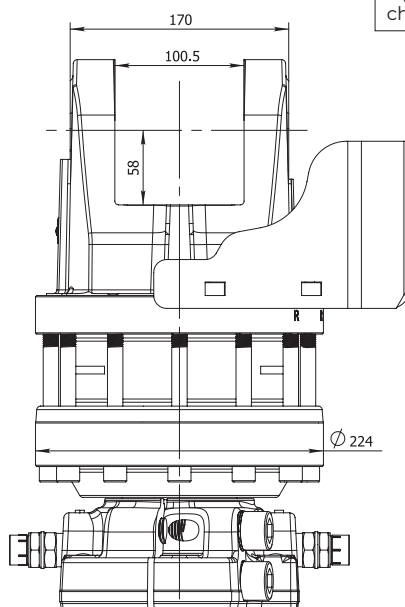
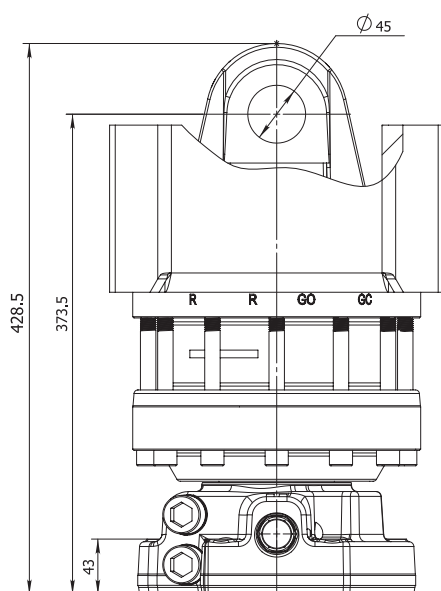
Grapple close
G1/2"
Max 300 bar

Steel 2 point
fitting system
hose guard

Rotator
designed for
intensive
professional use
and extended
long lifetime

Grapple open
G1/2"

Robust and shock
resistant steel
flange for fitting
the grapple in
standard pattern



FORESTRY



AGRICULTURE



CONSTRUCTION



GENERAL CARGO



RECYCLING

STATIC
LOAD



DYNAMIC
LOAD



TORQUE
at 25MPa



OILFLOW



WEIGHT



DOUBLE
BEARING

Grapple open
G1/2" Max 300 bar
Rotate left/right
G1/2" Max 250 bar

Rotator with two
bearings to withstand
compression and
stretching forces

Grapple close
G1/2"

Rotator frame
L100.5 D45

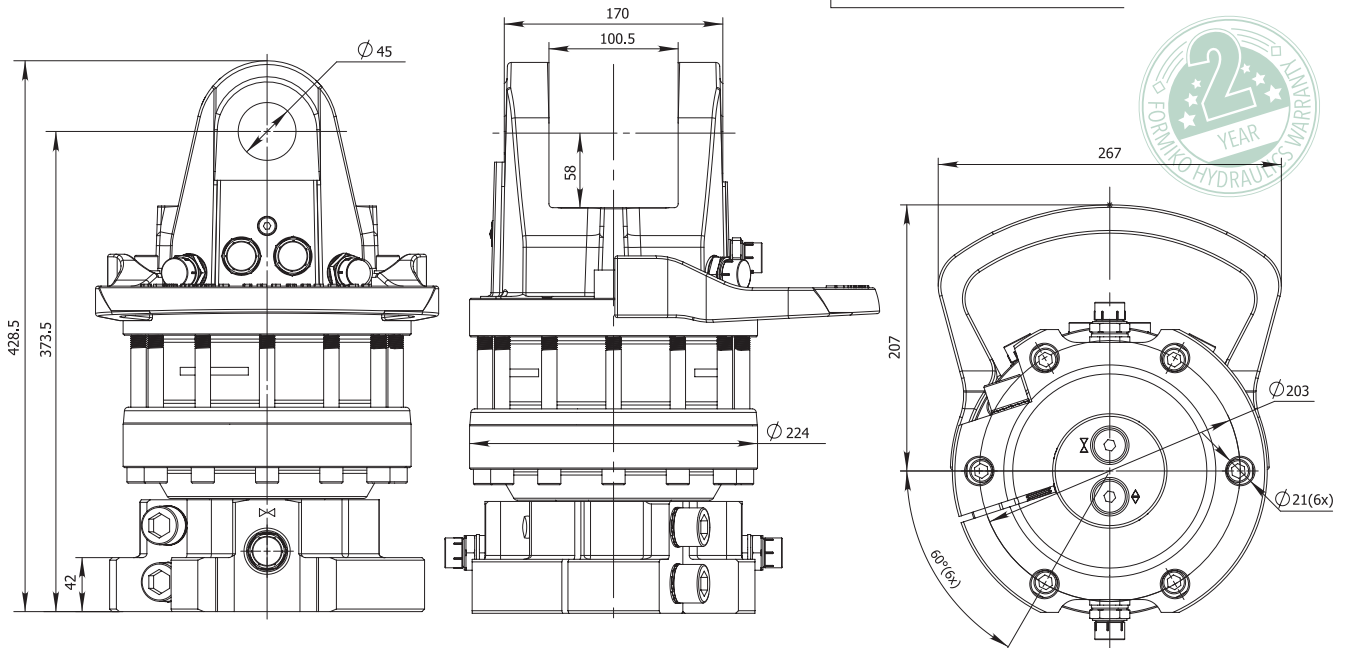
Grapple close
G1/2"
Max 300 bar

Rotator
designed for
intensive
professional use
and extended
long lifetime

Grapple open
G1/2"

Robust and
shock resistant
steel flange
for fitting the
grapple in
standard pattern

Optional open/close channels



FORESTRY



AGRICULTURE



CONSTRUCTION



GENERAL CARGO



RECYCLING



FORMIKO
HYDRAULICS

formiko.lv

FHR 16FD1-203H ROTATOR

STATIC
LOAD

160 kN

DYNAMIC
LOAD

80 kN

TORQUE
at 25MPa

3400 Nm

OILFLOW

40 l/min

WEIGHT

80 kg



**DOUBLE
BEARING**

Grapple open

G1/2" Max 300 bar

Rotate left/right

G1/2" Max

250 bar

Rotator frame
L100.5 D45

Grapple close

G1/2"

Max 300 bar

Steel 2 point
fitting system
hose guard

Rotator
designed for
intensive
professional use
and extended
long lifetime

Grapple open

G1/2"

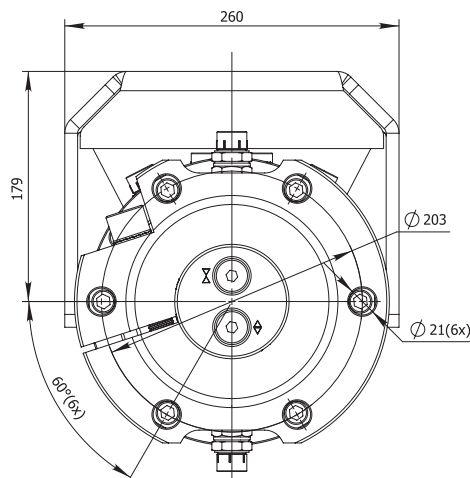
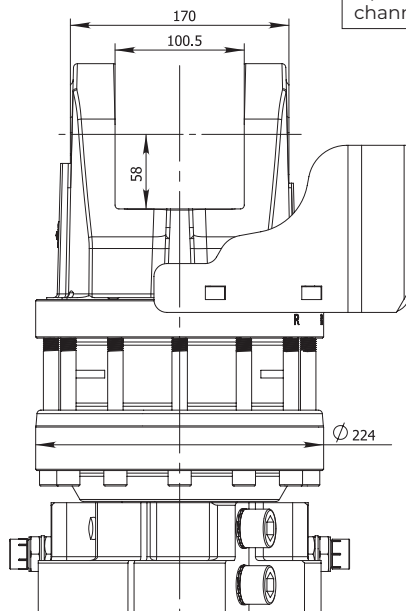
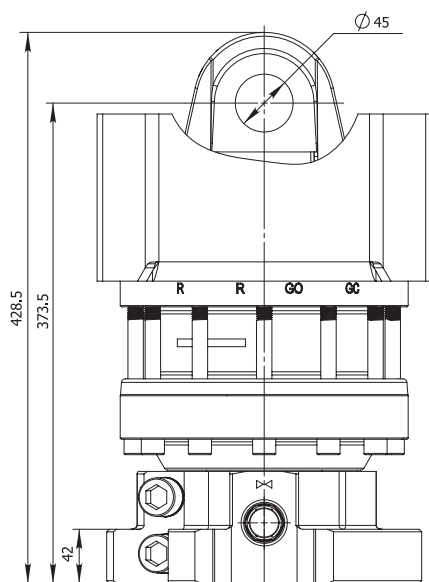
Robust and shock
resistant steel
flange for fitting
the grapple in
standard pattern

Rotator with
two bearings
to withstand
compression and
stretching forces

Grapple close

G1/2"

Optional open/close
channels



FORESTRY



AGRICULTURE



CONSTRUCTION



GENERAL CARGO



RECYCLING

STATIC
LOAD



DYNAMIC
LOAD



TORQUE
at 25MPa



OILFLOW



WEIGHT



**DOUBLE
BEARING**

Grapple open
G1/2" Max 300 bar

Rotate left/right
G1/2" Max
250 bar

Rotator frame
L103.2 D50.8

Grapple close
G1/2" Max 300 bar

Rotator
designed
for intensive
professional use
and extended
long lifetime

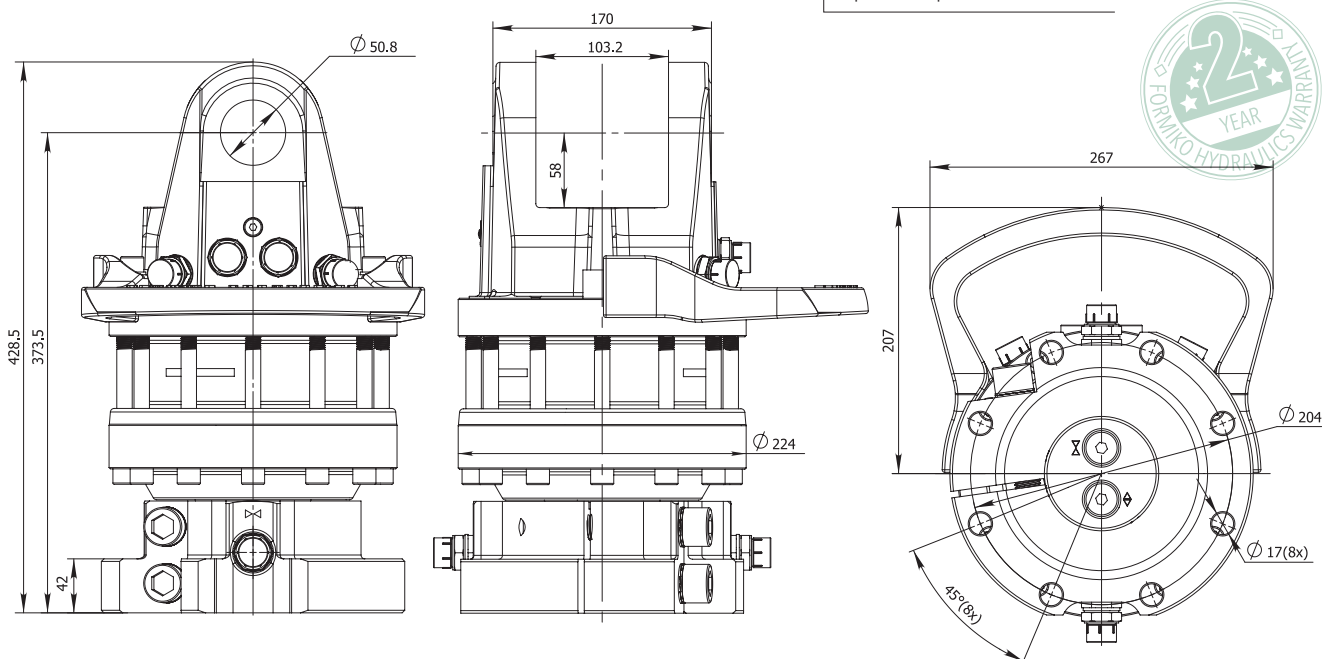
Rotator with two
bearings to withstand
compression and
stretching forces

Grapple open
G1/2"

Robust and shock
resistant steel
flange for fitting
the grapple in
standard pattern

Grapple close
G1/2"

Optional open/close channels



FORESTRY



AGRICULTURE



CONSTRUCTION



GENERAL CARGO



RECYCLING



FHR 16FD1-A8H ROTATOR

STATIC
LOAD



DYNAMIC
LOAD



TORQUE
at 25MPa



OILFLOW



WEIGHT



**DOUBLE
BEARING**

Grapple open

G1/2" Max 300 bar

Rotate left/right

G1/2" Max
250 bar

Rotator frame
L103.2 D50.8

Grapple close

G1/2"
Max 300 bar

Steel 2 point
fitting system
hose guard

Rotator
designed for
intensive
professional use
and extended
long lifetime

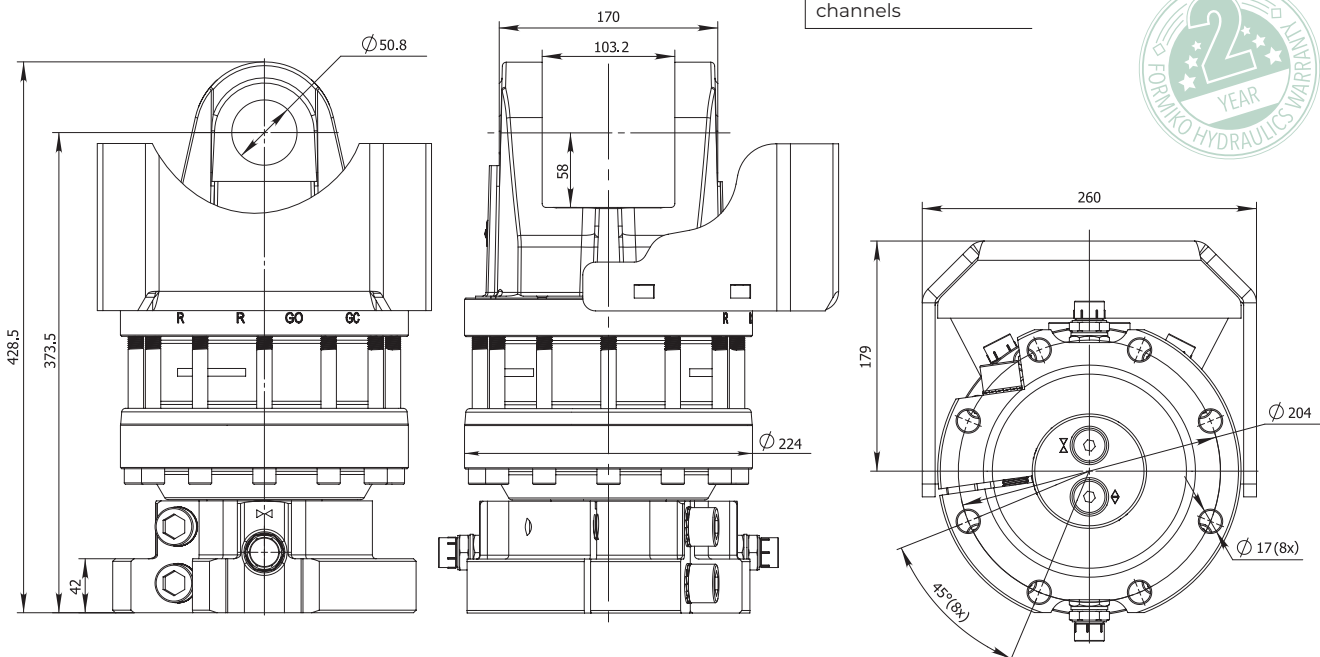
Rotator with
two bearings
to withstand
compression and
stretching forces

Grapple open
G1/2"

Robust and
shock resistant
steel flange
for fitting the
grapple in
standard pattern

Grapple close
G1/2"

Optional open/close
channels



FORESTRY



AGRICULTURE



CONSTRUCTION



GENERAL CARGO



RECYCLING

HARVESTER ROTATOR FHH 16

STATIC
LOAD



DYNAMIC
LOAD



TORQUE
at 25MPa



OILFLOW



WEIGHT



**DOUBLE
BEARING**



**FORGED
STEEL**

Rotator frame
L100.5 D45

**DEVELOPED FOR
HARVESTER
HEADS**

**THREE OPTIONS
TO CONNECT
HOSES:**

- UPPER LINK
- FLANGE FACE
- FLANGE SIDE

Rotate left/right

G1/2" Max
250 bar

Rotator with
increased torque
for heavy duty
applications

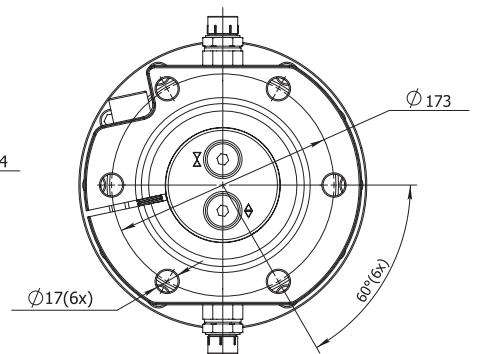
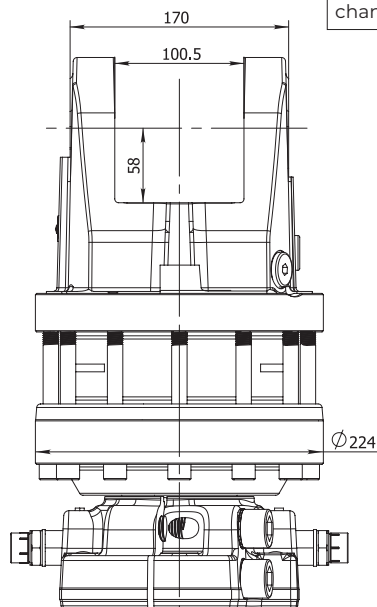
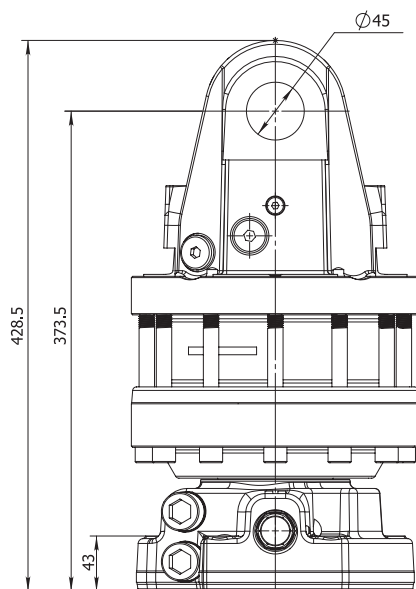
Robust and shock
resistant steel
flange for fitting
the grapple in
standard pattern
with 6xM16 bolts

Rotator with
two bearings
to withstand
compression and
stretching forces

Rotate left/right
G1/2"

Rotate left/right
G1/2"

Rotate left/right
channels



FORESTRY



AGRICULTURE



CONSTRUCTION



GENERAL CARGO



RECYCLING



FHL 01

KNUCKLE JOINT LINK

STATIC
LOAD



55 kN

WEIGHT



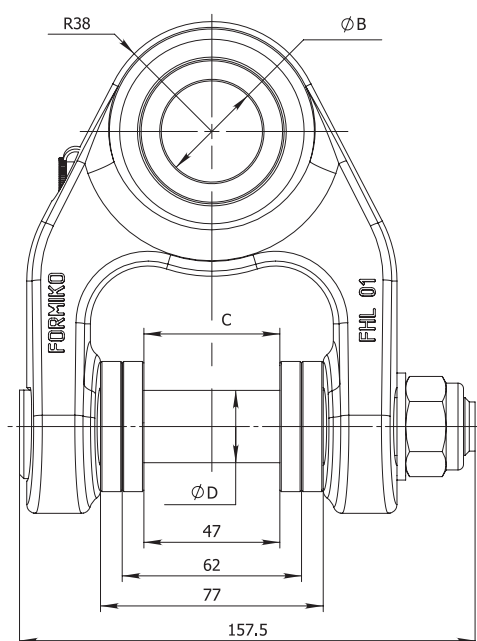
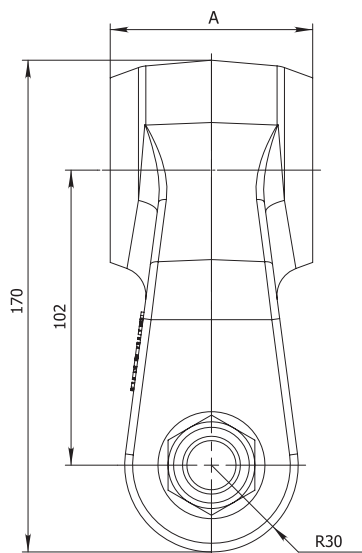
4.5 kg



FORGED
STEEL

FHL01- A /B - C /D

| A | B | C | D |
|----|----|----|----|
| 80 | 45 | 45 | 25 |
| 70 | 40 | 60 | 30 |
| 60 | 35 | 73 | |
| | 30 | | |
| | 25 | | |



The body of FHL01 knuckle joint link is made from shock resistant FORGED STEEL to improve reliability and equipped with bronze bushings to extend lifetime.

Pin locking nut has to be tightened with a torque of 120 Nm

Fill grease through grease nipples until it will appear to the external surfaces.

Greasing must be repeated after every 8 working hours of the link.



FORESTRY



AGRICULTURE



CONSTRUCTION



GENERAL CARGO



RECYCLING

STATIC
LOAD



55 kN

WEIGHT



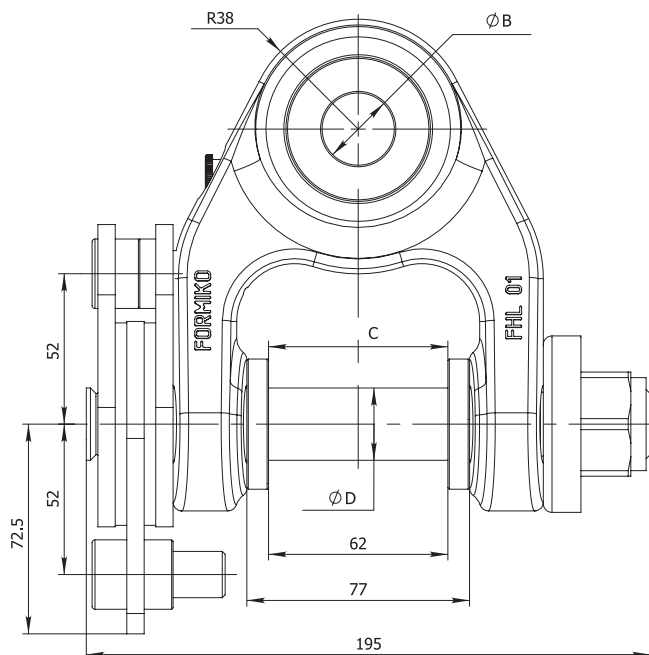
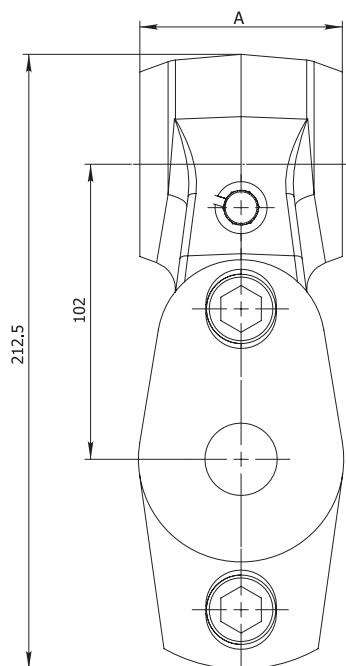
6 kg



FORGED
STEEL

FHL01B- A/B-C/D

| A | B | C | D |
|----|----|----|----|
| 80 | 45 | 60 | 30 |
| 70 | 40 | 73 | 25 |
| 60 | 35 | | |
| | 30 | | |
| | 25 | | |



The body of FHL01B knuckle joint link is made from shock resistant FORGED STEEL to improve reliability and equipped with bronze bushings to extend lifetime.

Pin locking nut has to be tightened with a torque of 60-160 Nm dependent on desired brake power.

Fill grease through grease nipples until it will appear to the external surfaces.

Greasing must be repeated after every 8 working hours of the link.

FORESTRY



AGRICULTURE



CONSTRUCTION



GENERAL CARGO



RECYCLING



FORMIKO
HYDRAULICS

formiko.lv

FHL 04-25

KNUCKLE JOINT LINK

STATIC
LOAD



55 kN

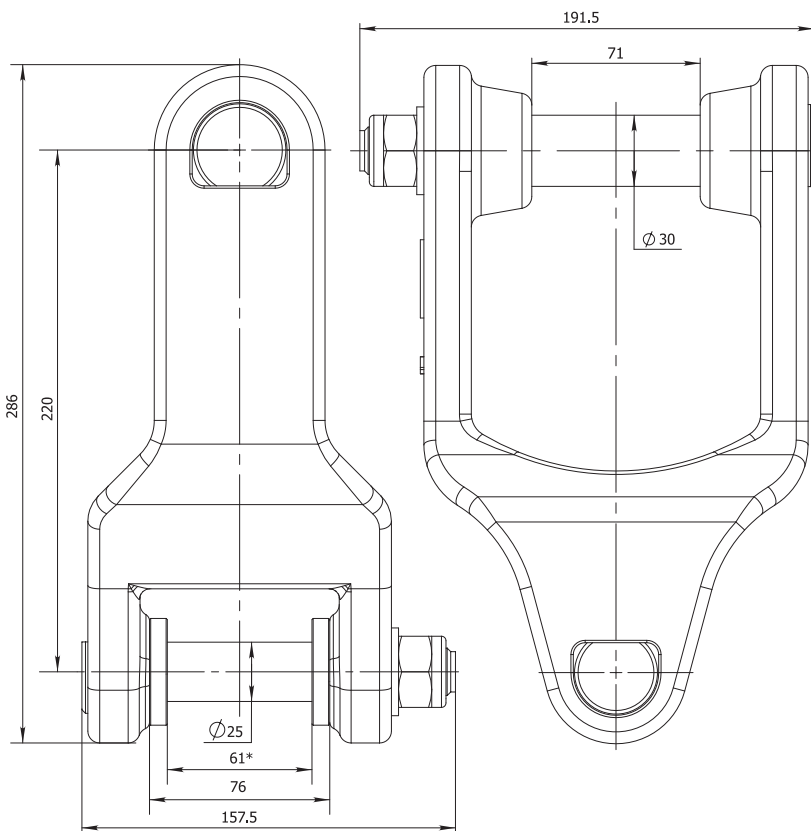
WEIGHT



11.67 kg



FORGED
STEEL



***ORDERING EXAMPLE
FOR ROTATOR WITH 60MM
INTERFACE:**

Link FHL 04-25 - 1 x

Distancers FHL 01.007-2 - 2x

Pin locking nut has to be tightened
with a torque of 120 Nm.



FORESTRY



AGRICULTURE



CONSTRUCTION



GENERAL CARGO



RECYCLING

STATIC
LOAD



55 kN

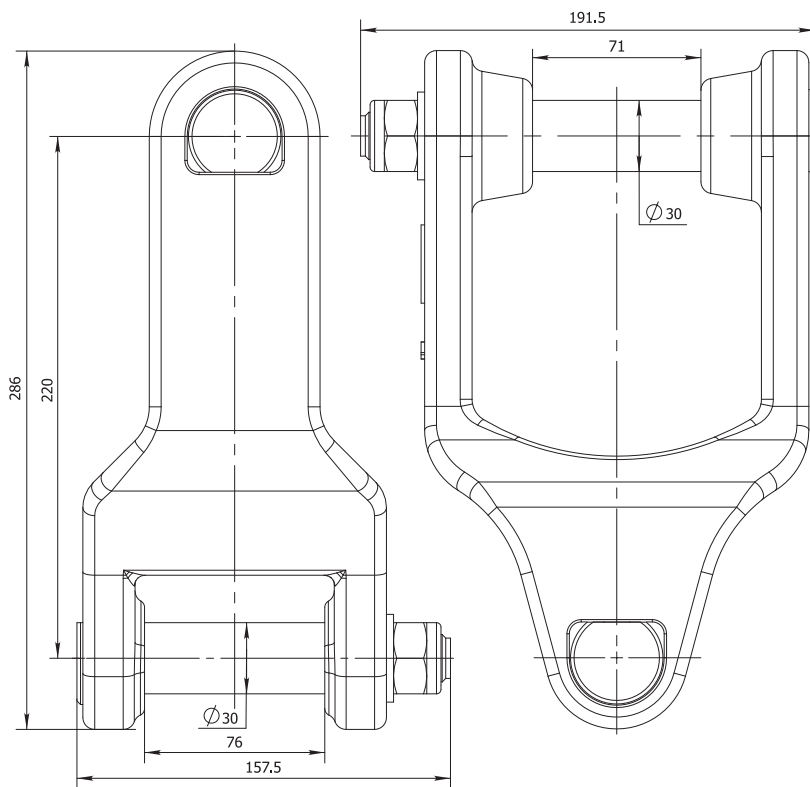
WEIGHT



11.68 kg



FORGED
STEEL



Pin locking nut has to be tightened with a torque of 120 Nm.

FORESTRY



AGRICULTURE



CONSTRUCTION



GENERAL CARGO



RECYCLING



FHL 04B-25

KNUCKLE JOINT LINK

STATIC
LOAD



55 kN

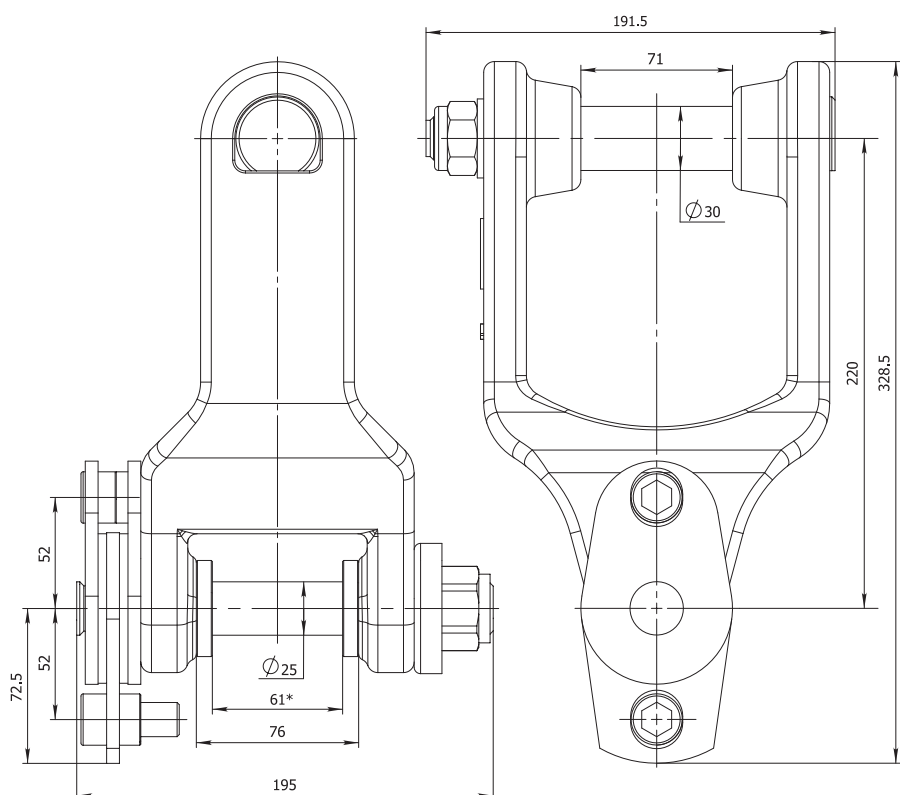
WEIGHT



12.67 kg



FORGED
STEEL



***ORDERING EXAMPLE
FOR ROTATOR WITH 60MM
INTERFACE:**

Link 04B-25 - 1 x

Distancers FHL 01.007-2 - 2x

Upper pin locking nut has to be tightened with a torque of 120 Nm.

Lower pin locking nut has to be tightened with a torque of 60–160 Nm dependent on desired brake power.



FORESTRY



AGRICULTURE



CONSTRUCTION



GENERAL CARGO



RECYCLING

KNUCKLE JOINT LINK

FHL 04B-30

STATIC
LOAD



55 kN

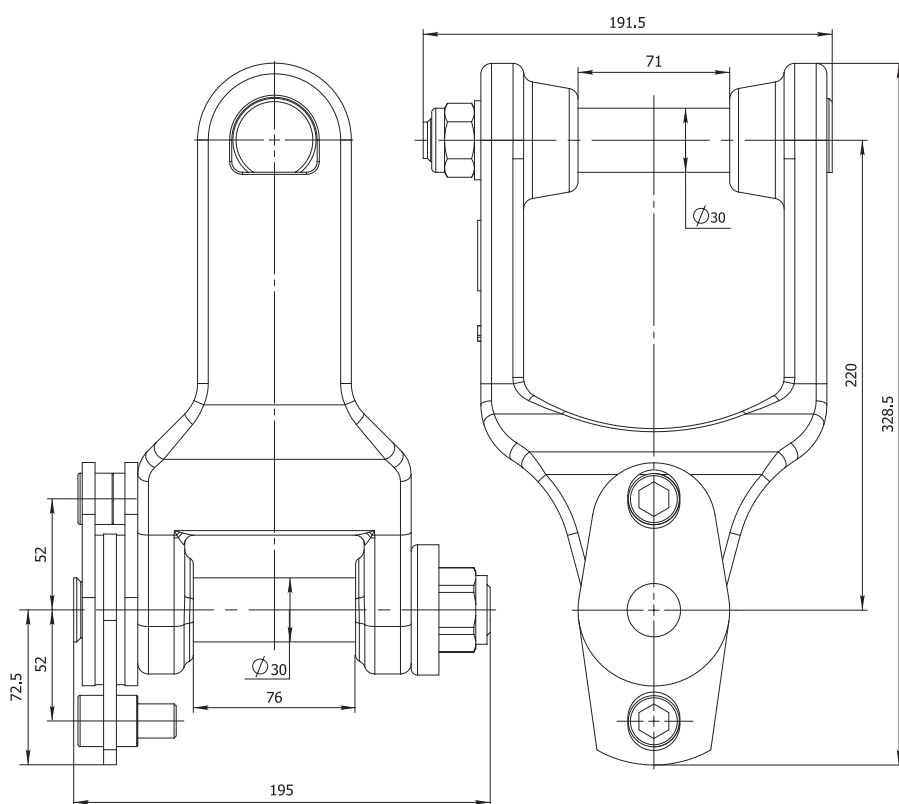
WEIGHT



12.68 kg



FORGED
STEEL



Upper pin locking nut has to be tightened with a torque of 120 Nm.

Lower pin locking nut has to be tightened with a torque of 60–160 Nm dependent on desired brake power.

FORESTRY



AGRICULTURE



CONSTRUCTION



GENERAL CARGO



RECYCLING



FHL 05

KNUCKLE JOINT LINK

STATIC
LOAD



55 kN

WEIGHT



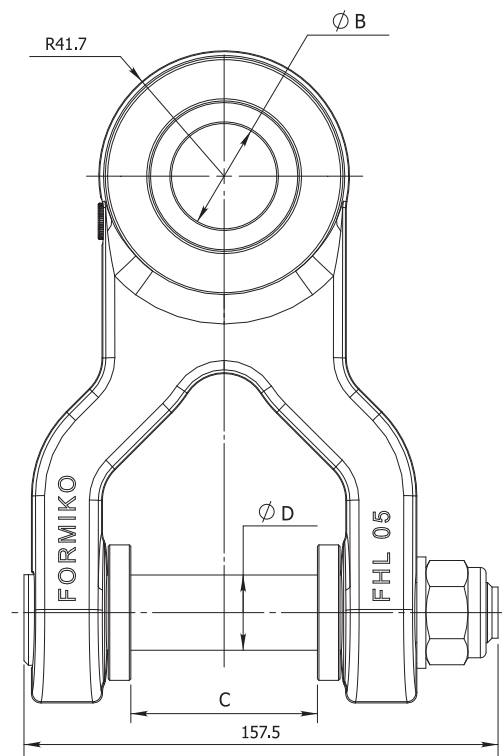
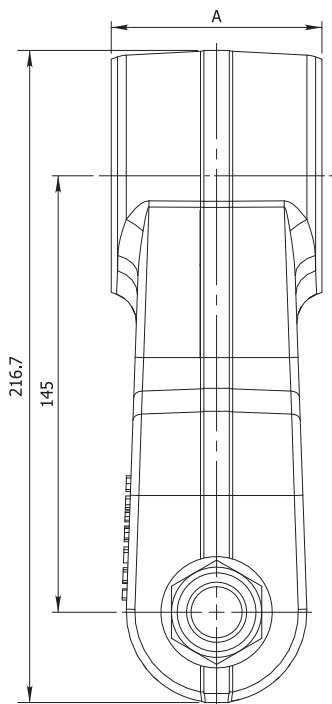
6 kg



FORGED
STEEL



| A | B | C | D |
|----|----|----|----|
| 80 | 45 | 73 | 30 |
| 70 | 40 | 60 | 25 |
| 60 | 35 | | |
| | 30 | | |
| | 25 | | |



ORDERING EXAMPLE:

FHL 05-AB-CD

(FHL 05-7030-6025)

Pin locking nut has to be tightened with a torque of 120 Nm

Fill grease through grease nipples until it will appear to the external surfaces.

Greasing must be repeated after every 8 working hours of the link.



FORESTRY



AGRICULTURE



CONSTRUCTION



GENERAL CARGO



RECYCLING

STATIC
LOAD



55 kN

WEIGHT



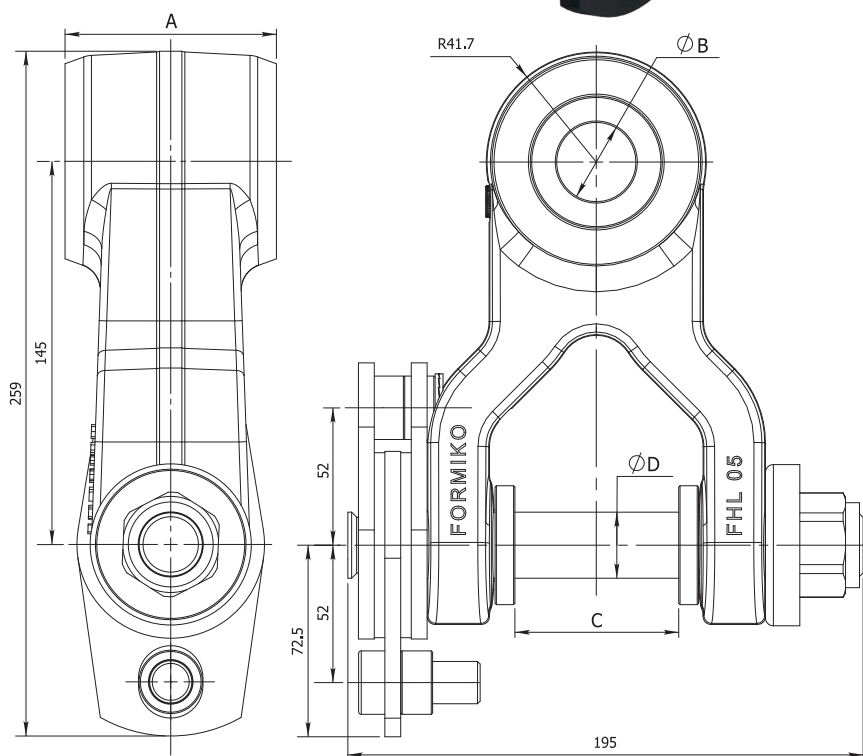
7 kg



FORGED
STEEL



| A | B | C | D |
|----|----|----|----|
| 80 | 45 | 73 | 30 |
| 70 | 40 | 60 | 25 |
| 60 | 35 | | |
| | 30 | | |
| | 25 | | |



ORDERING EXAMPLE:

FHL 05-AB-CD

(FHL 05-7030-6025)

Pin locking nut has to be tightened with a torque of 60–160 Nm dependent on desired brake power.

Fill grease through grease nipples until it will appear to the external surfaces.

Greasing must be repeated after every 8 working hours of the link.

FORESTRY



AGRICULTURE



CONSTRUCTION



GENERAL CARGO



RECYCLING



FORMIKO
HYDRAULICS

formiko.lv

FHL 02

KNUCKLE JOINT LINK

STATIC
LOAD



100 kN

WEIGHT



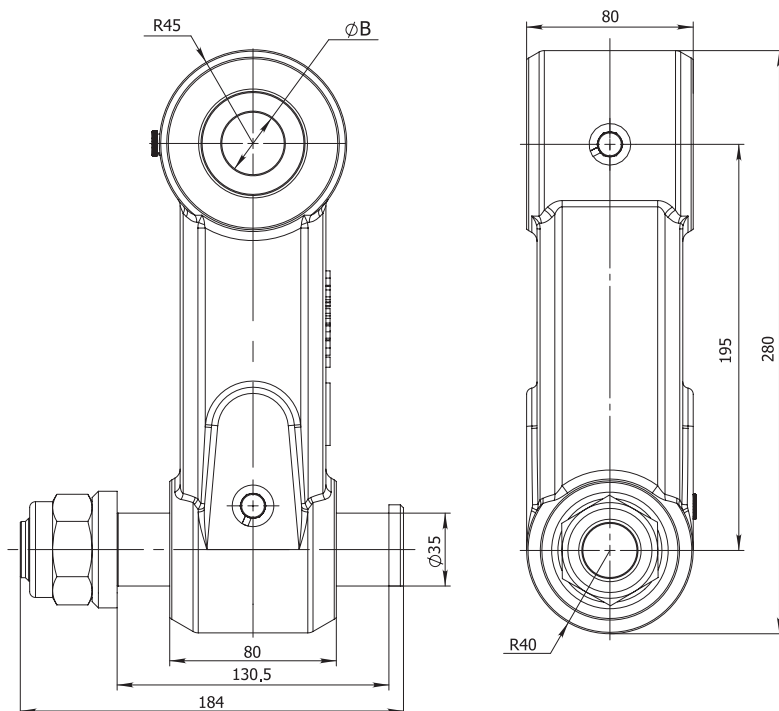
11 kg



FORGED
STEEL



| LINK NAME | B | WEIGHT |
|-----------|----|--------|
| FHL 02-45 | 45 | 11.12 |
| FHL 02-40 | 40 | 11.29 |
| FHL 02-35 | 35 | 11.43 |
| FHL 02-30 | 30 | 11.55 |



The body of FHL02 knuckle joint link is made from shock resistant FORGED STEEL to improve reliability and equipped with bronze bushings to extend lifetime.

Pin locking nut has to be tightened with a torque of 120 Nm

Fill grease through grease nipples until it will appear to the external surfaces.

Greasing must be repeated after every 8 working hours of the link.



FORESTRY



AGRICULTURE



CONSTRUCTION



GENERAL CARGO



RECYCLING

KNUCKLE JOINT LINK **FHL 02B**

STATIC
LOAD

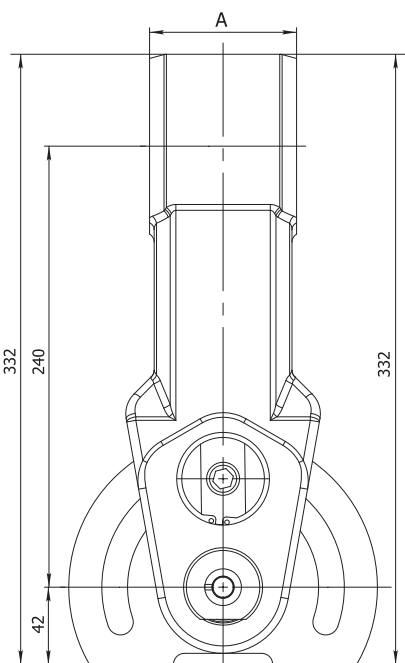
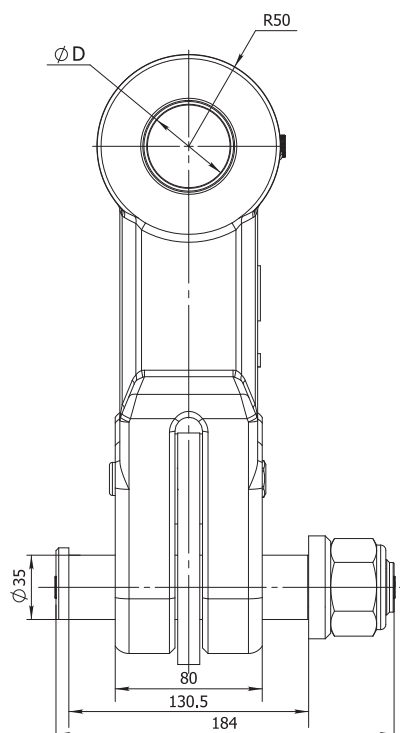


WEIGHT



FORGED
STEEL

| LINK NAME | D | A | WEIGHT |
|----------------|----|-----|--------|
| FHL 02-45 | 45 | 80 | 14.57 |
| FHL 02-40 | 40 | 80 | 14.87 |
| FHL 02-35 | 35 | 80 | 15.01 |
| FHL 02-30 | 30 | 80 | 15.13 |
| FHL 02B-100-45 | 45 | 100 | 15.58 |



Pin locking nut has to be tightened with a torque of 120 Nm.

Fill grease through grease nipples until it will appear to the external surfaces.

Greasing must be repeated after every 8 working hours of the link.

FORESTRY



AGRICULTURE



CONSTRUCTION



GENERAL CARGO



RECYCLING



KNUCKLE JOINT LINK **FHL 03**

STATIC
LOAD



160 kN

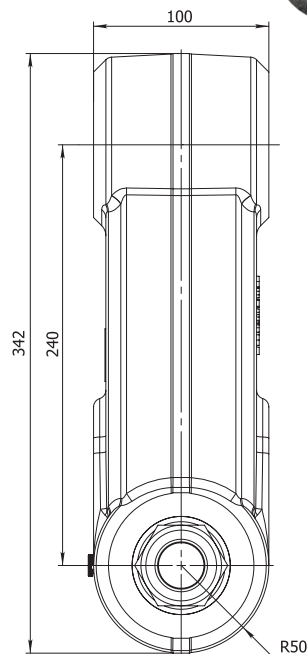
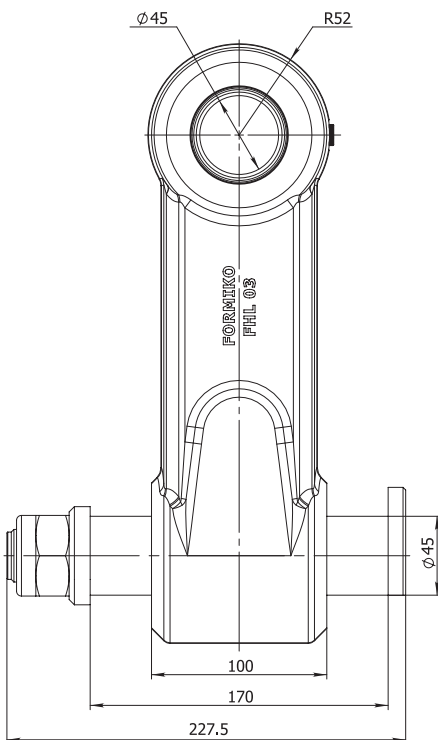
WEIGHT



22 kg



**FORGED
STEEL**



The body of FHL03 knuckle joint link is made from shock resistant **FORGED STEEL** to improve reliability and equipped with steel bushings to extend lifetime.

Pin locking nut has to be tightened with a torque of 120 Nm

Fill grease through grease nipples until it will appear to the external surfaces.

Greasing must be repeated after every 8 working hours of the link.



FORESTRY



AGRICULTURE



CONSTRUCTION



GENERAL CARGO



RECYCLING